

Diciembre  
2023



# Boletín Climatológico

Seguimiento Mensual  
de la Precipitación

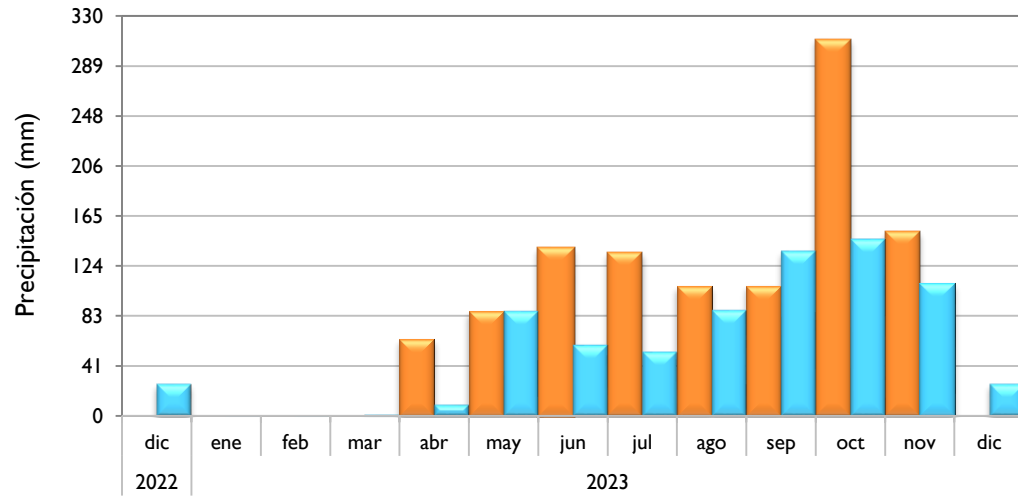
 Estaciones de  
Seguimiento

Observado 2022

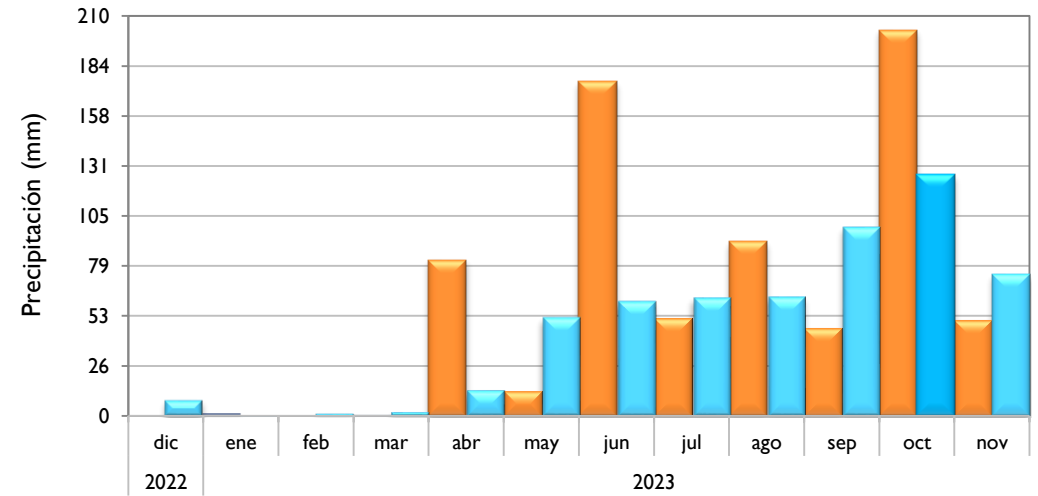
Observado 2023

Climatología

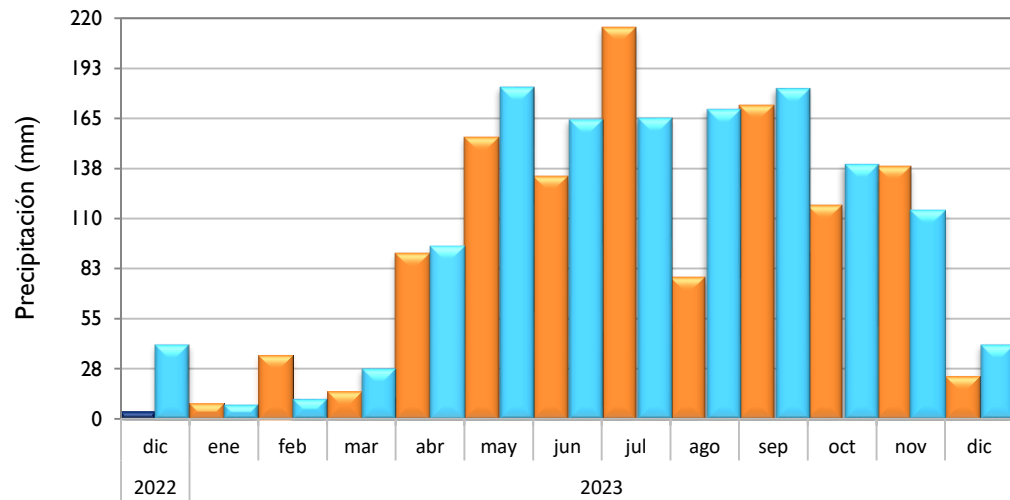
### Puerto Colombia - Atlántico



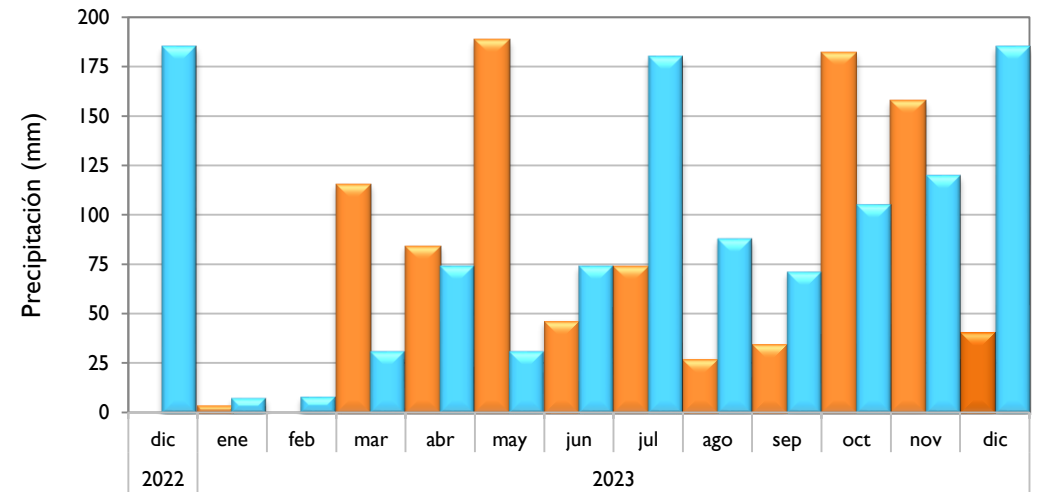
### Santa Marta - Magdalena



### Montería - Córdoba



### Valledupar - Cesar



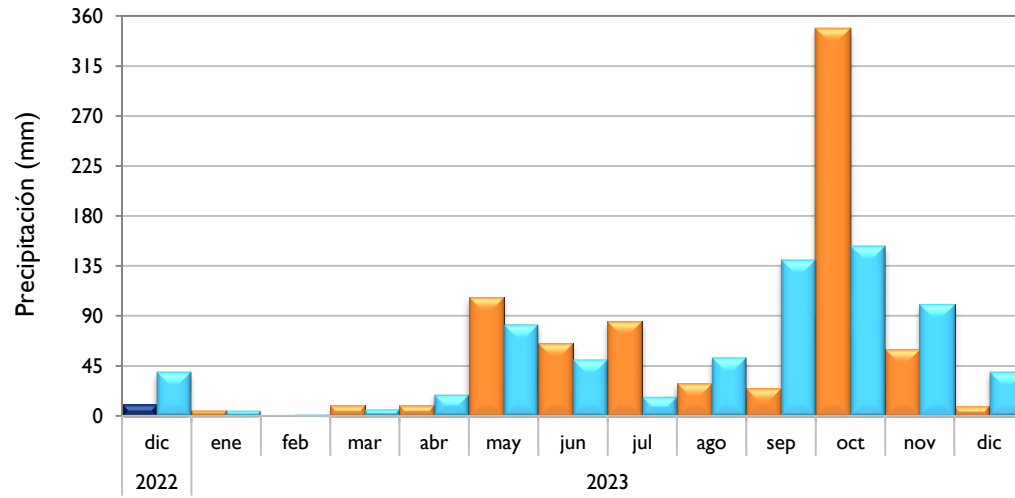
Climatología 1991 - 2020

Observado 2022

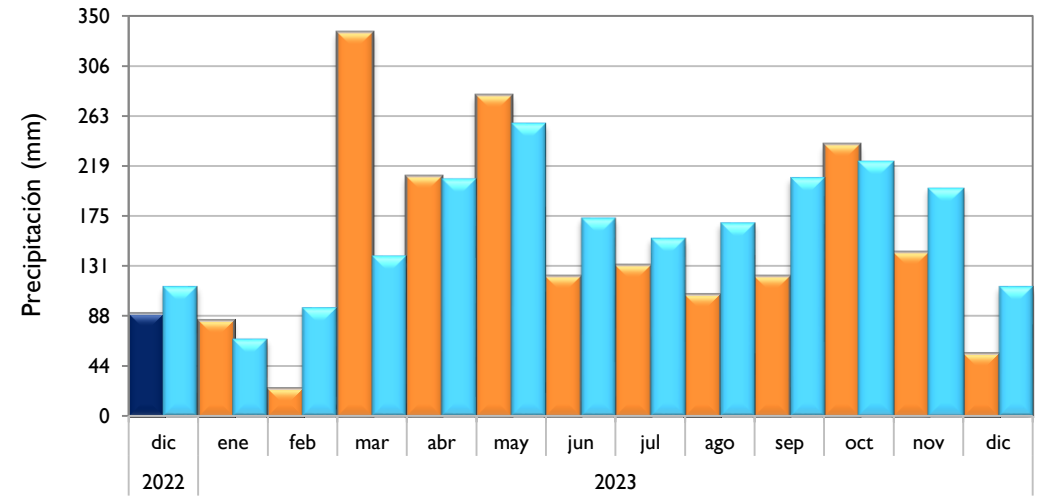
Observado 2023

Climatología

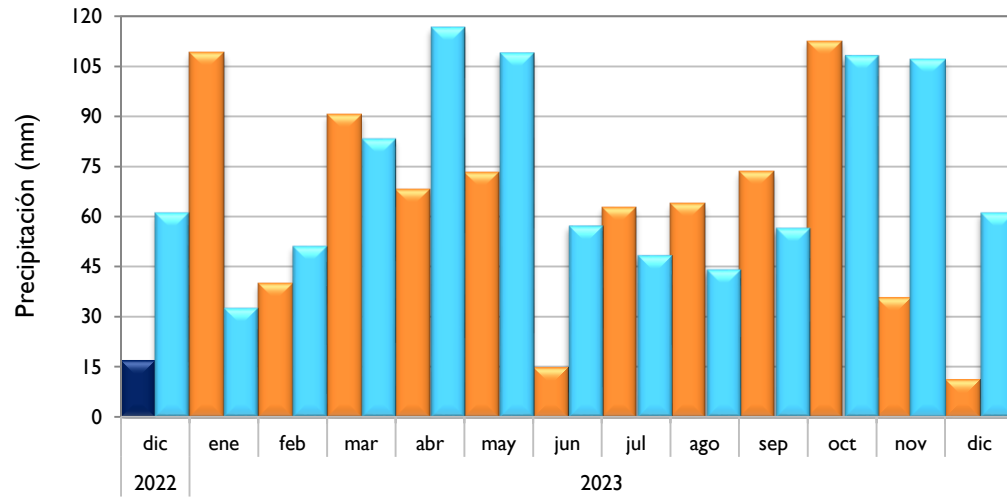
### Riohacha - La Guajira



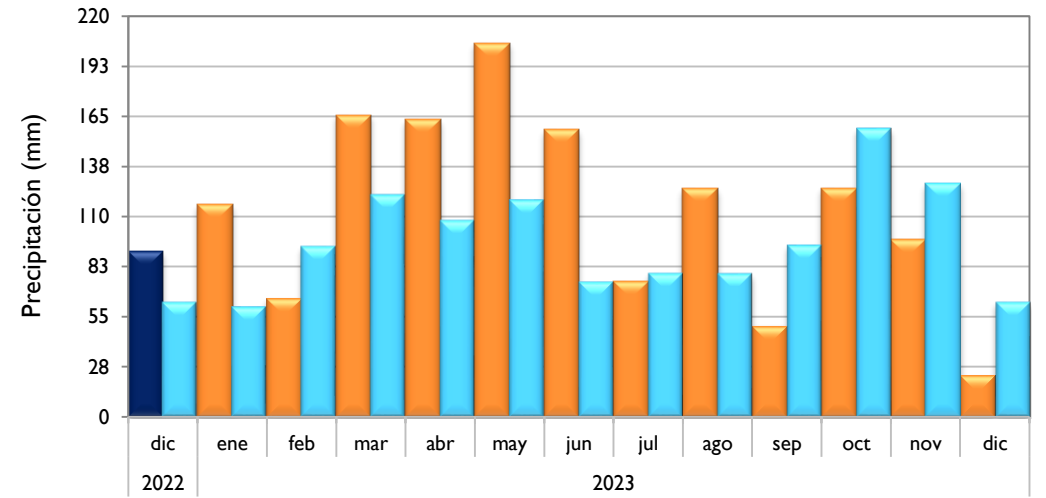
### Rionegro - Antioquia



### Aeropuerto El Dorado - Bogotá D. C.



### Lebrija - Santander

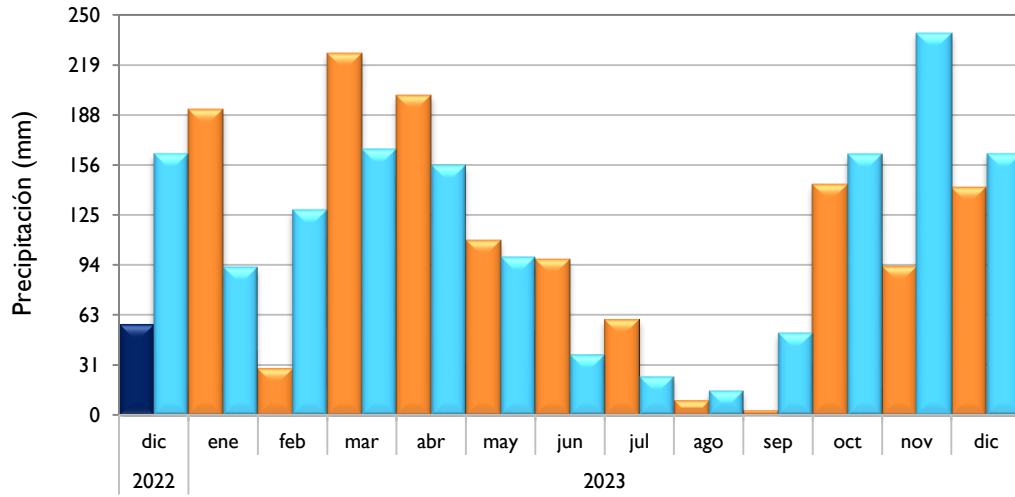


■ Observado 2022

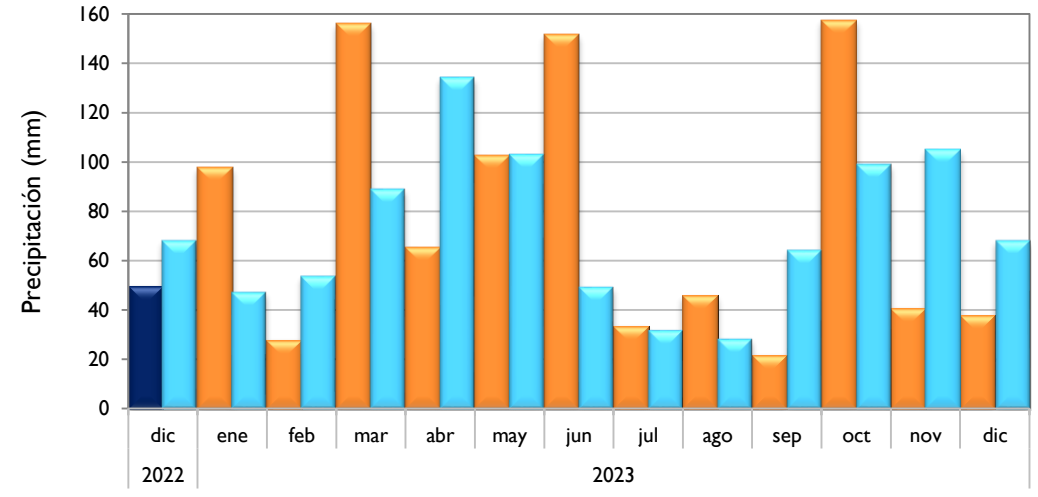
■ Observado 2023

■ Climatología

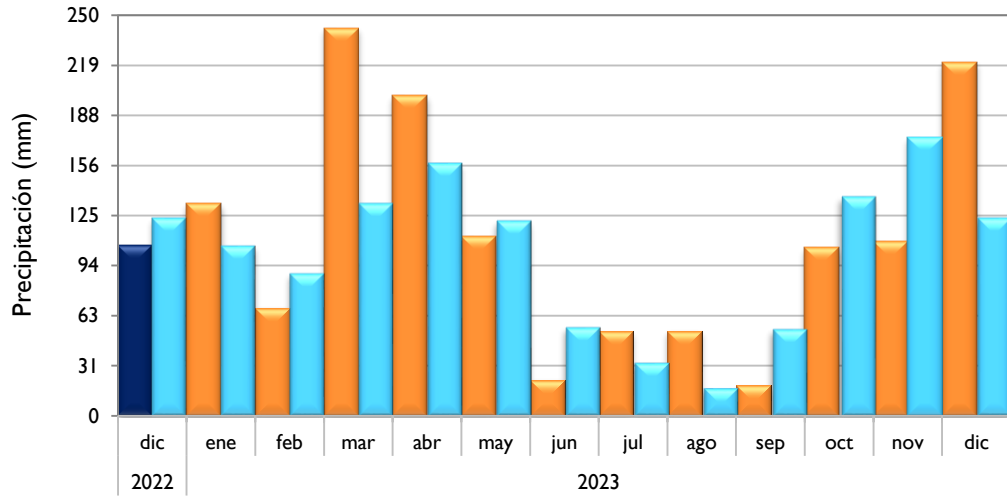
### Neiva - Huila



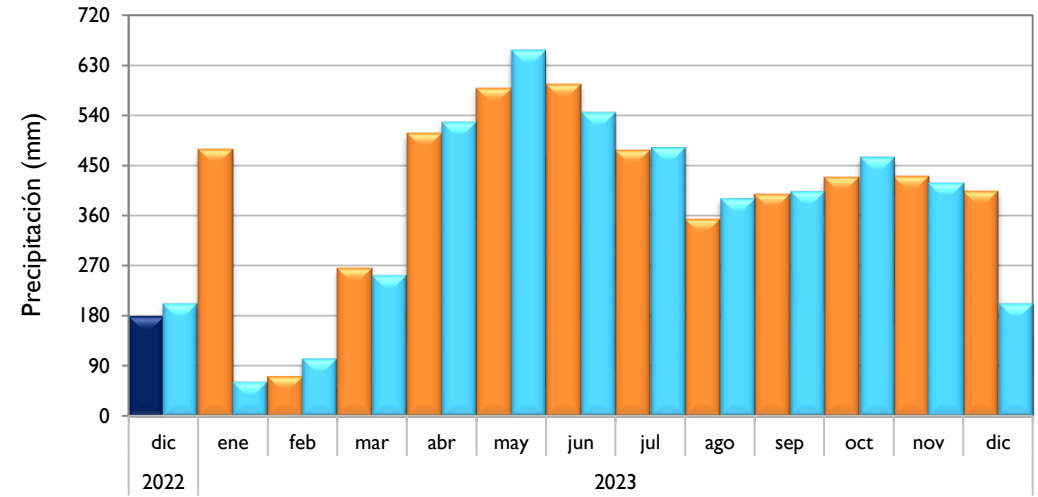
### Palmira - Valle del Cauca



### Chachagüi - Nariño



### Villavicencio - Meta

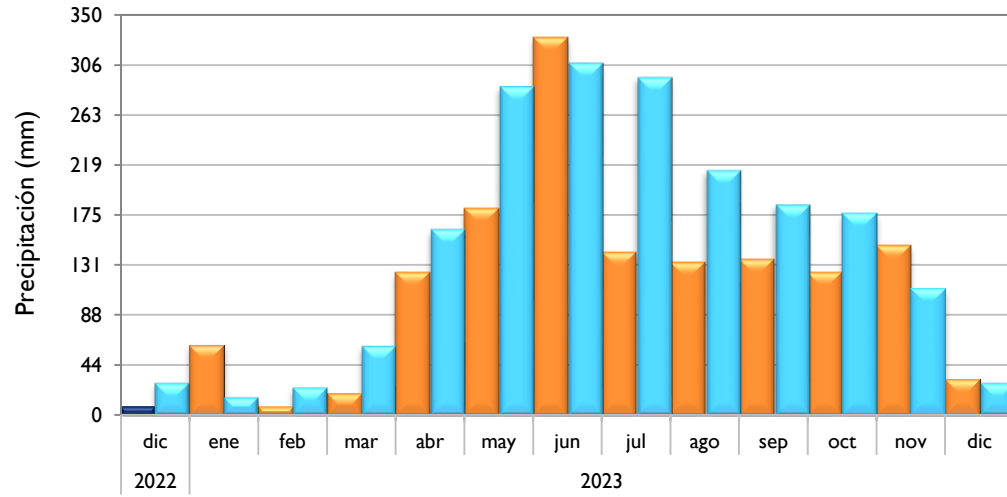


■ Observado 2022

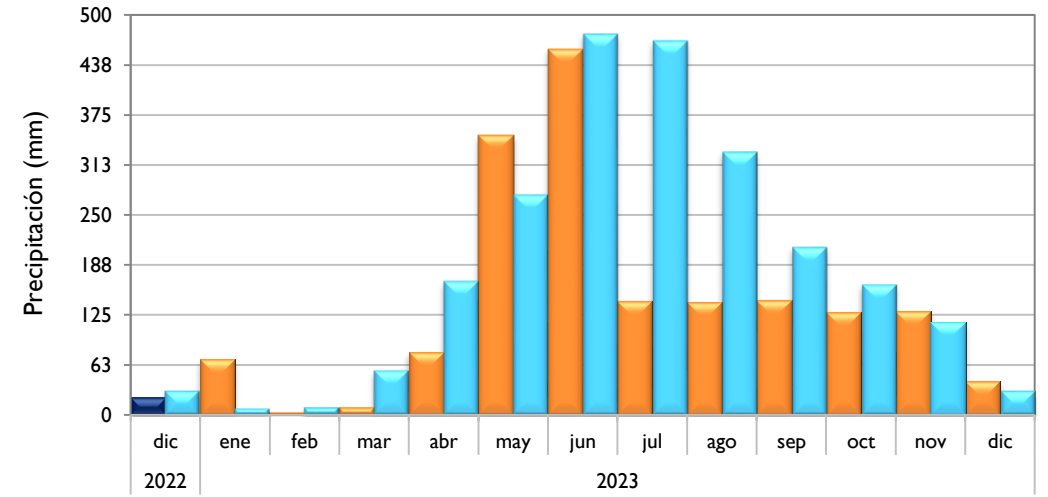
■ Observado 2023

■ Climatología

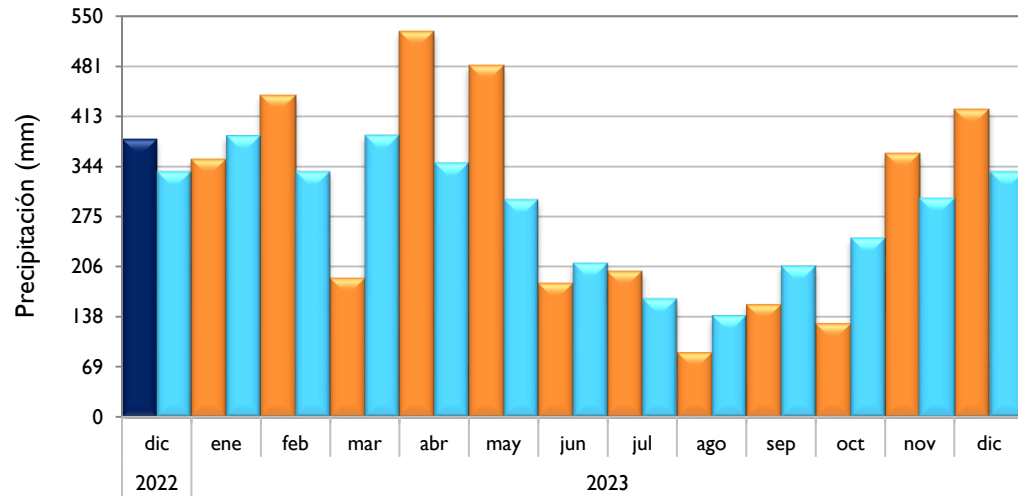
### Arauca - Arauca



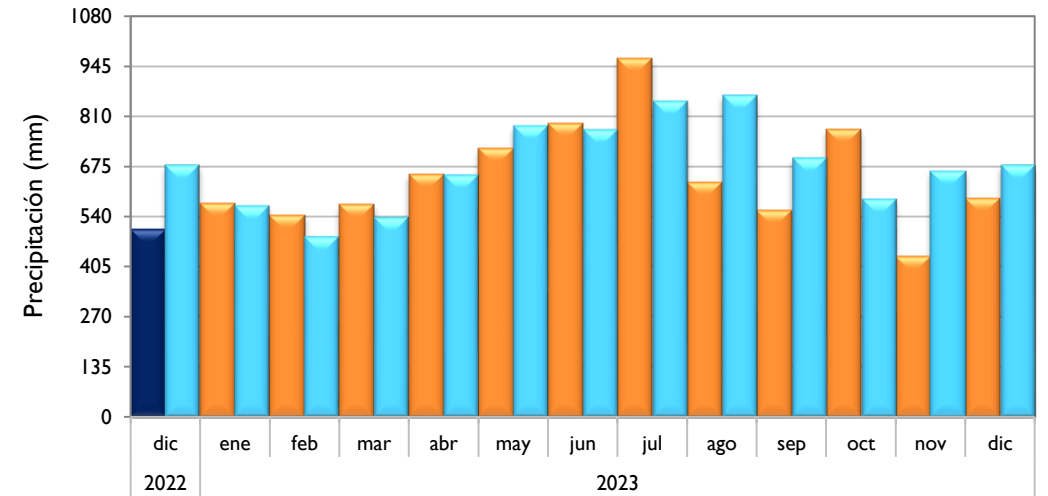
### Puerto Carreño - Vichada



### Leticia - Amazonas



### Quibdó - Chocó

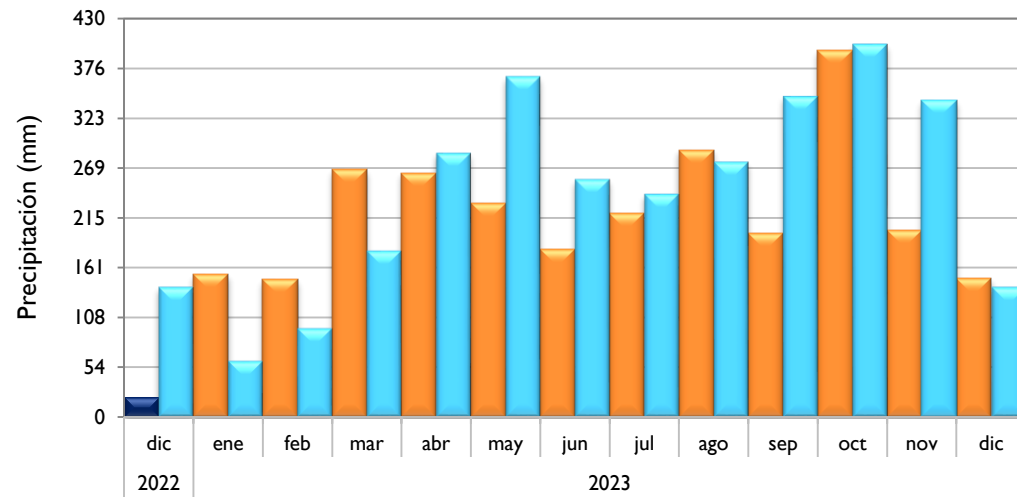


Observado 2022

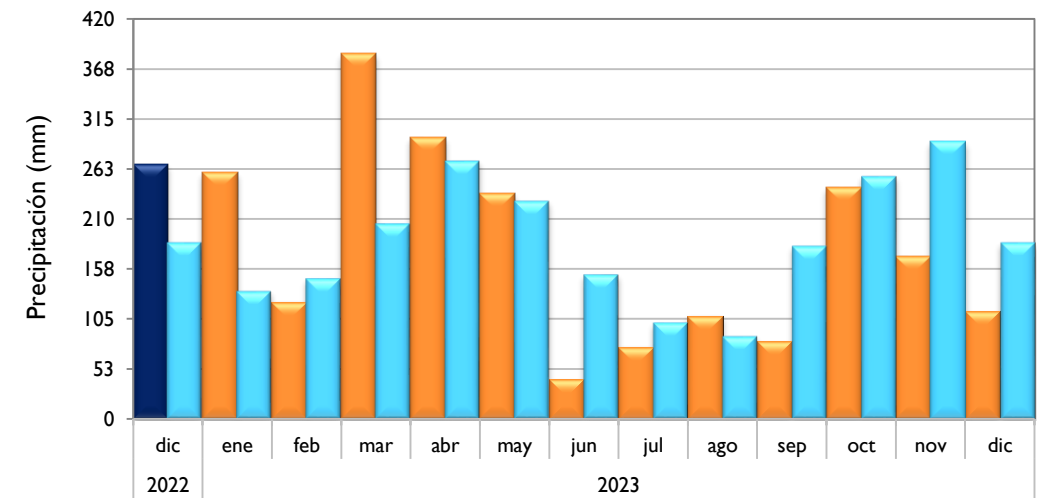
Observado 2023

Climatología

### Barrancabermeja - Santander



### Armenia - Quindío



Elaborado por: Andrea E. Watson Murcia  
Técnico Operativo  
Grupo de Climatología y Agrometeorología  
Subdirección de Meteorología