

Enero  
2021



# Boletín Climatológico

Comportamiento Mensual  
del Número de Días con Lluvia

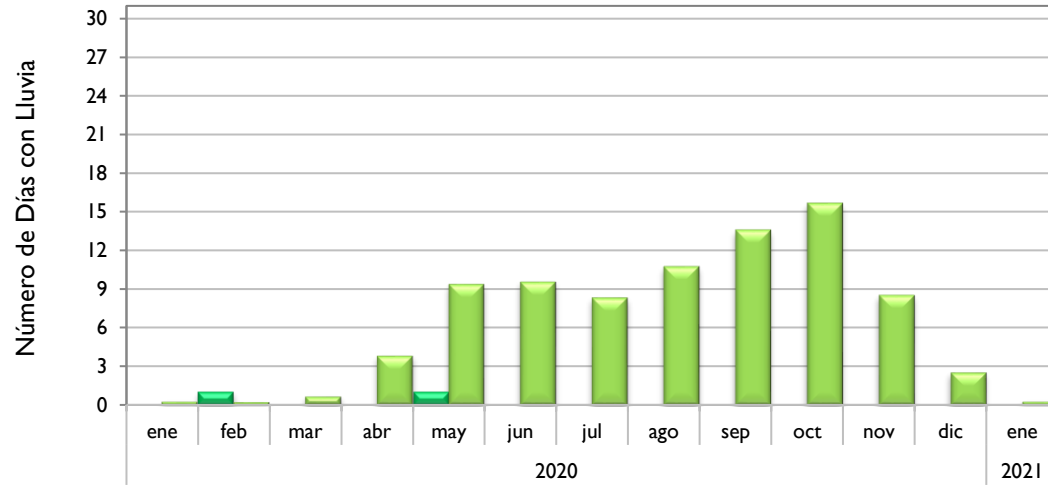
●  
Estaciones de  
Seguimiento

Observado 2020

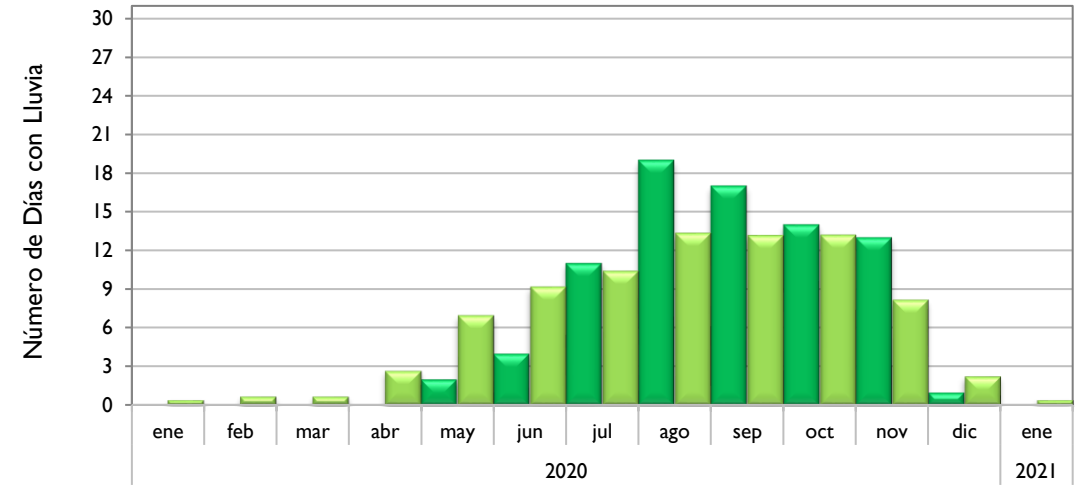
Observado 2021

Climatología

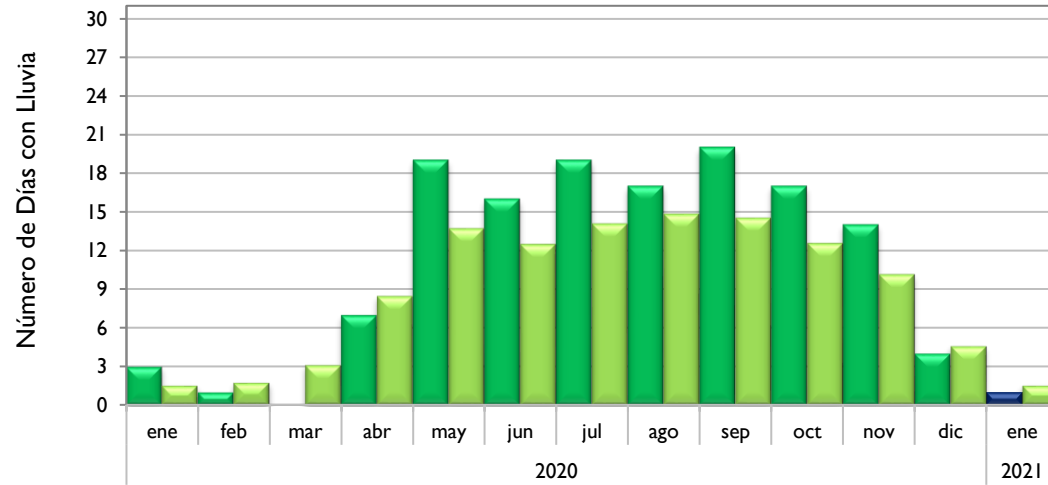
### Soledad - Atlántico



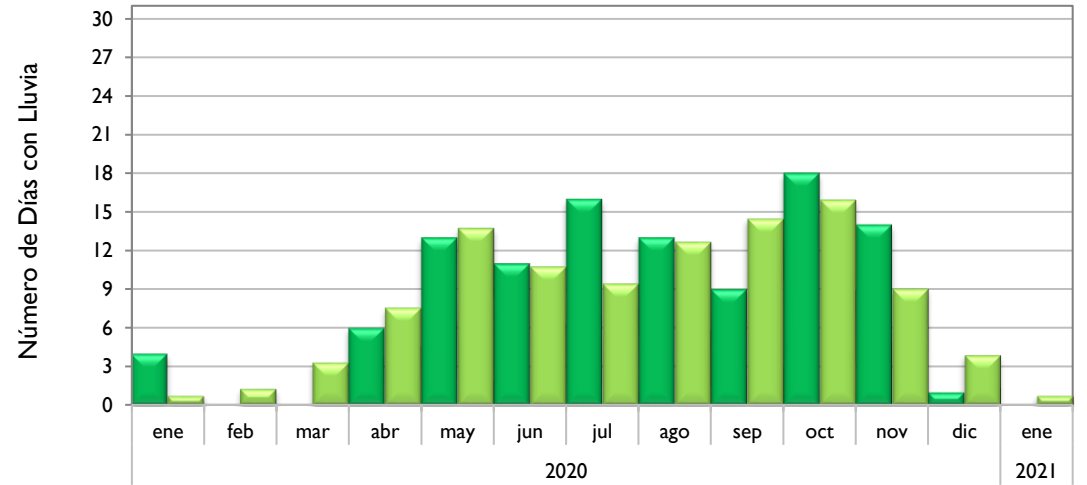
### Santa Marta - Magdalena



### Montería - Córdoba



### Valledupar - Cesar

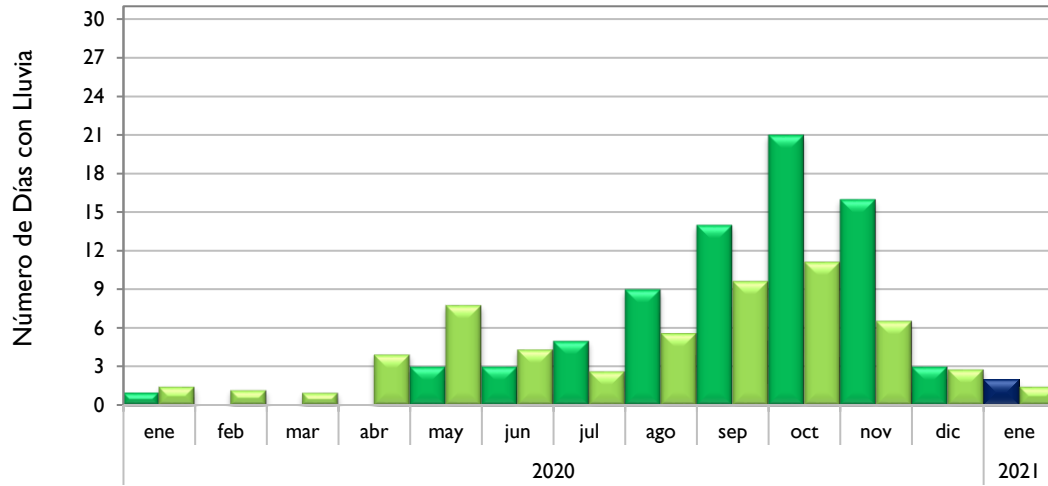


■ Observado 2020

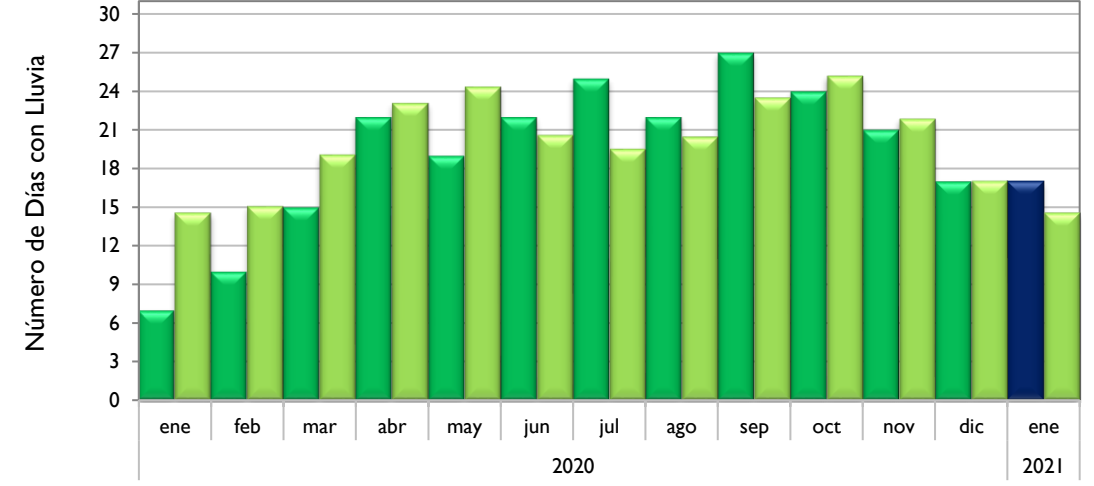
■ Observado 2021

■ Climatología

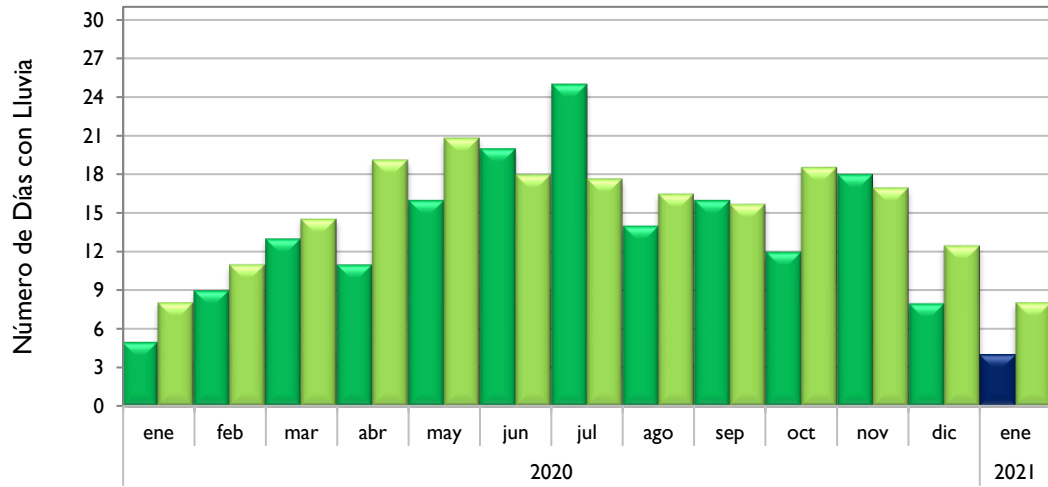
**Riohacha - La Guajira**



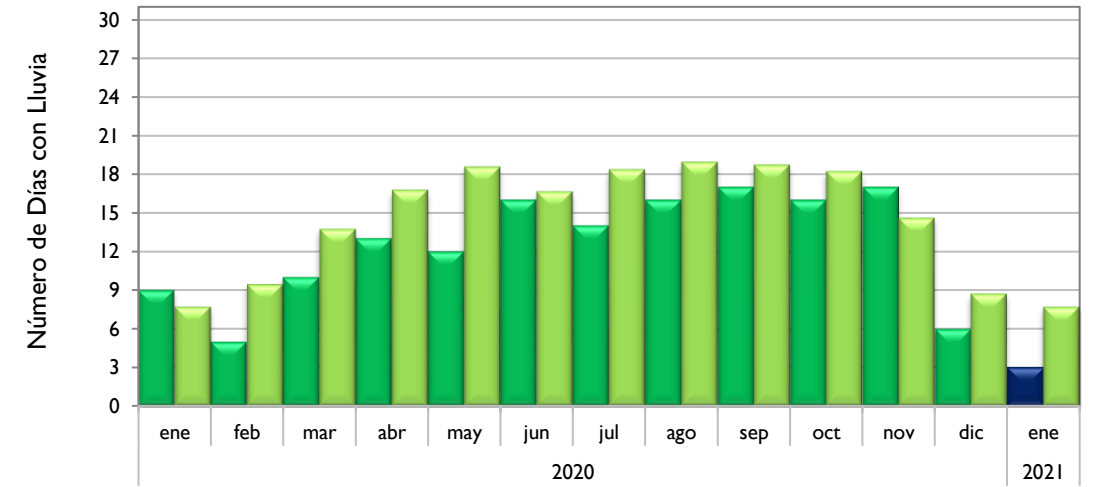
**Rionegro - Antioquia**



**Aeropuerto El Dorado - Bogotá D. C.**



**Lebrija - Santander**

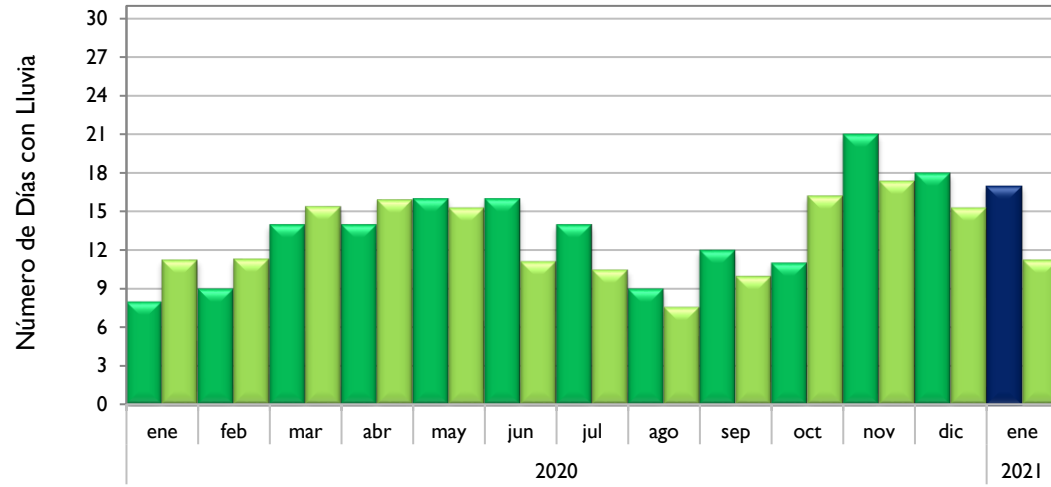


■ Observado 2020

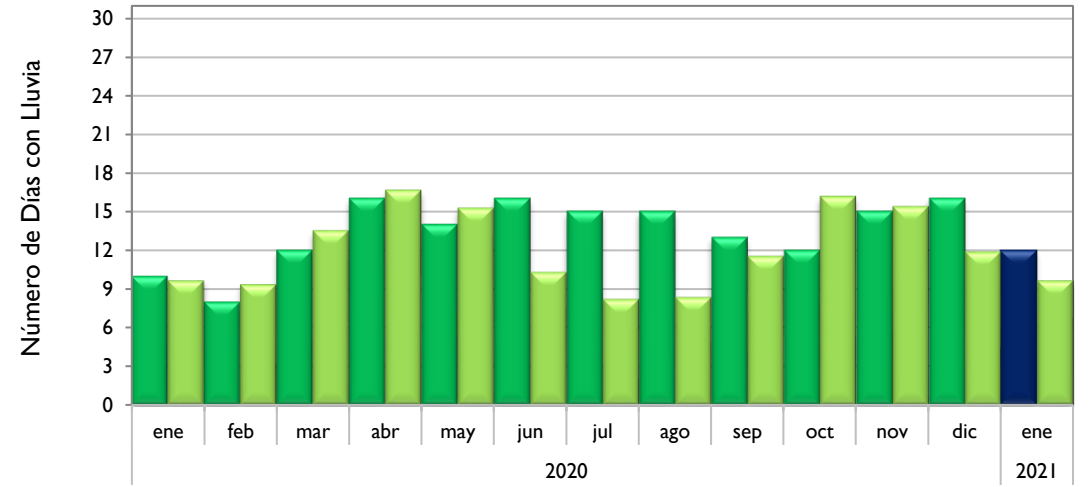
■ Observado 2021

■ Climatología

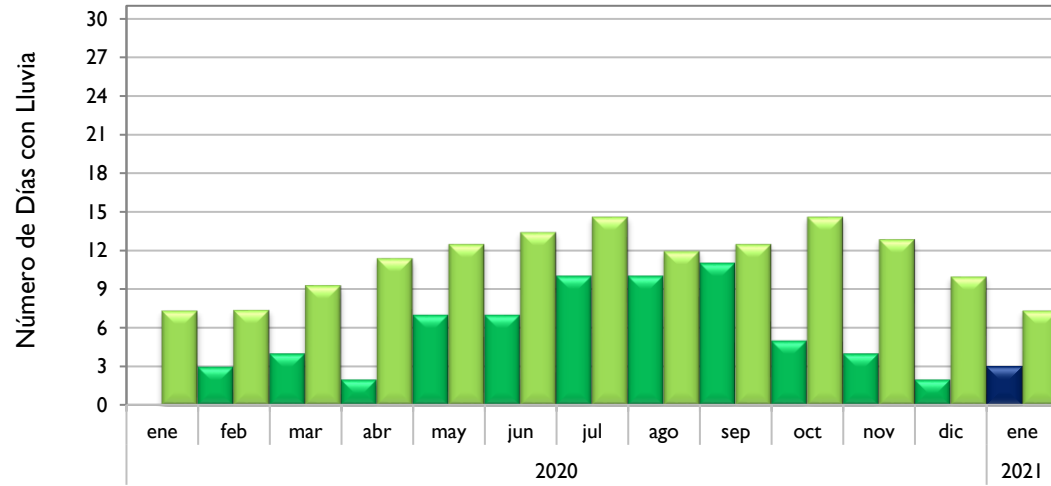
### Neiva - Huila



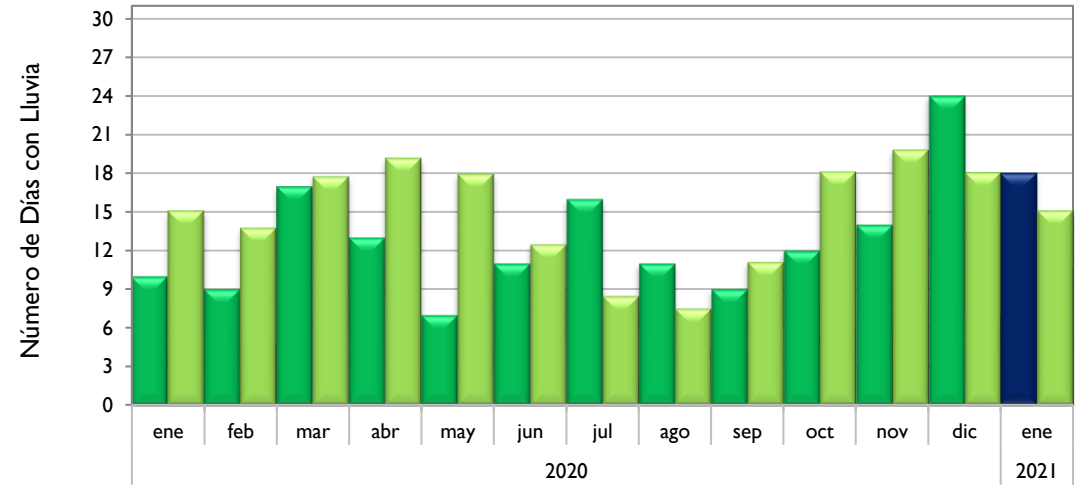
### Palmira - Valle del Cauca



### Cúcuta - Norte de Santander



### Chachagüi - Nariño

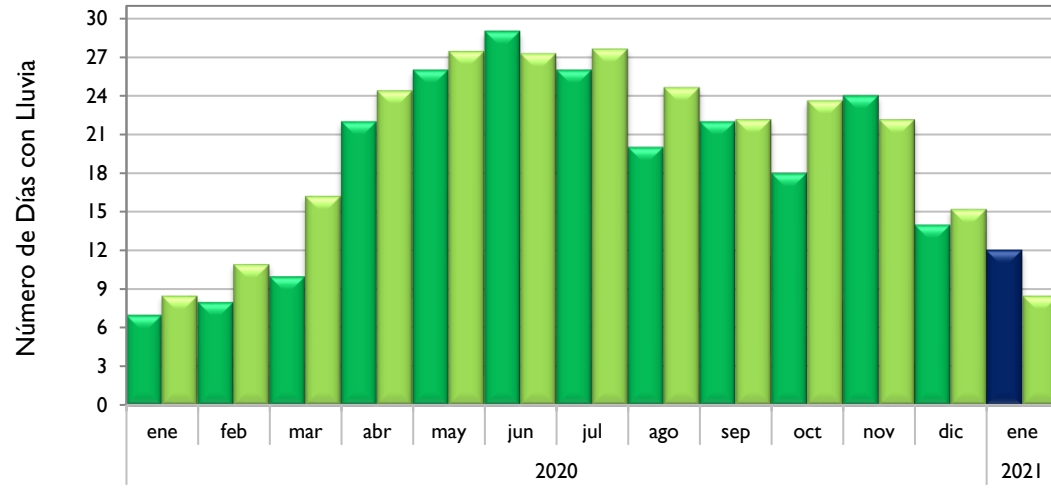


Observado 2020

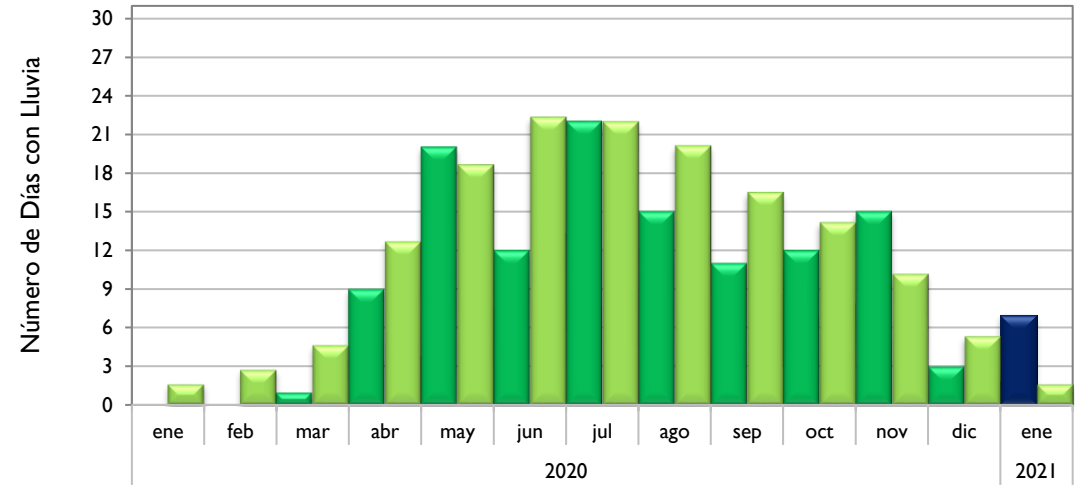
Observado 2021

Climatología

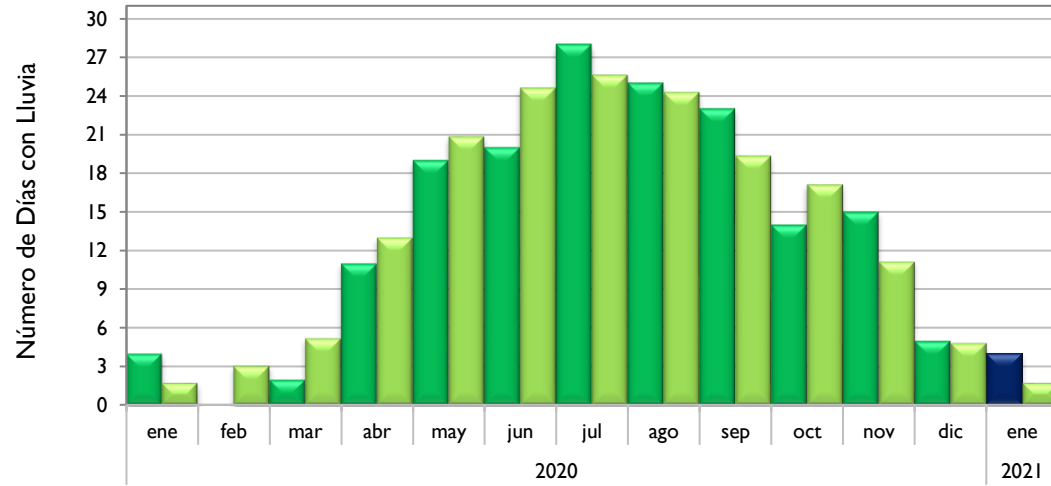
### Villavicencio - Meta



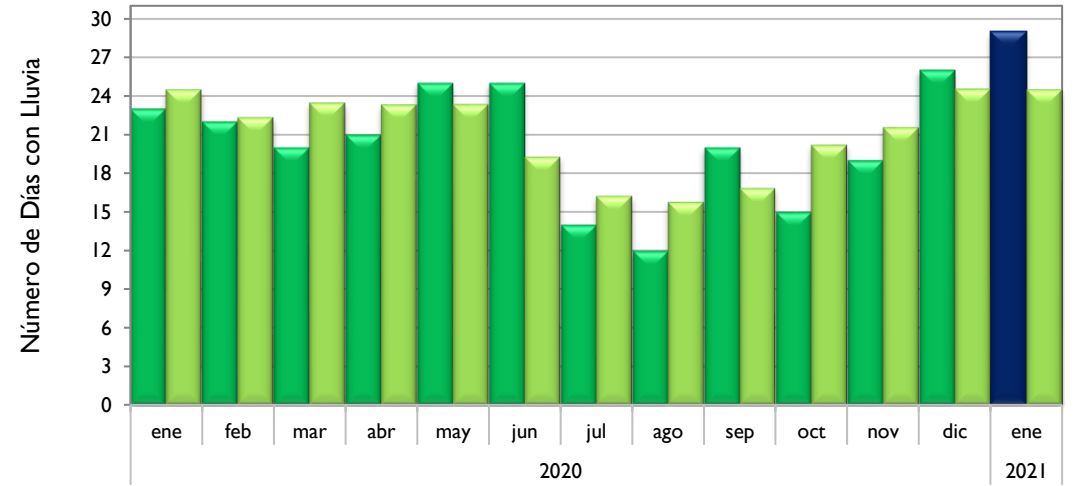
### Arauca - Arauca



### Puerto Carreño - Vichada



### Leticia - Amazonas

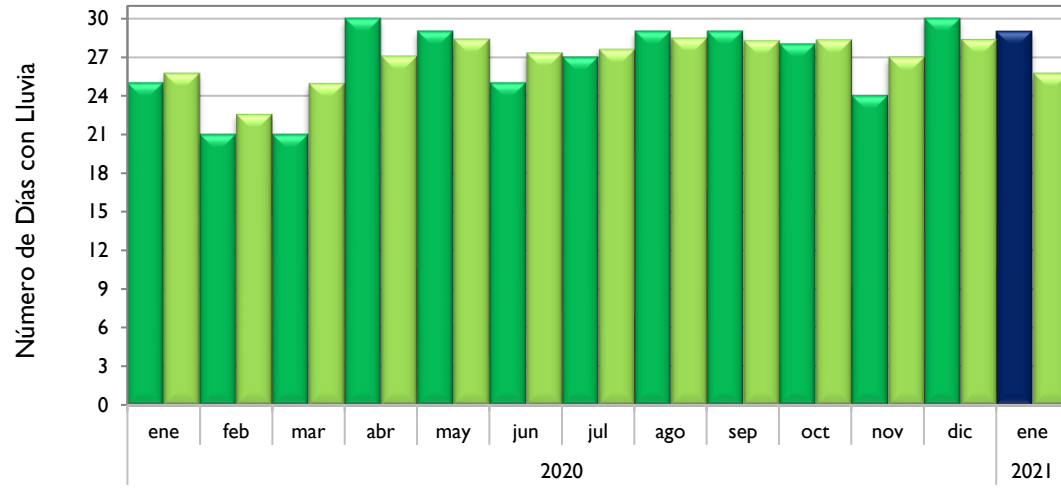


Observado 2020

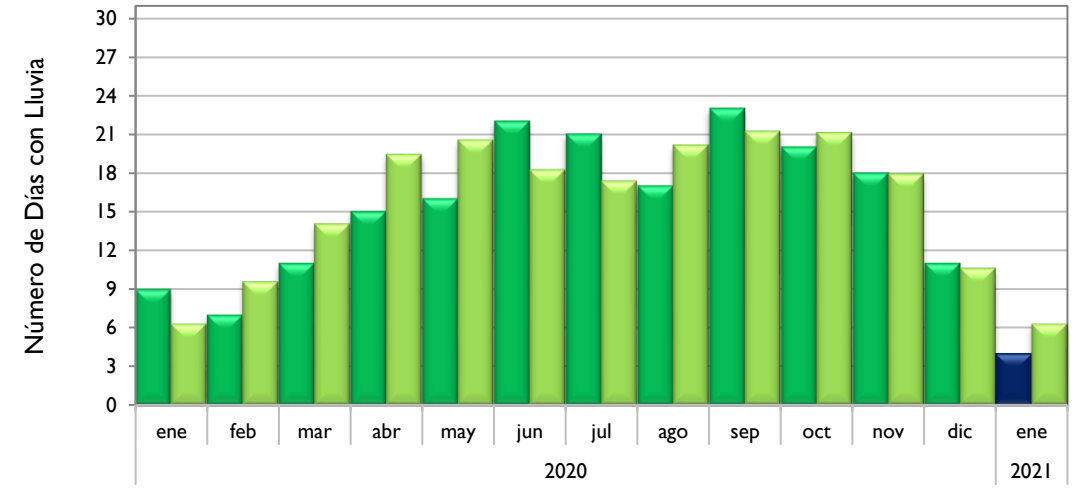
Observado 2021

Climatología

### Quibdó - Chocó



### Barrancabermeja - Santander



### Armenia - Quindío

