

Febrero
2021



Boletín Climatológico

Seguimiento Mensual
de la Precipitación

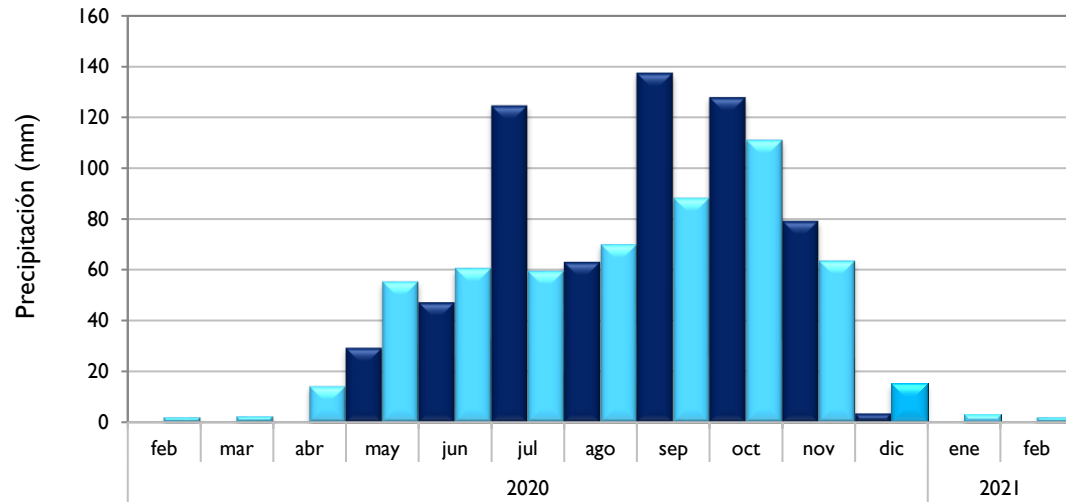
 Estaciones de
Seguimiento

■ Observado 2020

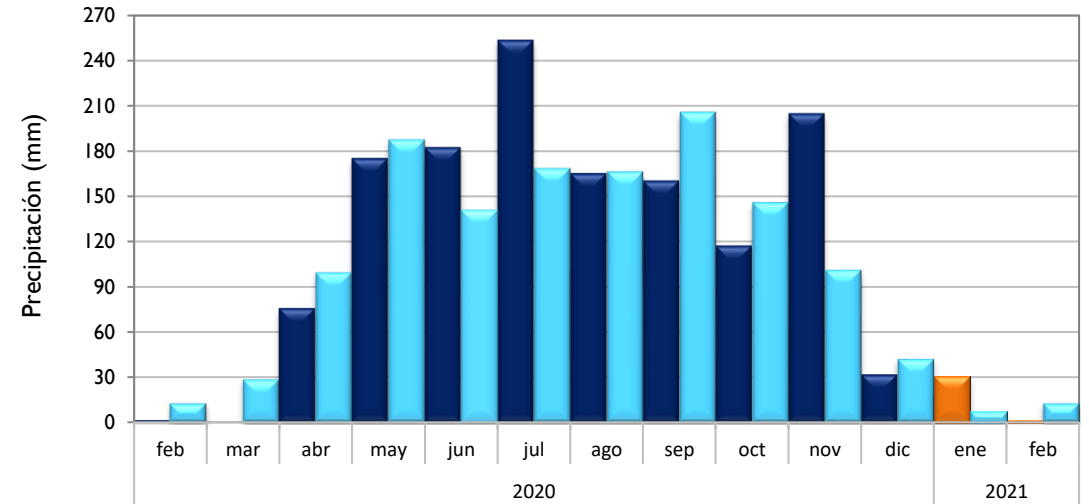
■ Observado 2021

■ Climatología

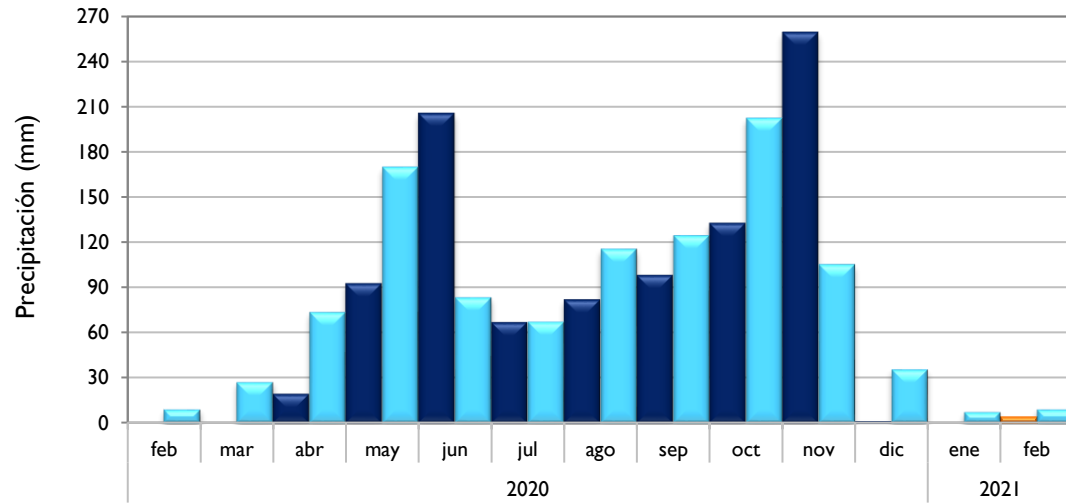
Santa Marta - Magdalena



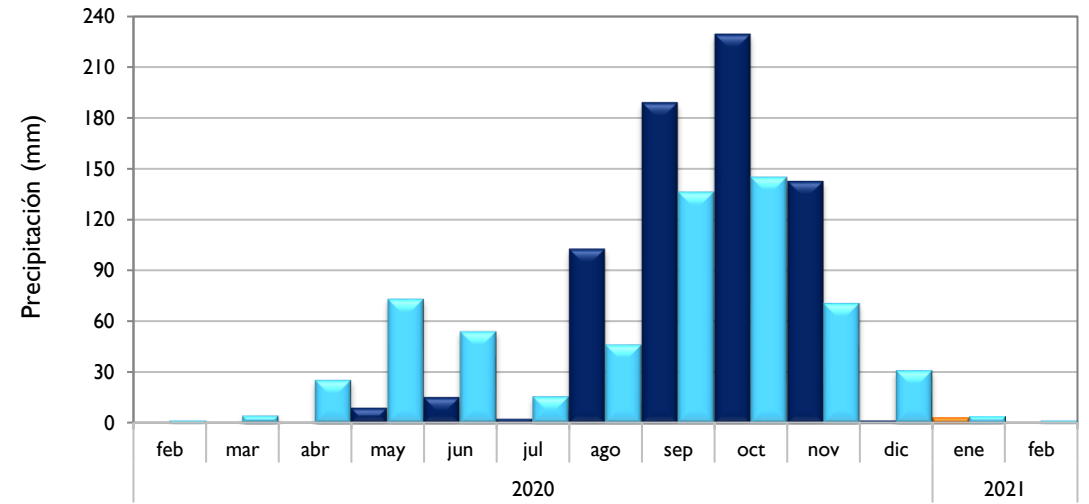
Montería - Córdoba



Valledupar - Cesar



Riohacha - La Guajira

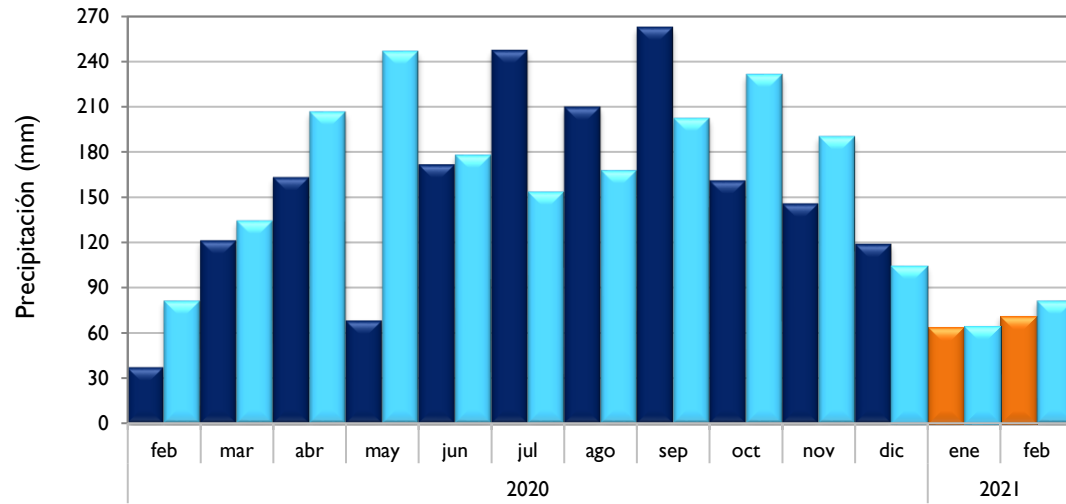


■ Observado 2020

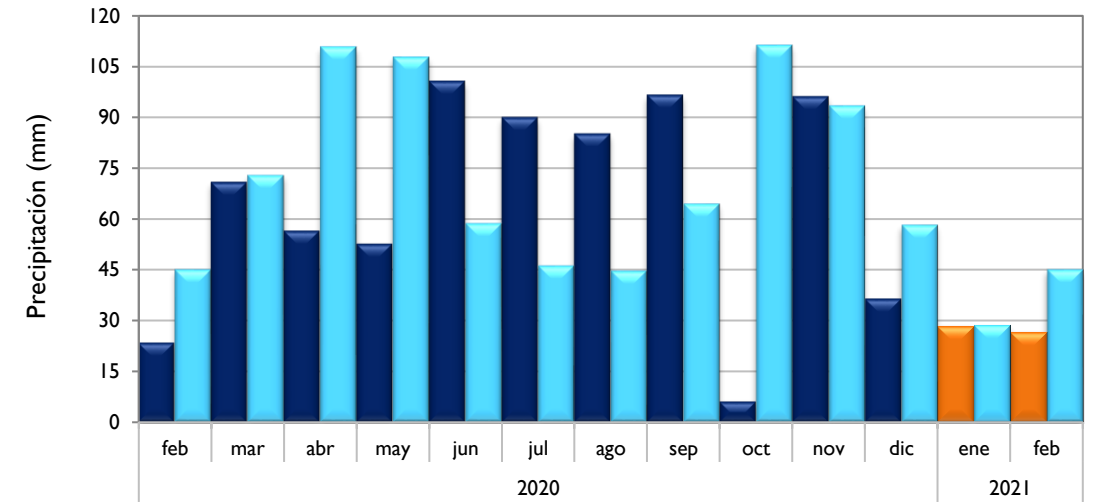
■ Observado 2021

■ Climatología

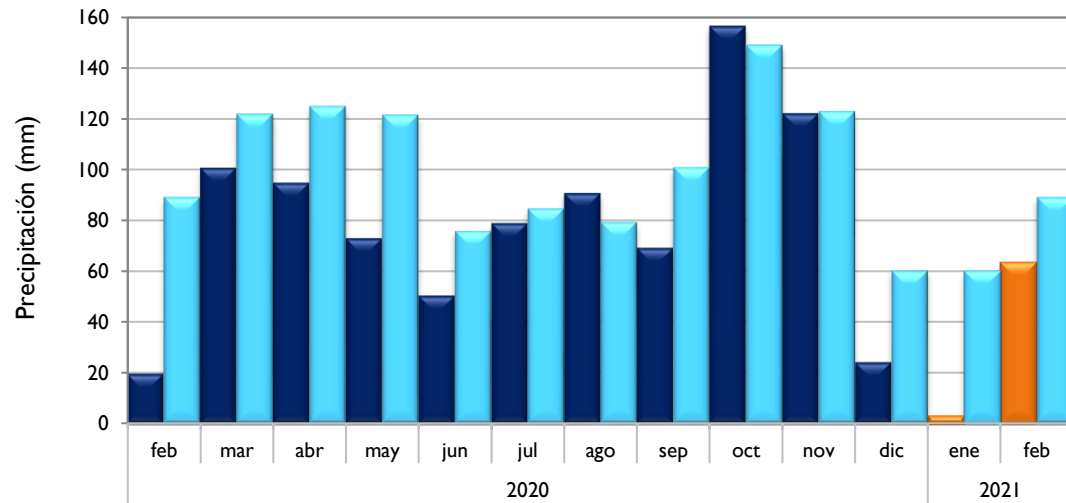
Rionegro - Antioquia



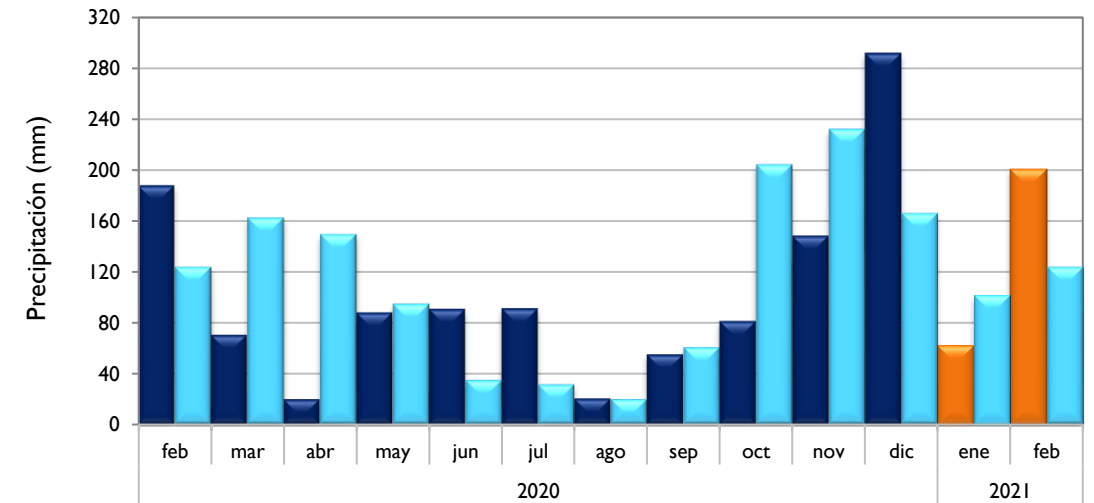
Aeropuerto El Dorado - Bogotá D. C.



Lebrija - Santander



Neiva - Huila

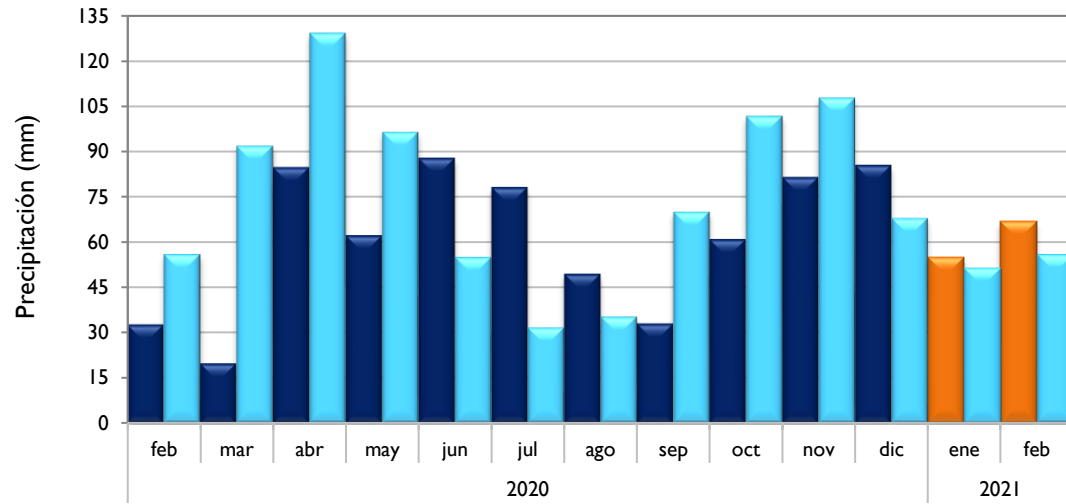


■ Observado 2020

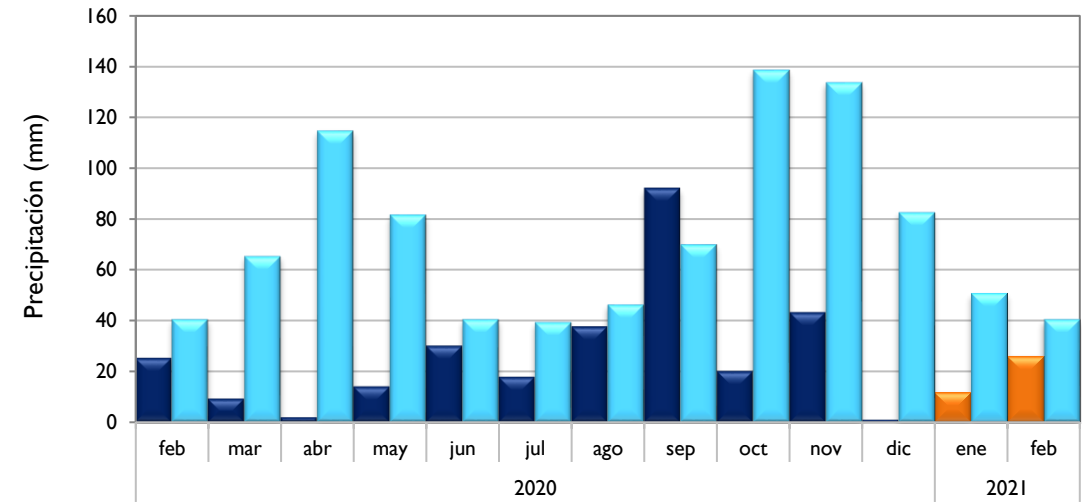
■ Observado 2021

■ Climatología

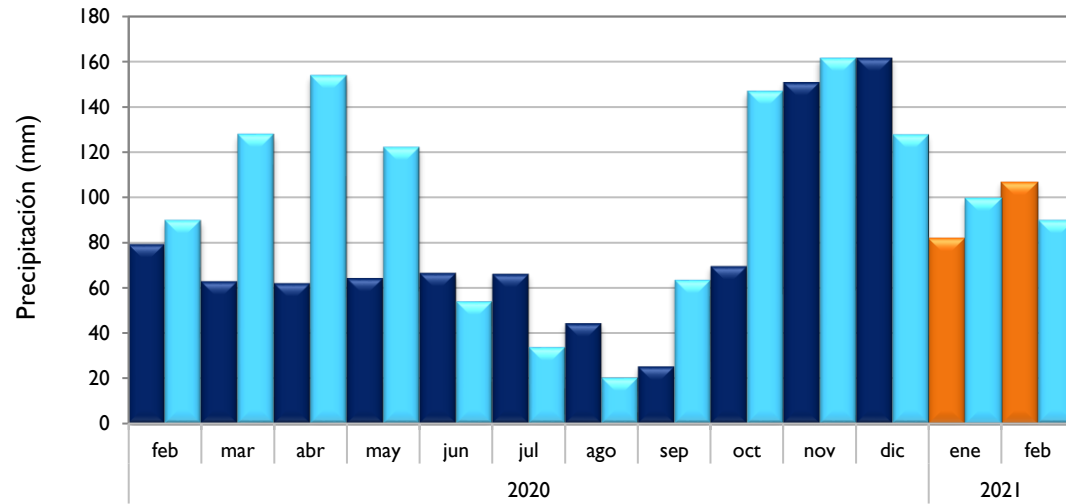
Palmira - Valle del Cauca



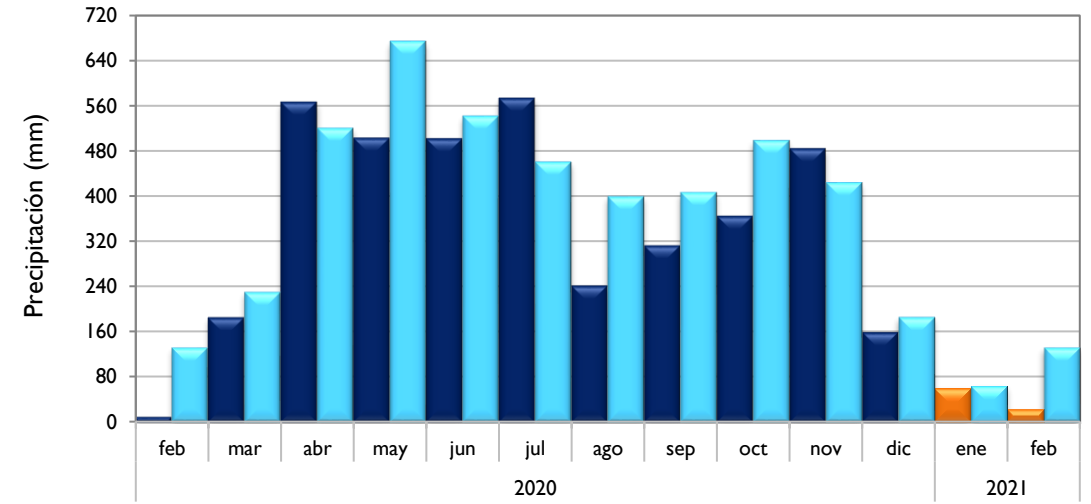
Cúcuta - Norte de Santander



Chachagüí - Nariño



Villavicencio - Meta

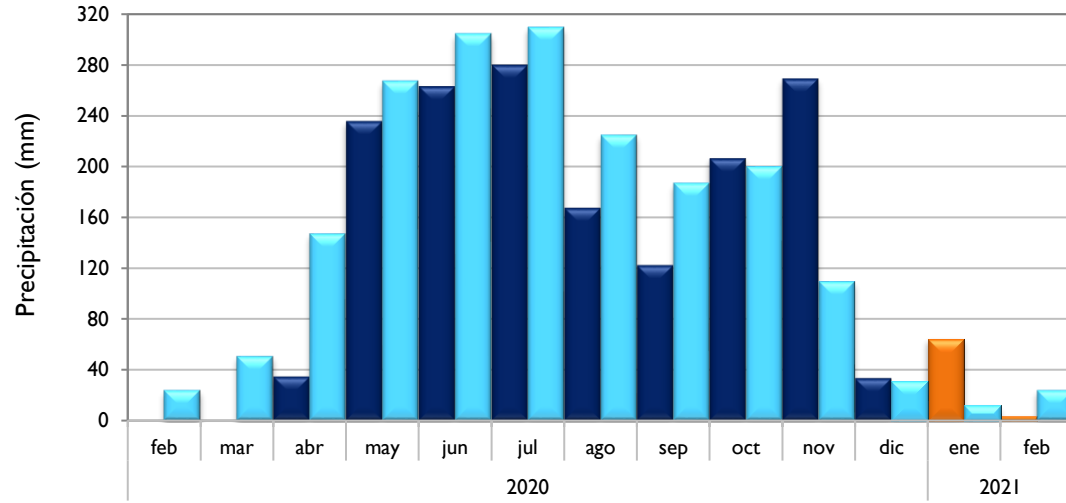


■ Observado 2020

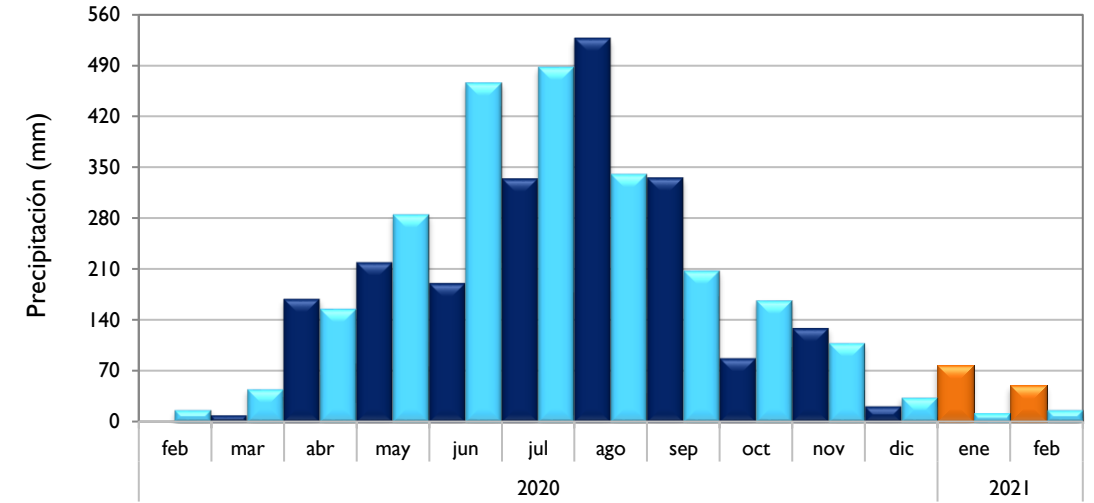
■ Observado 2021

■ Climatología

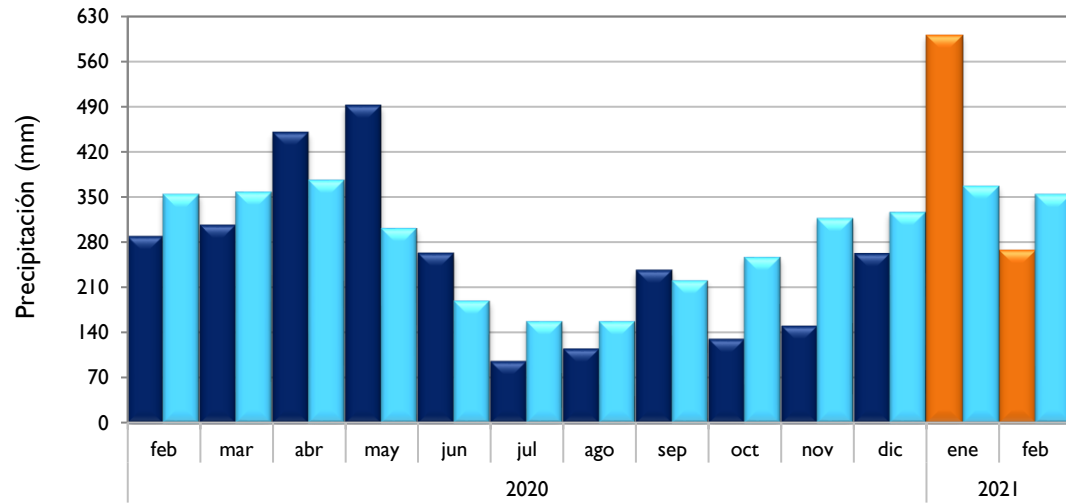
Arauca - Arauca



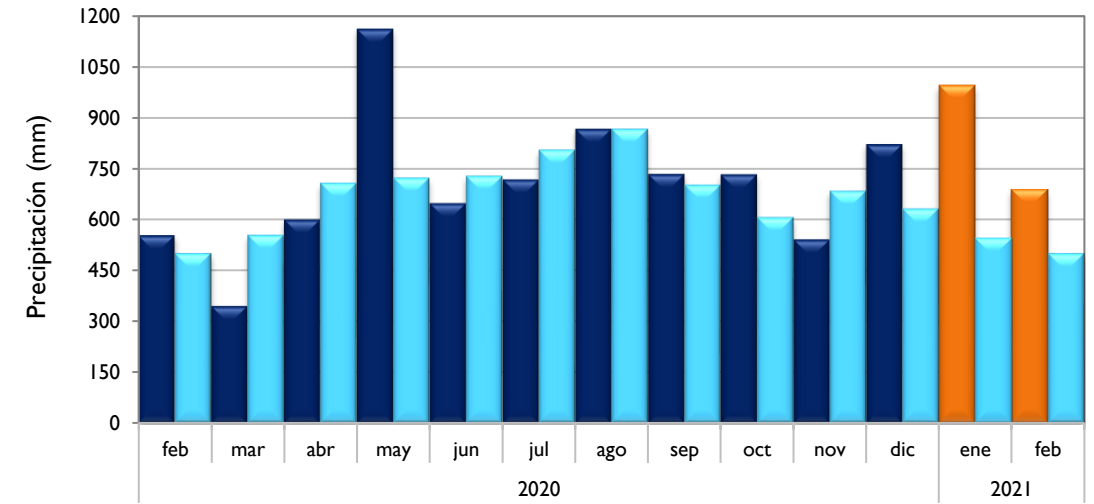
Puerto Carreño - Vichada



Leticia - Amazonas



Quibdó - Chocó

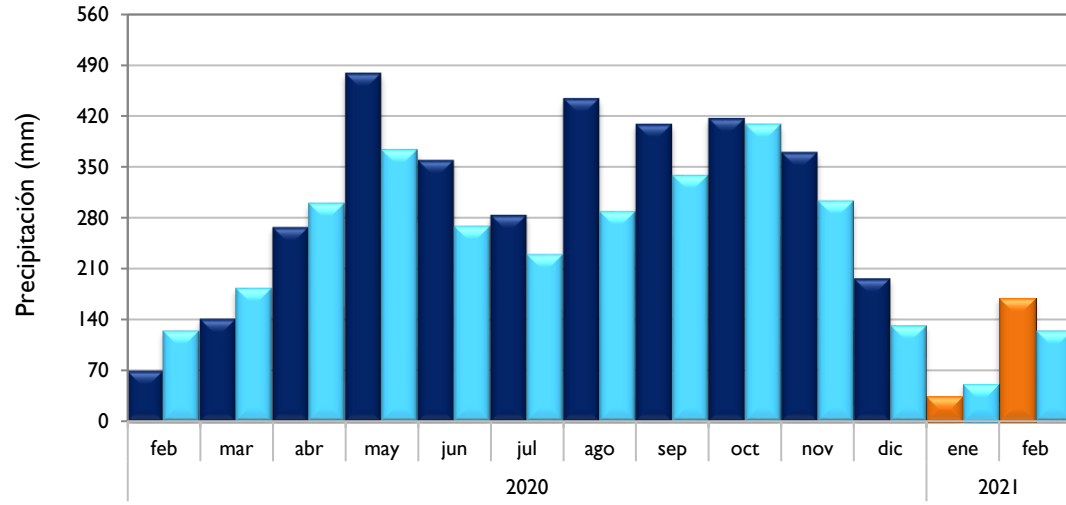


■ Observado 2020

■ Observado 2021

■ Climatología

Barrancabermeja - Santander



Armenia - Quindío

