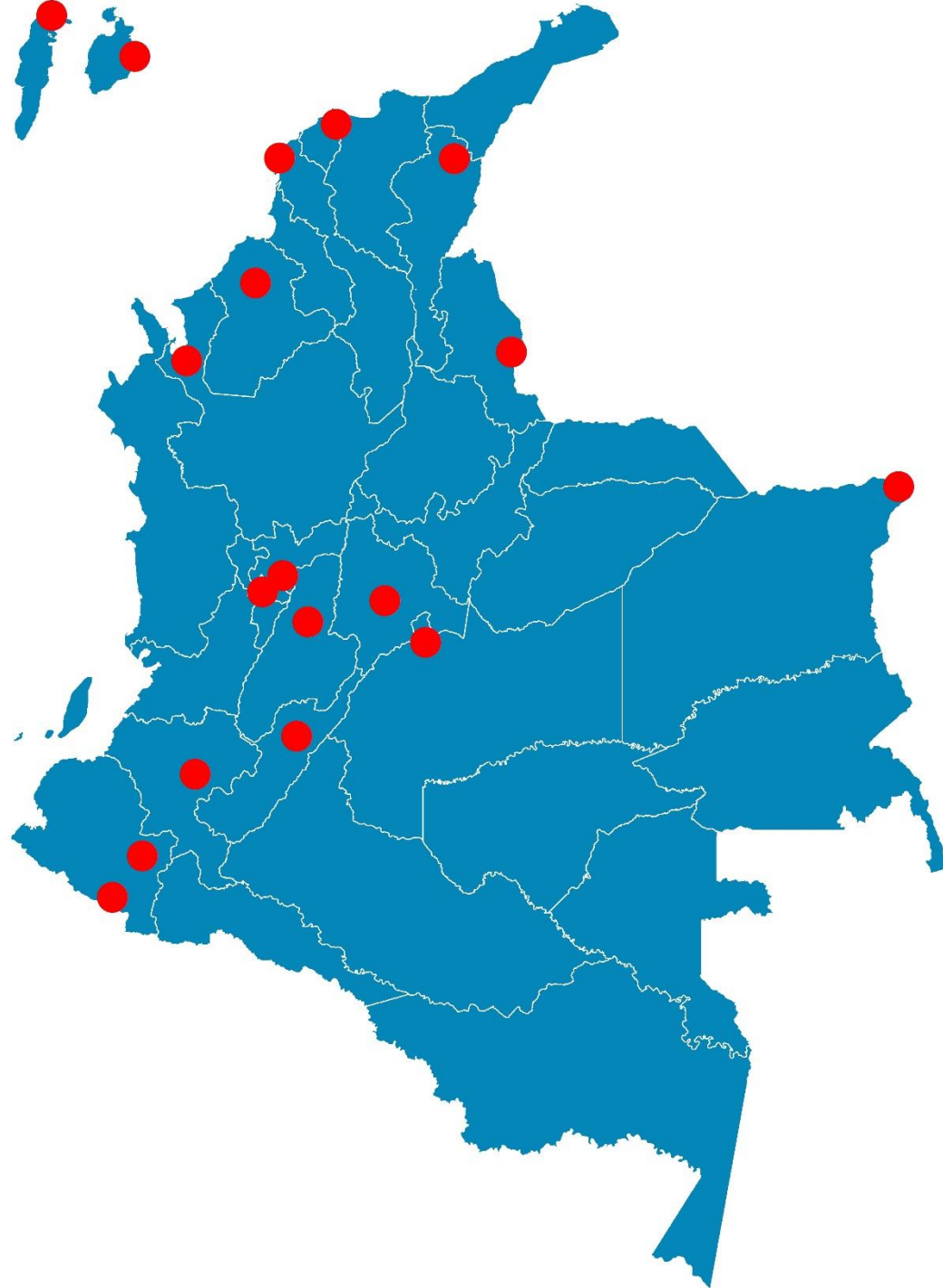


Diciembre
2020



Boletín Climatológico

Seguimiento Diario
de las Temperaturas Mínima, Media
y Máxima

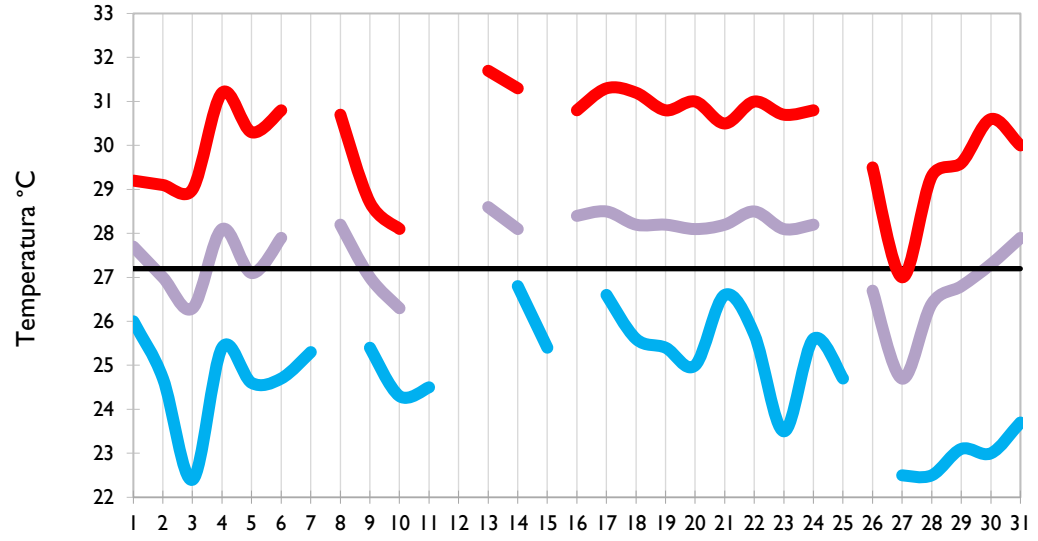
 Estaciones de
Seguimiento

Temperatura Mínima

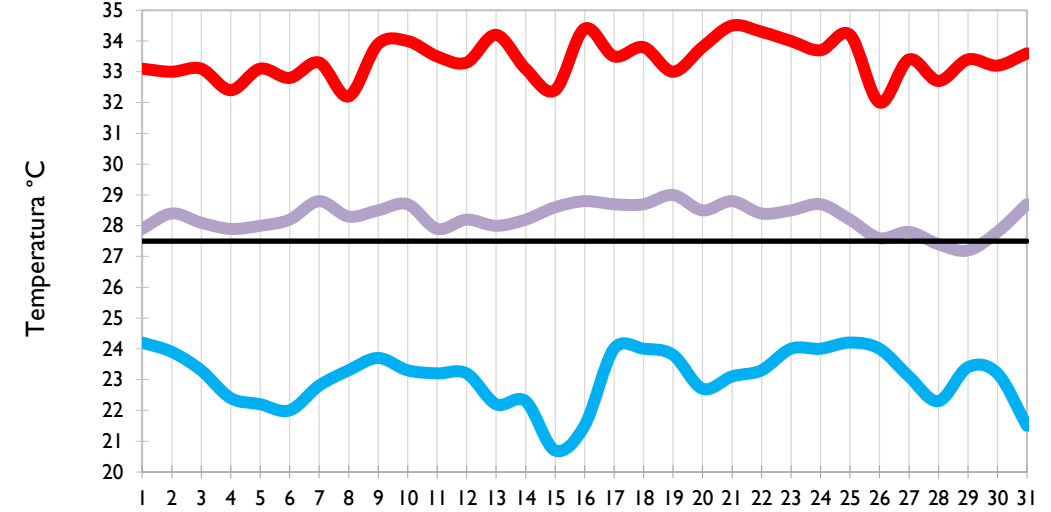
Temperatura Media

Temperatura Máxima

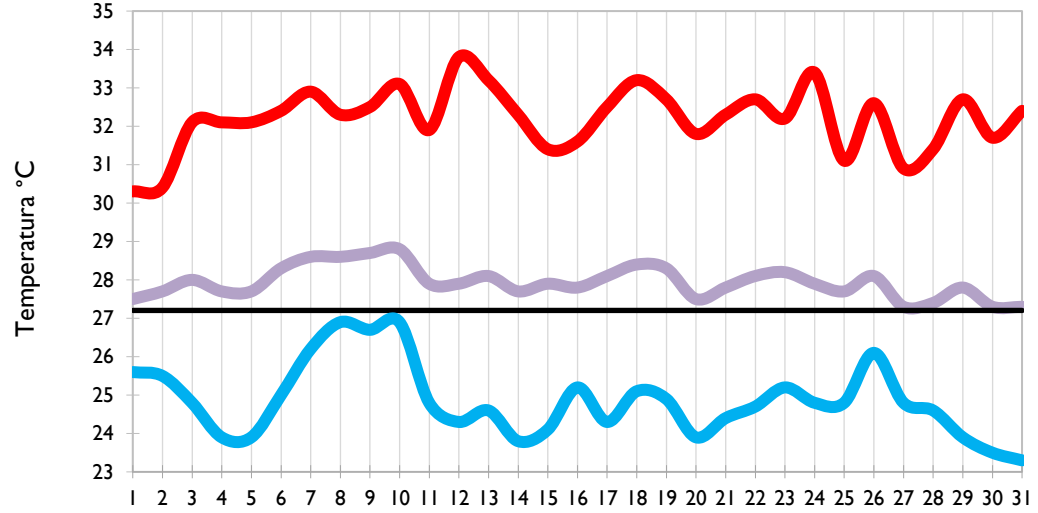
San Andrés - Archipiélago



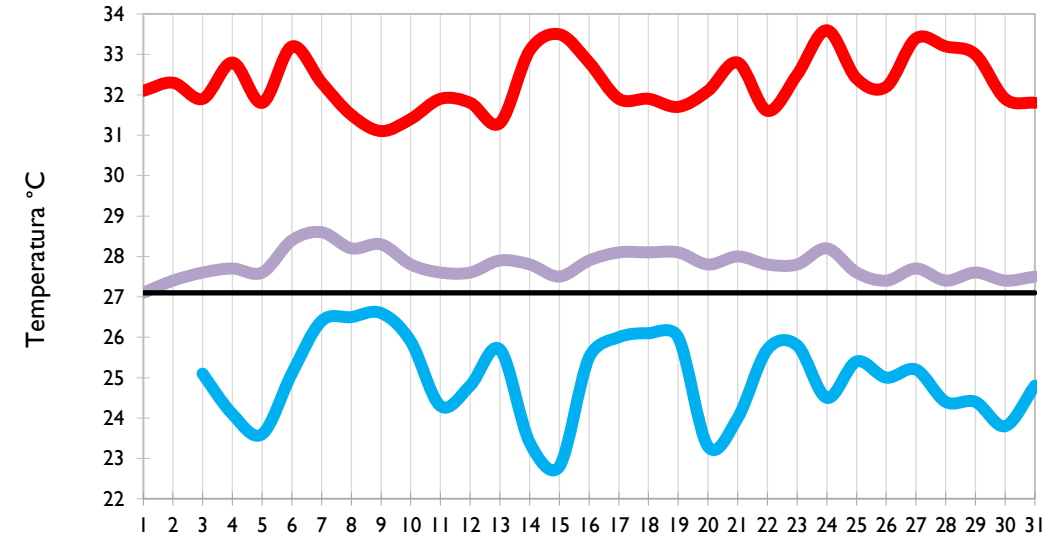
Santa Marta - Magdalena



Cartagena - Bolívar



Soledad - Atlántico

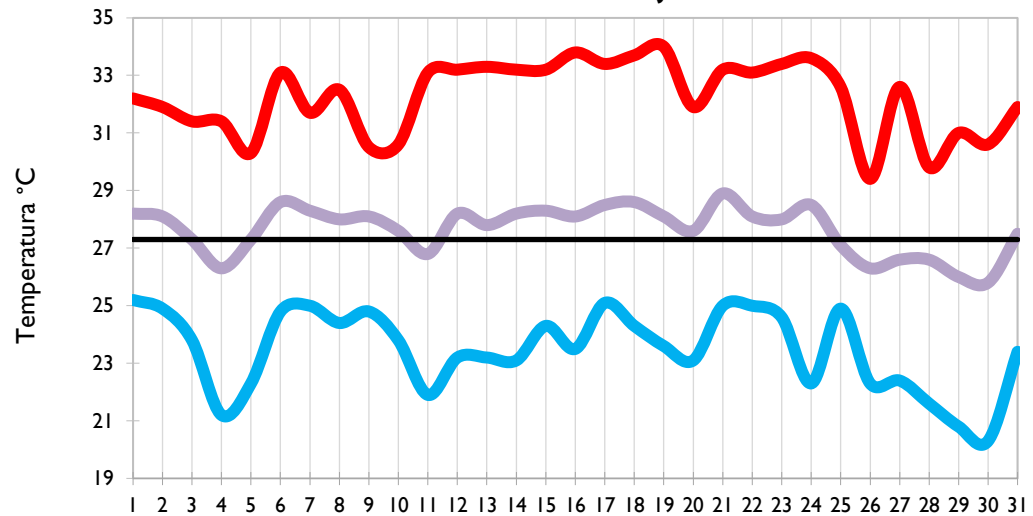


Temperatura Mínima

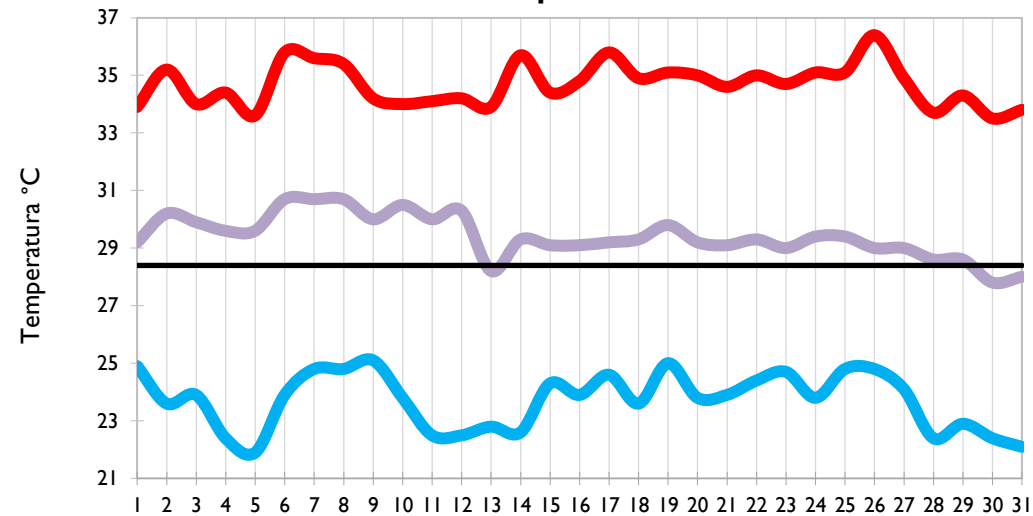
Temperatura Media

Temperatura Máxima

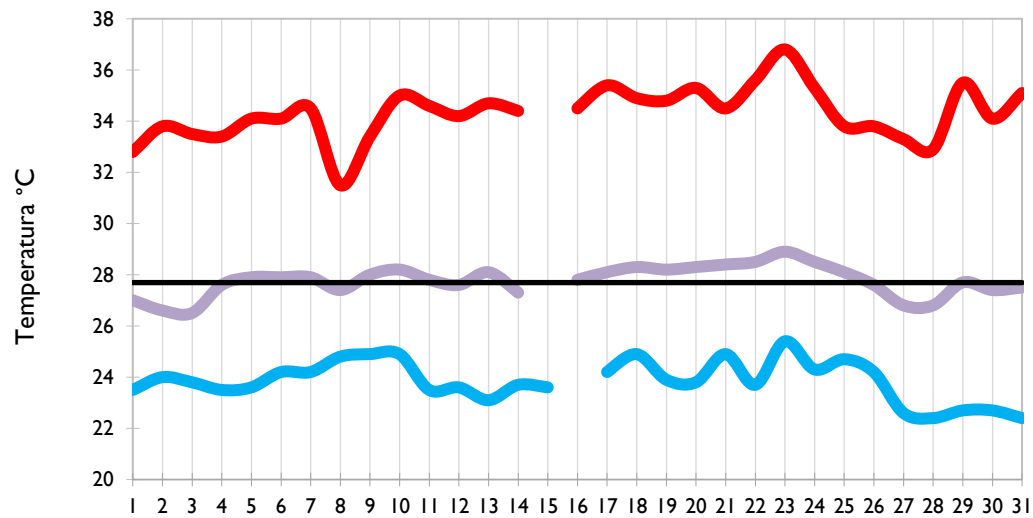
Riohacha - La Guajira



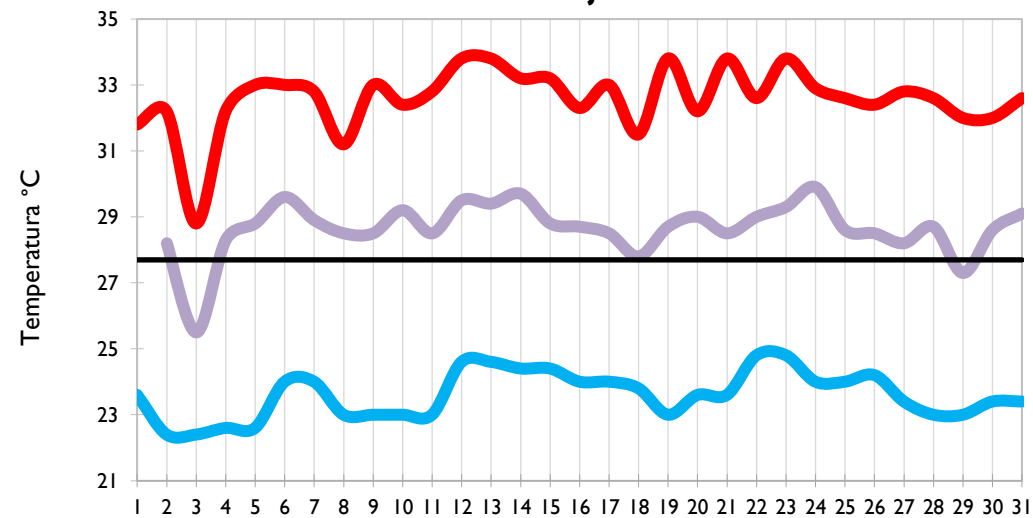
Valledupar - Cesar



Montería - Córdoba



Barrancabermeja - Santander

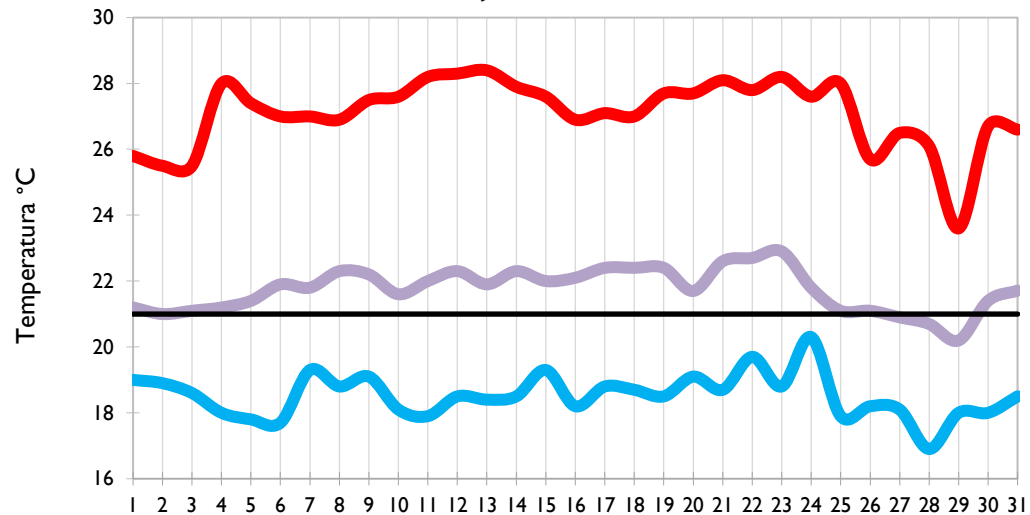


Temperatura Mínima

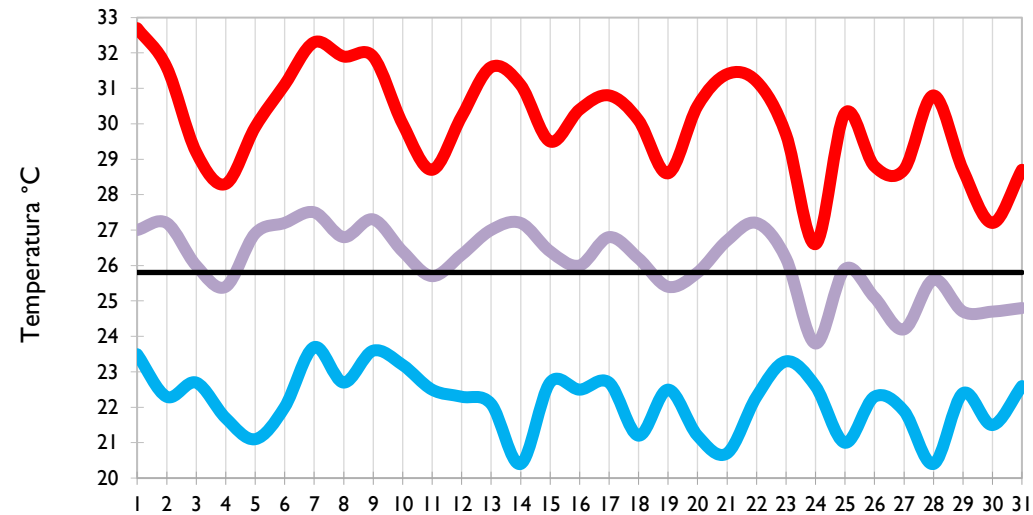
Temperatura Media

Temperatura Máxima

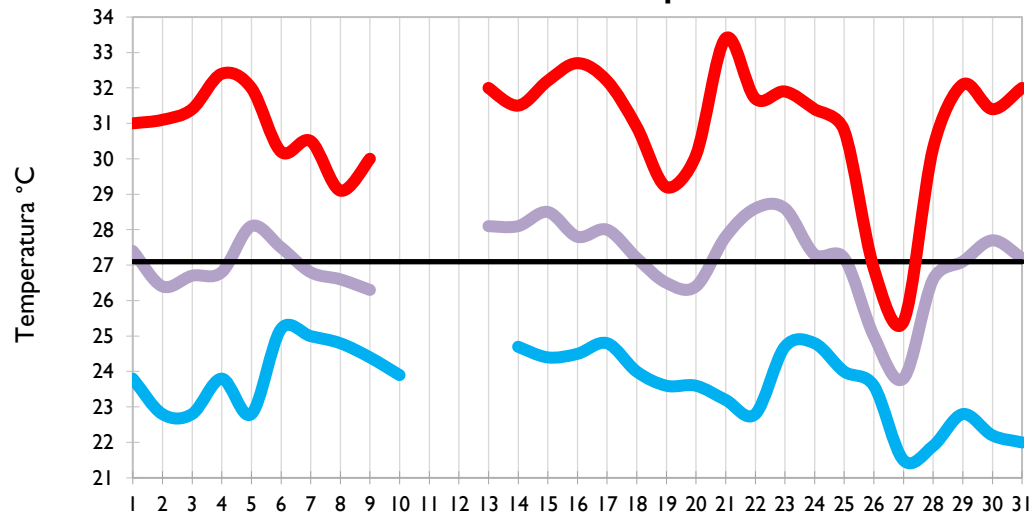
Lebrija - Santander



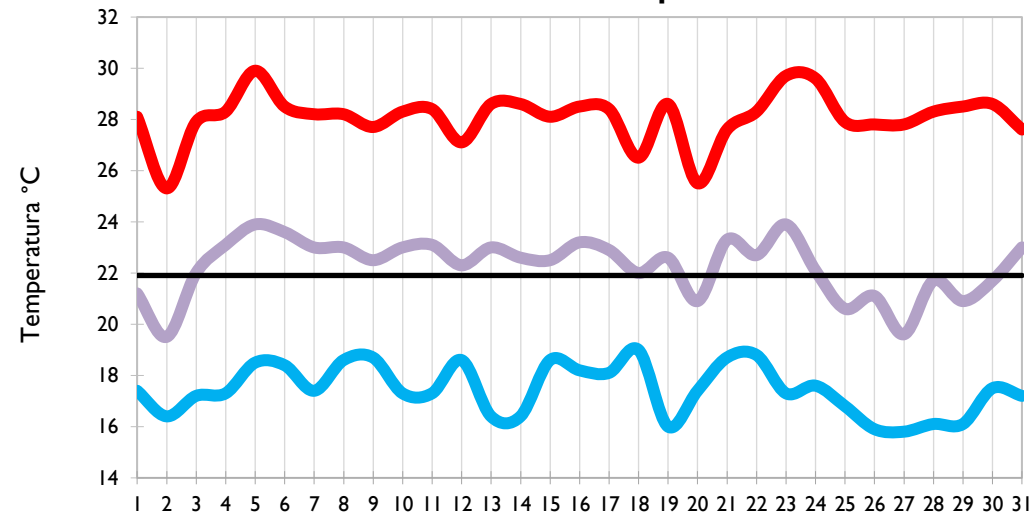
Cúcuta - Norte de Santander



Los Cedros - Antioquia



Medellín - Antioquia

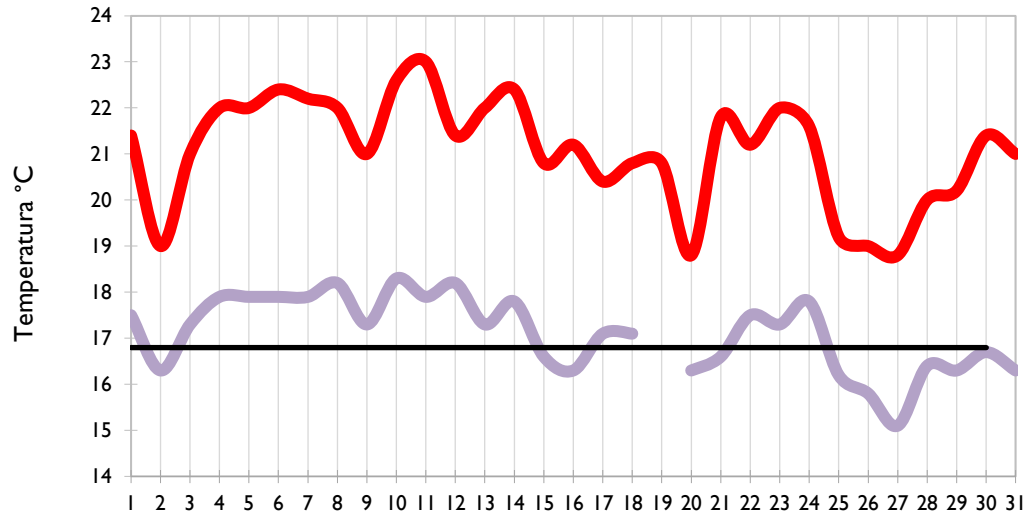


Temperatura Mínima

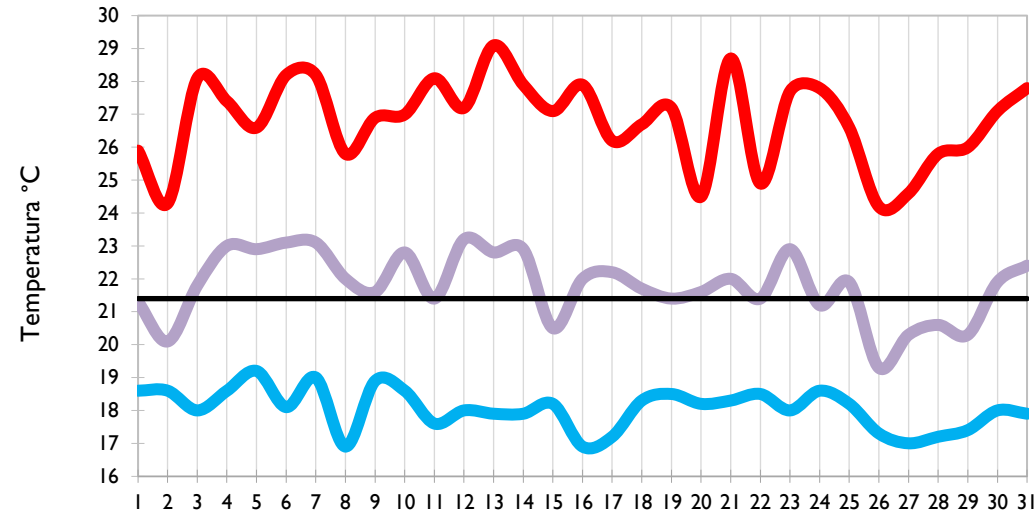
Temperatura Media

Temperatura Máxima

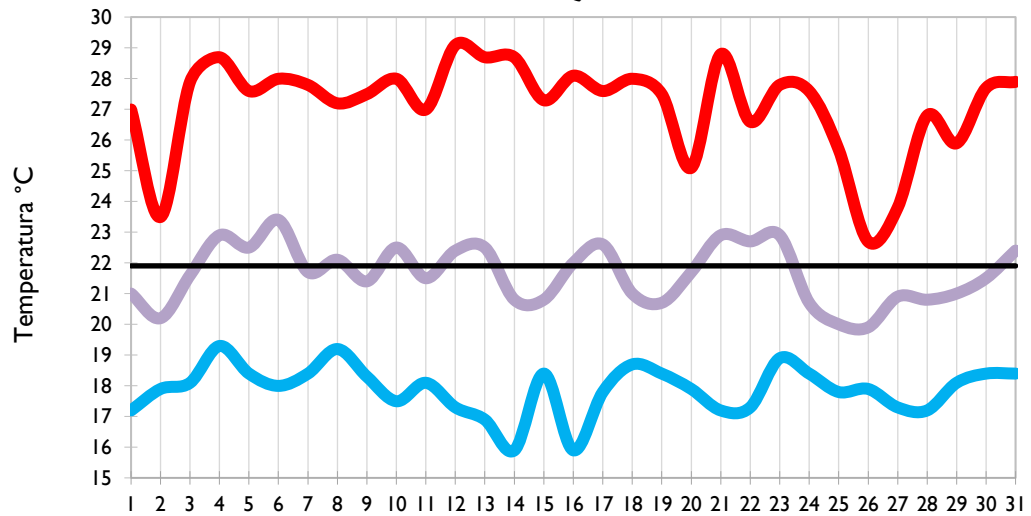
Manizales - Caldas



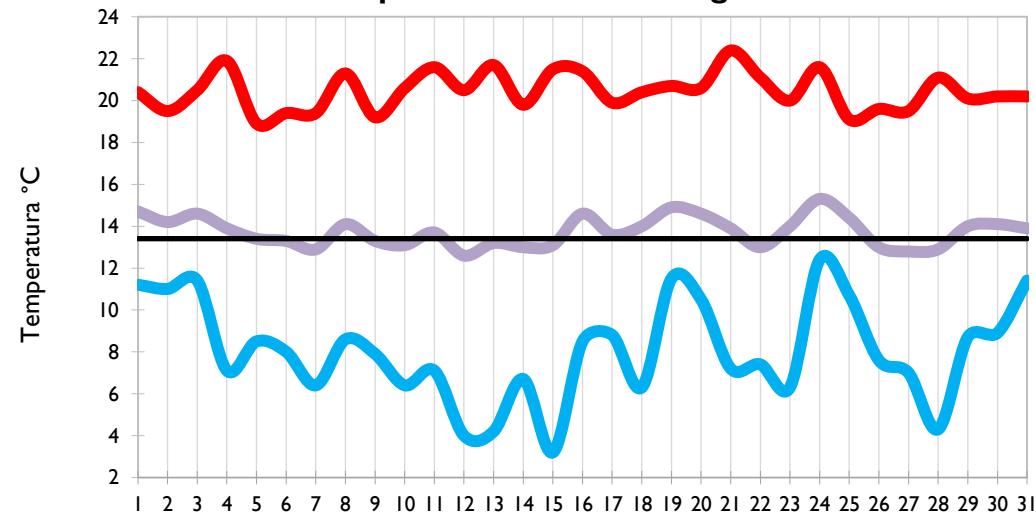
Pereira - Risaralda



Armenia - Quindío



Aeropuerto El Dorado - Bogotá D. C.

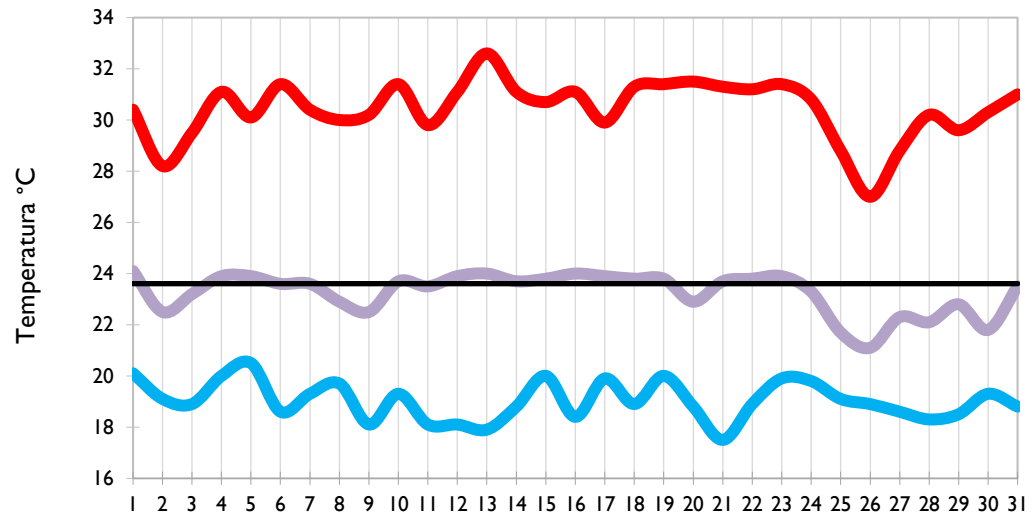


Temperatura Mínima

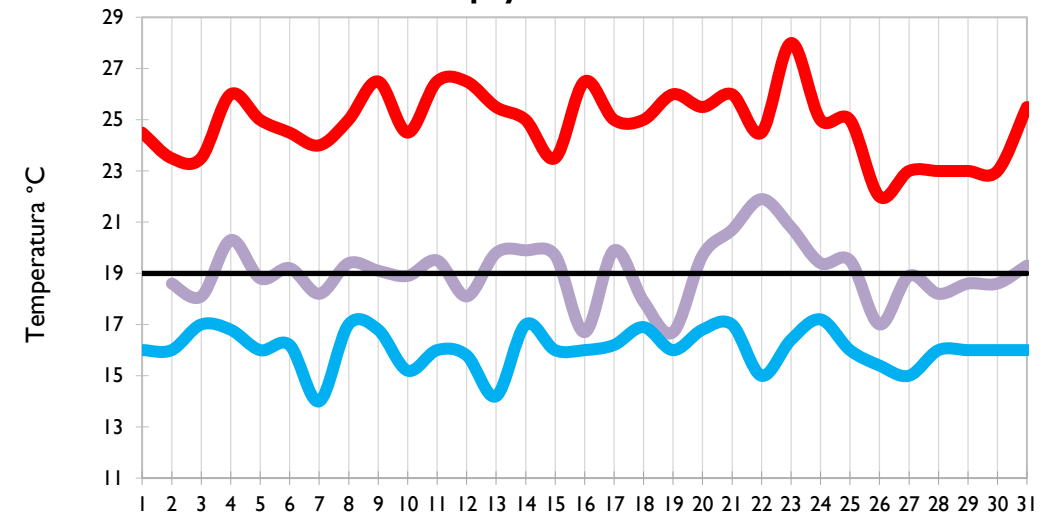
Temperatura Media

Temperatura Máxima

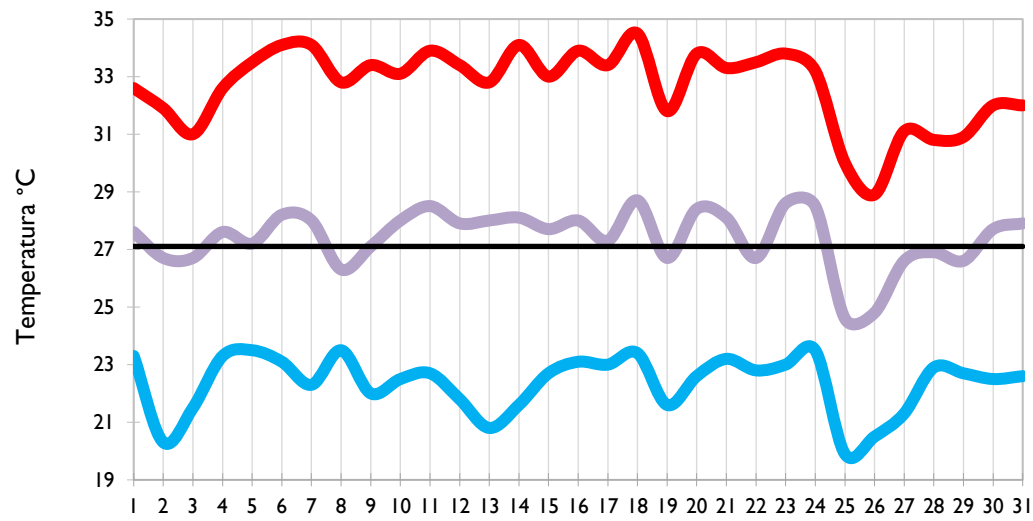
Palmira –Valle del Cauca



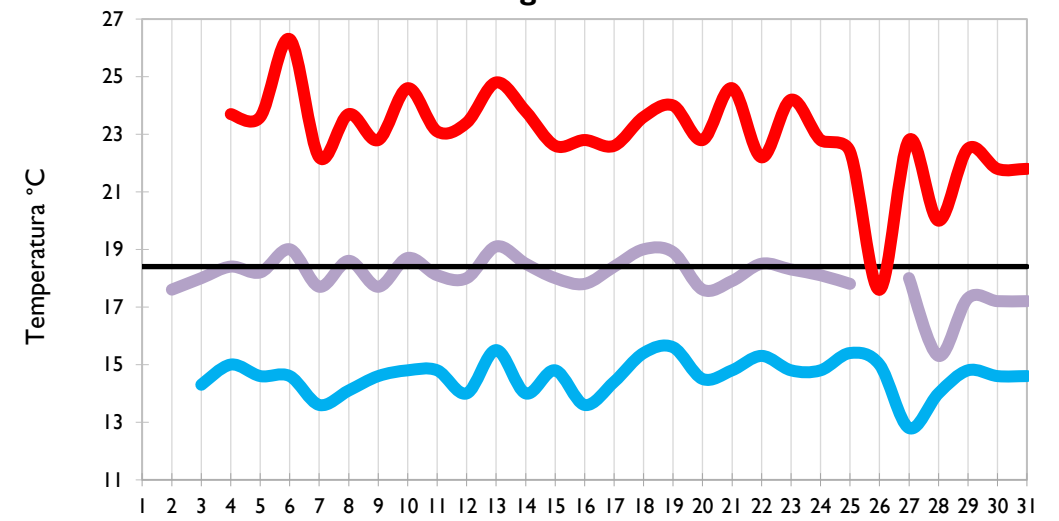
Popayán - Cauca



Neiva - Huila



Chachagüí - Nariño

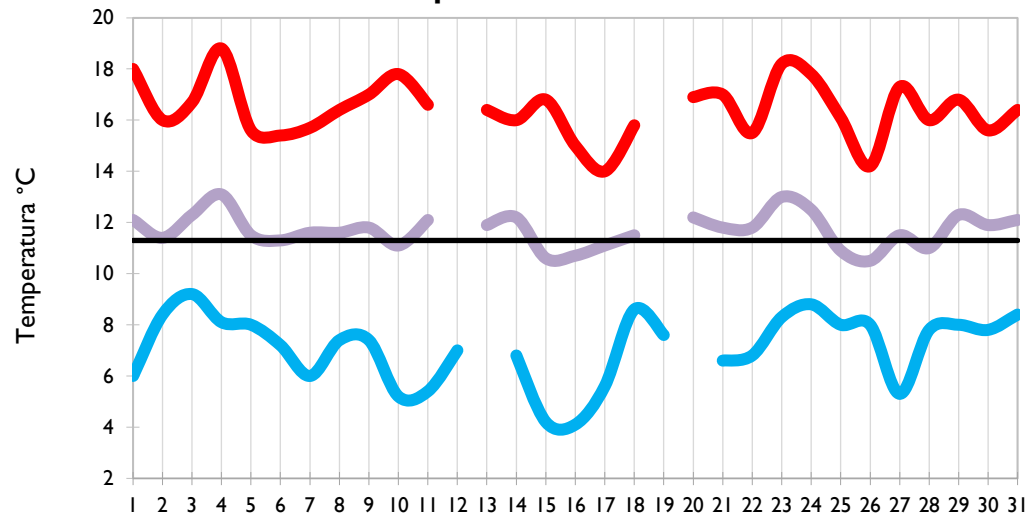


Temperatura Mínima

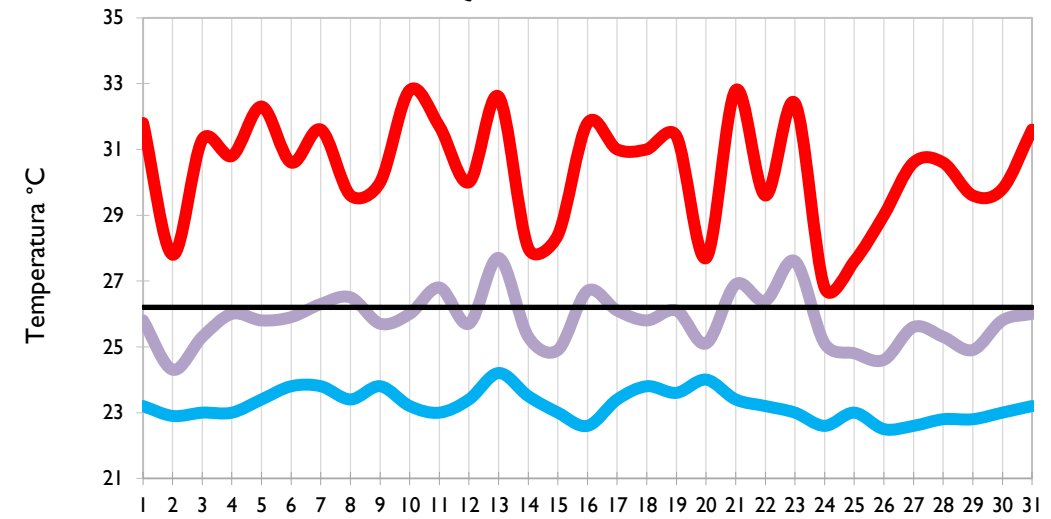
Temperatura Media

Temperatura Máxima

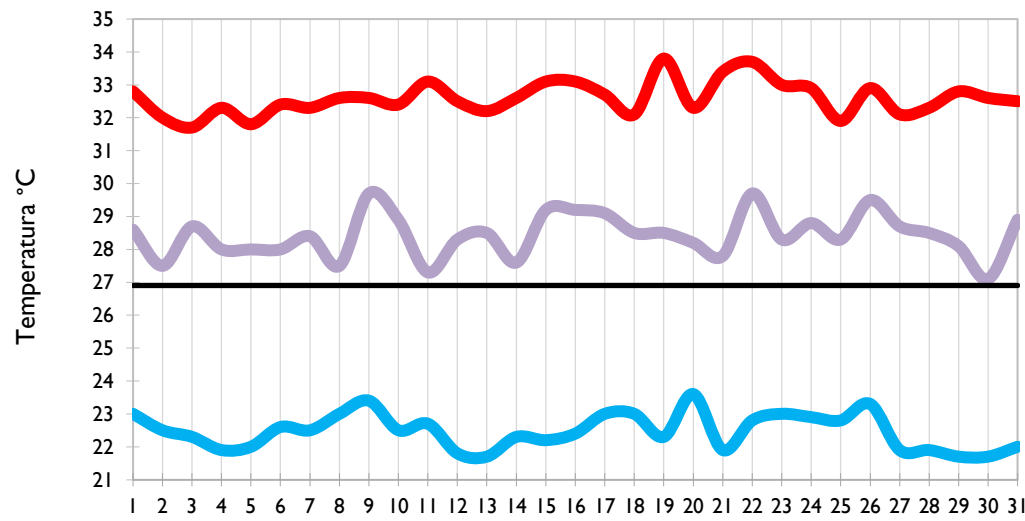
Ipiales - Nariño



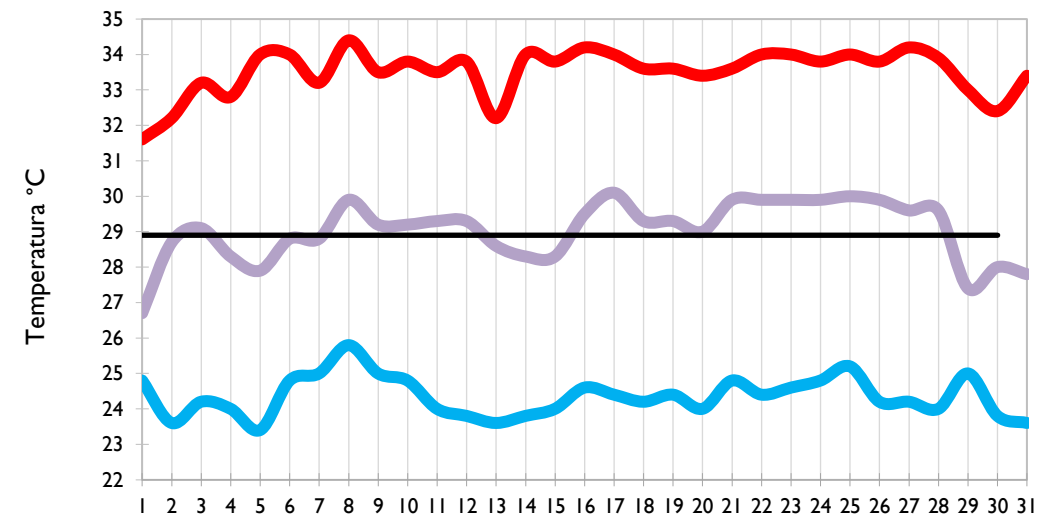
Quibdó - Chocó



Arauca - Arauca



Puerto Carreño - Vichada

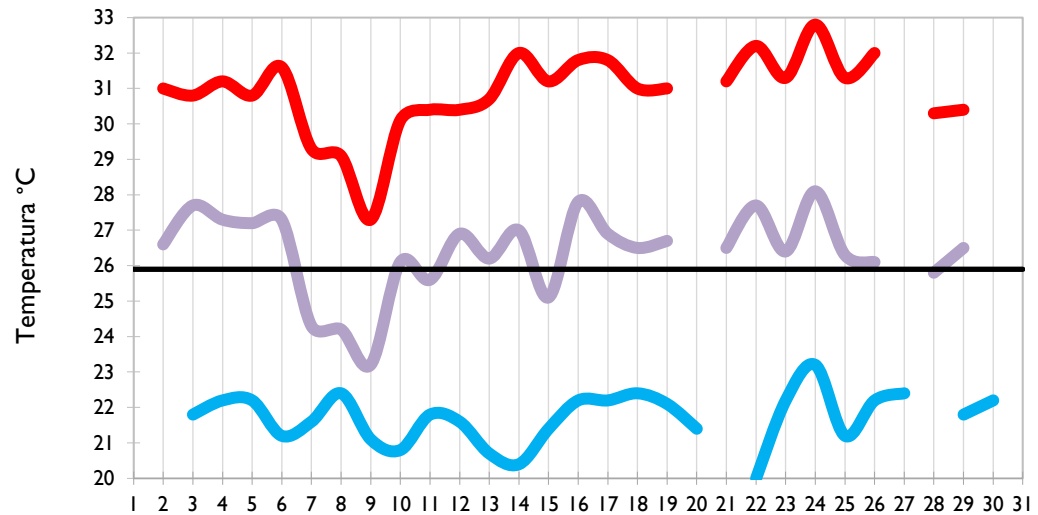


Temperatura Mínima

Temperatura Media

Temperatura Máxima

Villavicencio - Meta



Leticia - Amazonas

