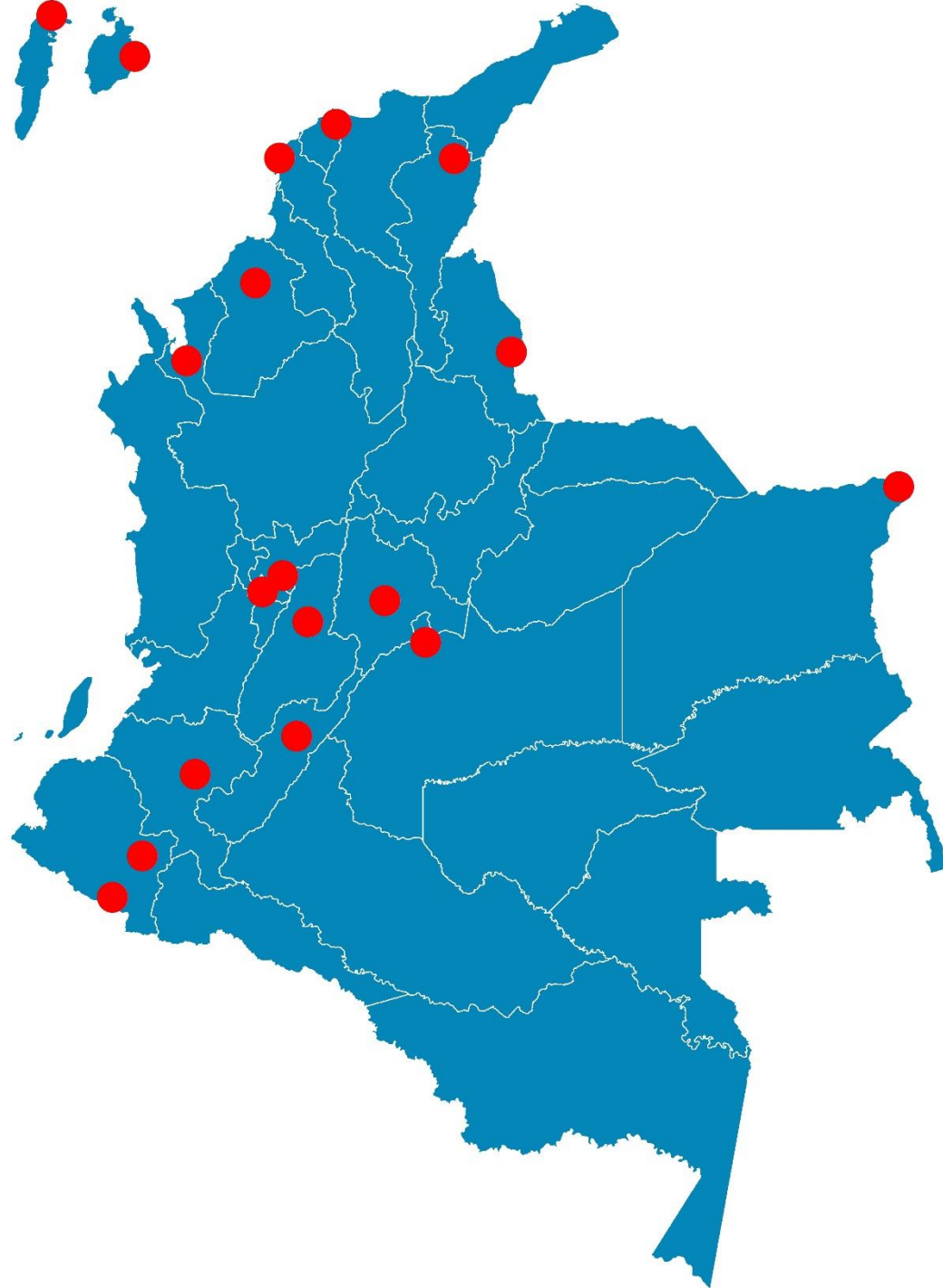


Noviembre
2020



Boletín Climatológico

Seguimiento Diario
de las Temperaturas Mínima, Media
y Máxima

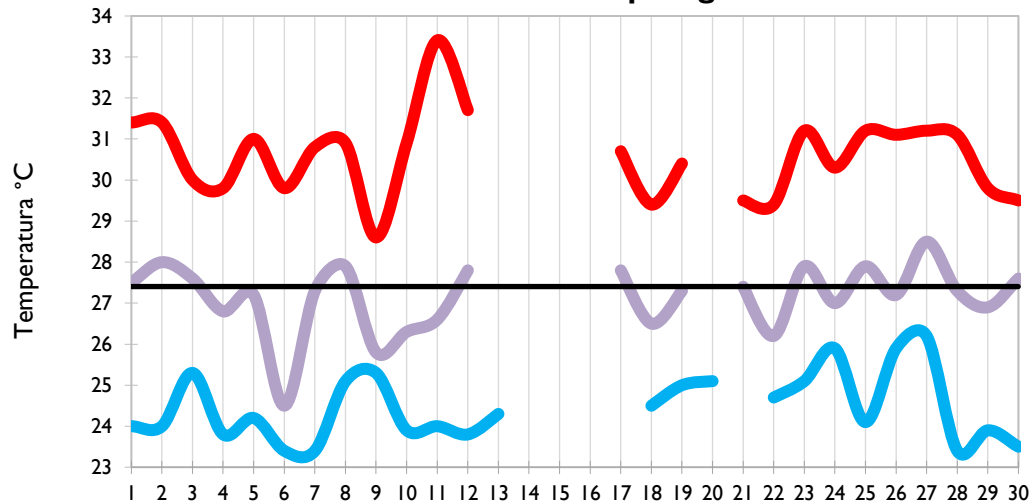
 Estaciones de
Seguimiento

Temperatura Mínima

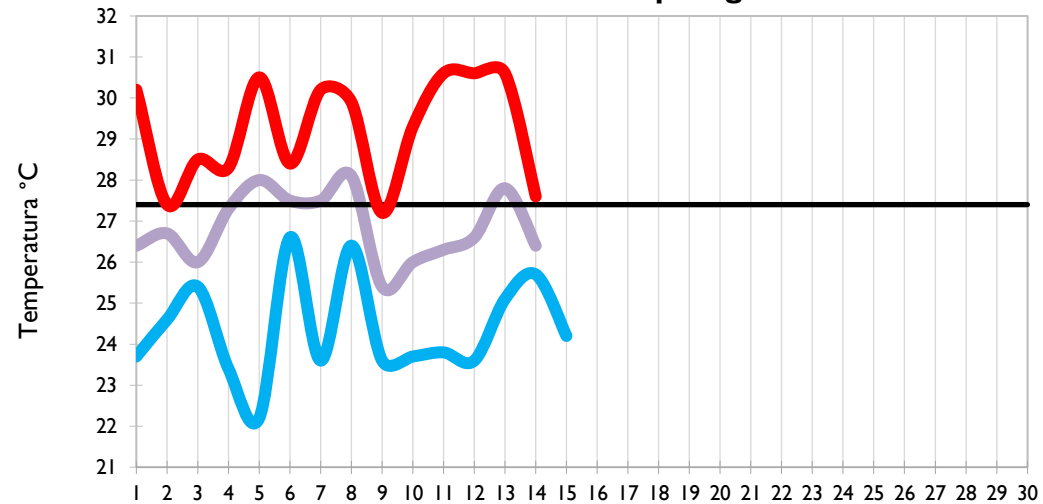
Temperatura Media

Temperatura Máxima

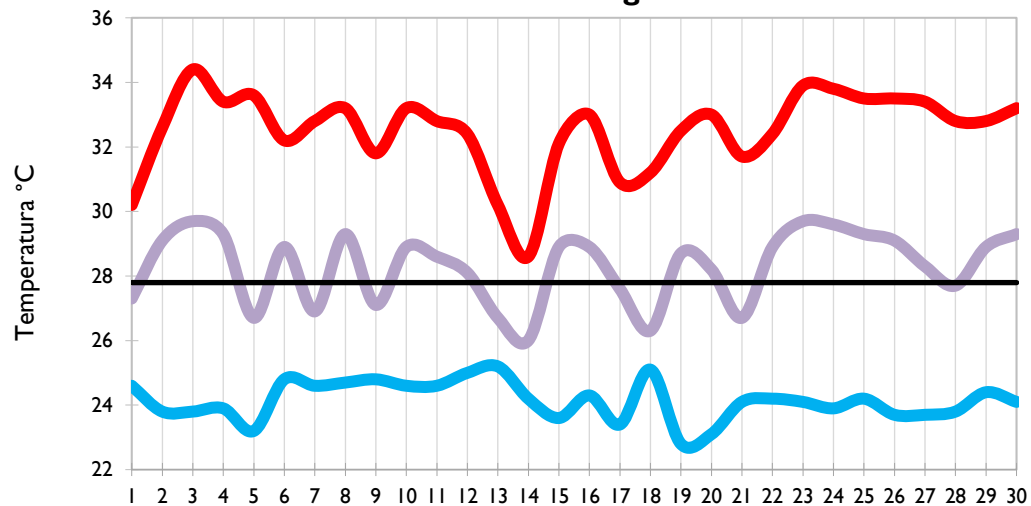
San Andrés - Archipiélago



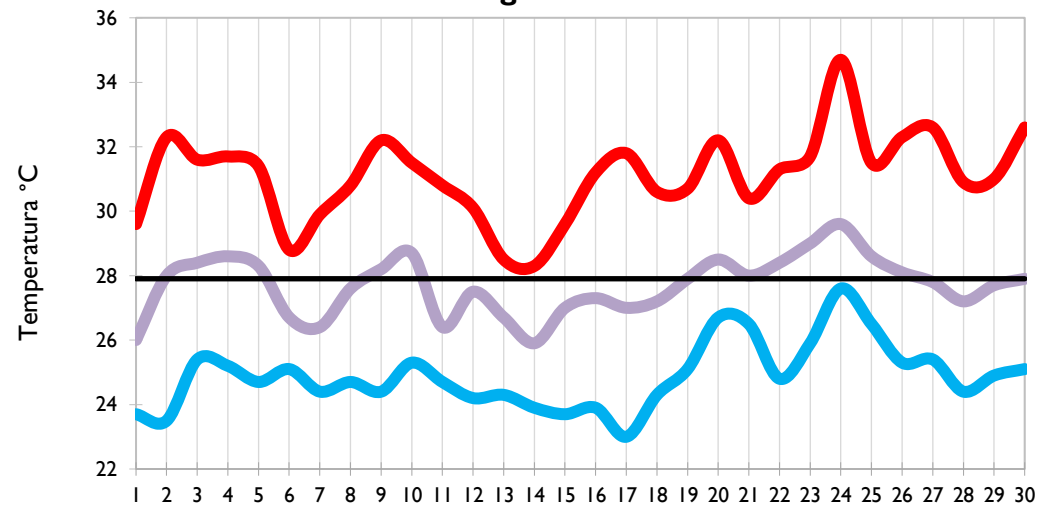
Providencia - Archipiélago



Santa Marta - Magdalena



Cartagena - Bolívar

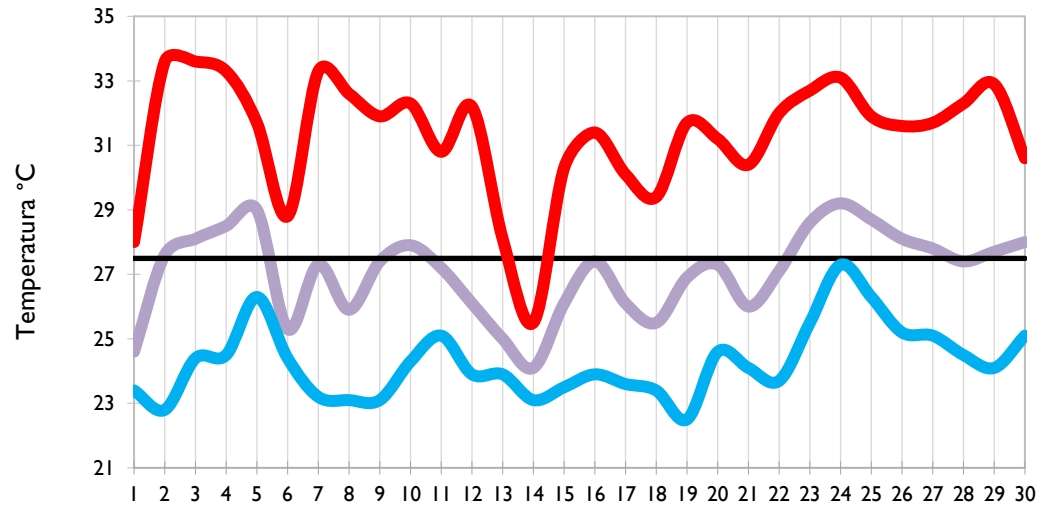


Temperatura Mínima

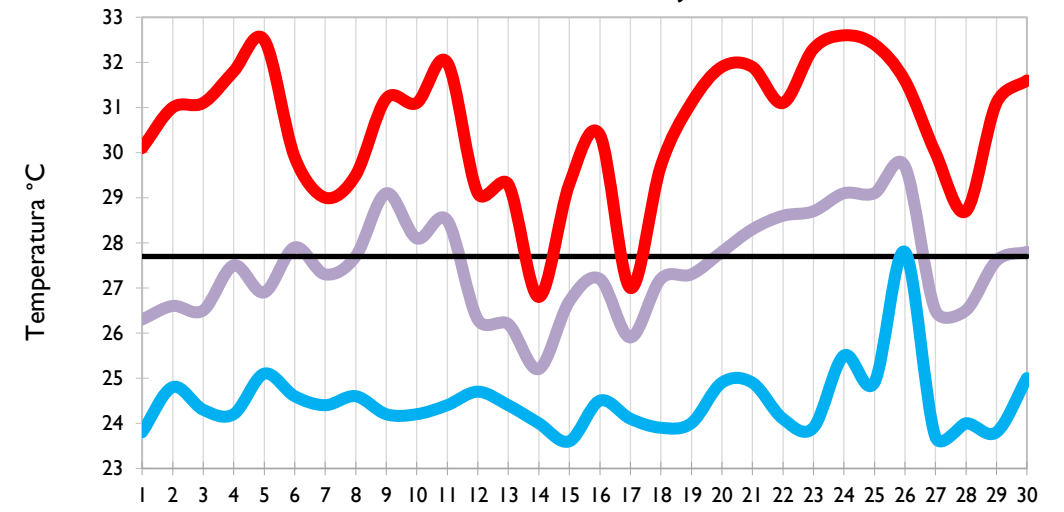
Temperatura Media

Temperatura Máxima

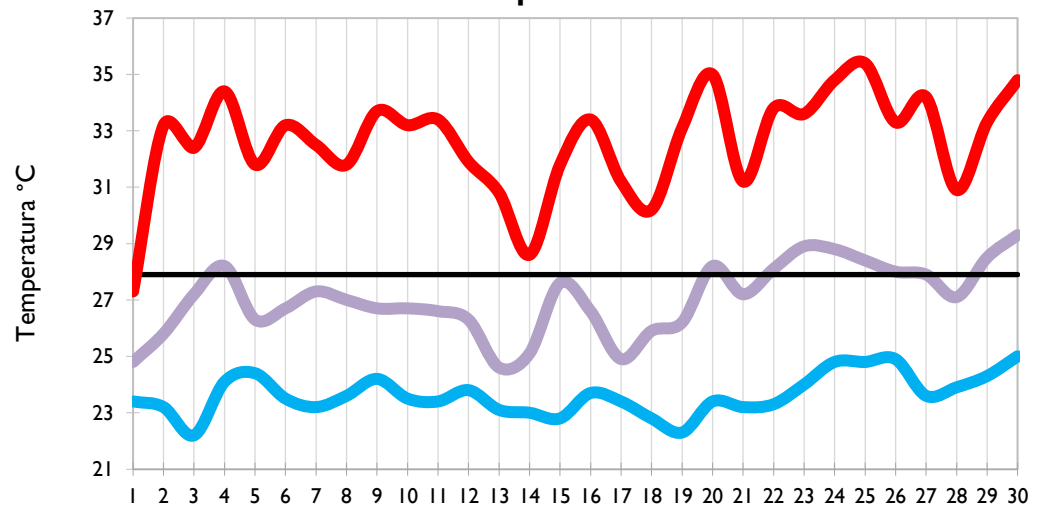
Soledad - Atlántico



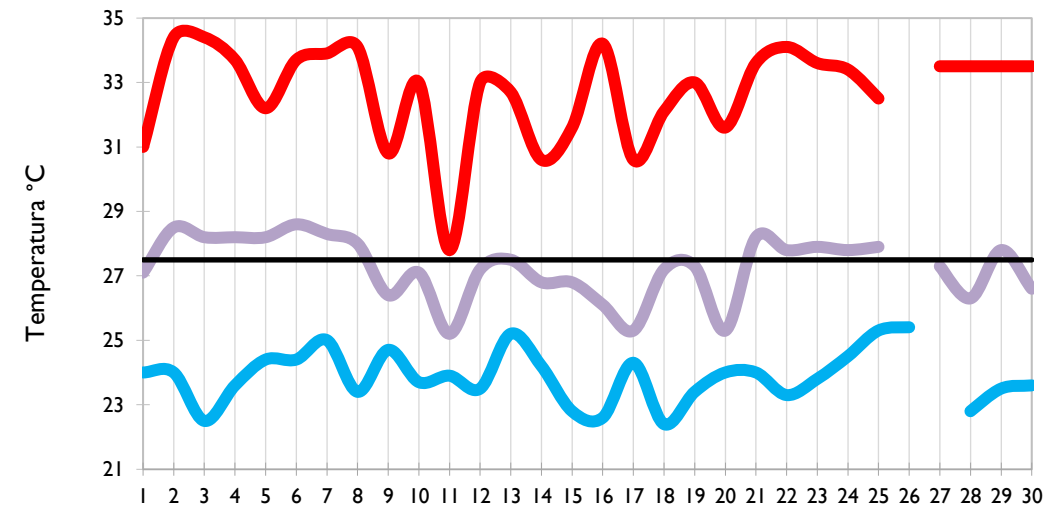
Riohacha - La Guajira



Valledupar - Cesar



Montería - Córdoba

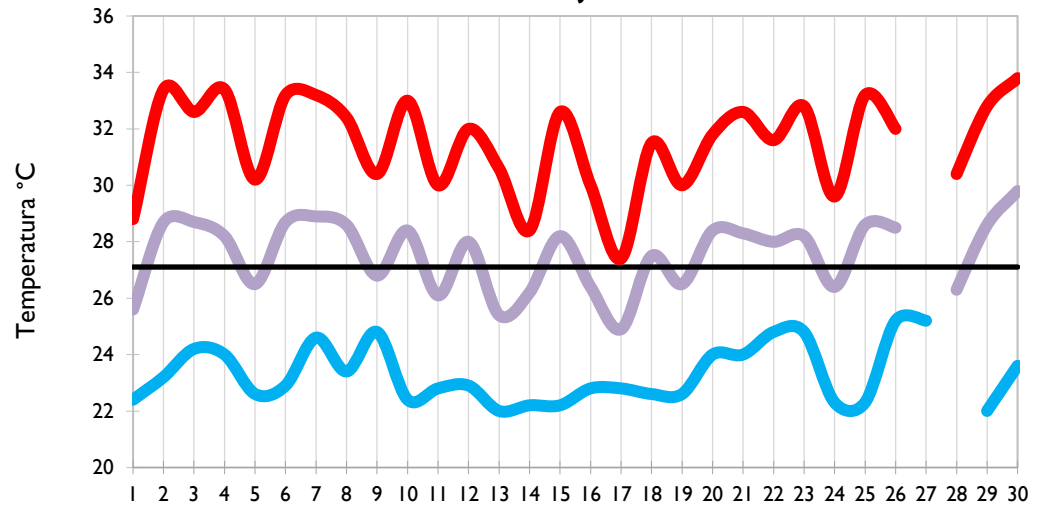


Temperatura Mínima

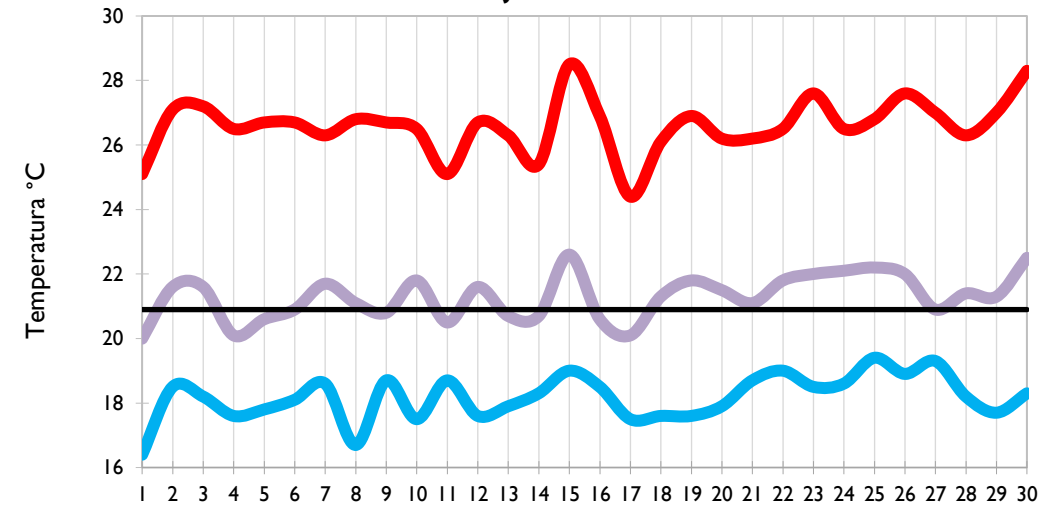
Temperatura Media

Temperatura Máxima

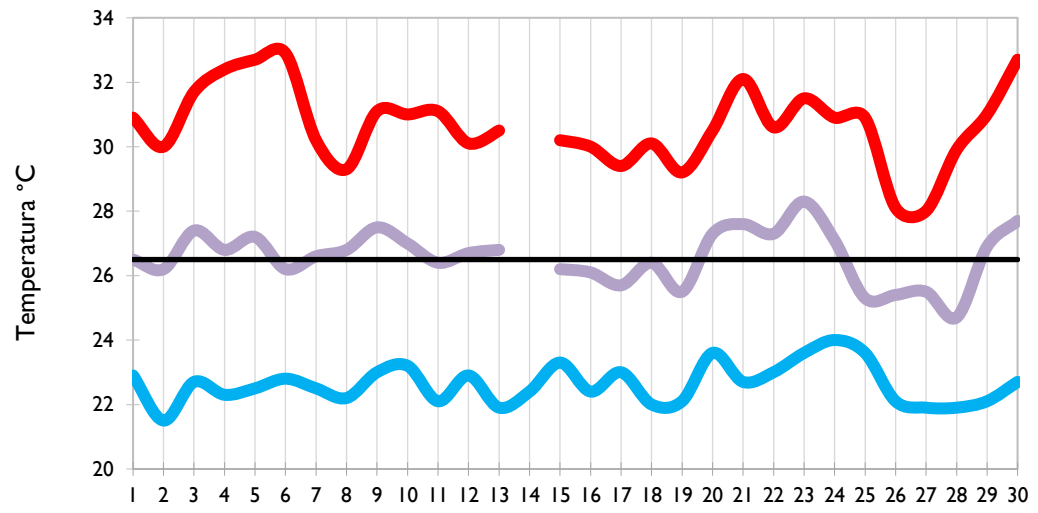
Barrancabermeja - Santander



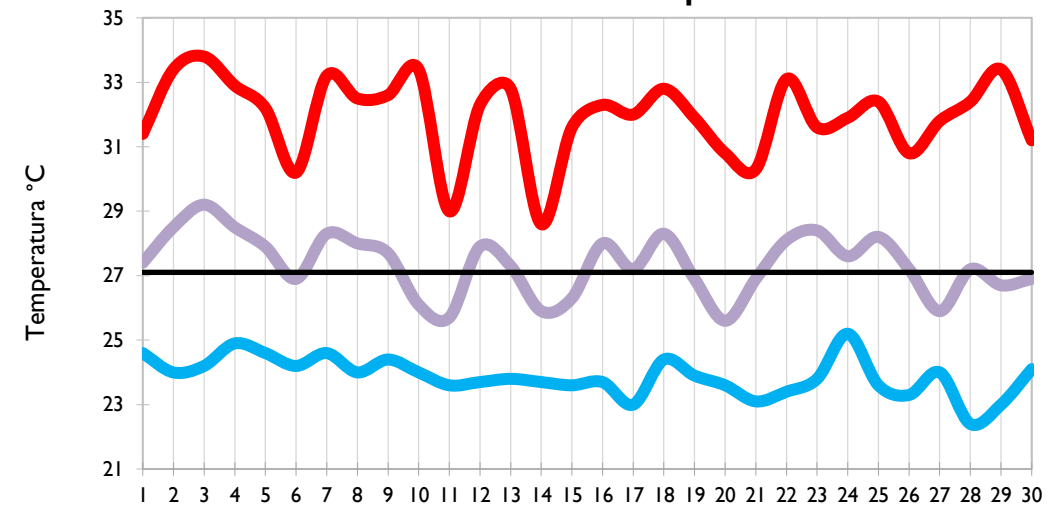
Lebrija - Santander



Cúcuta - Norte de Santander



Los Cedros - Antioquia

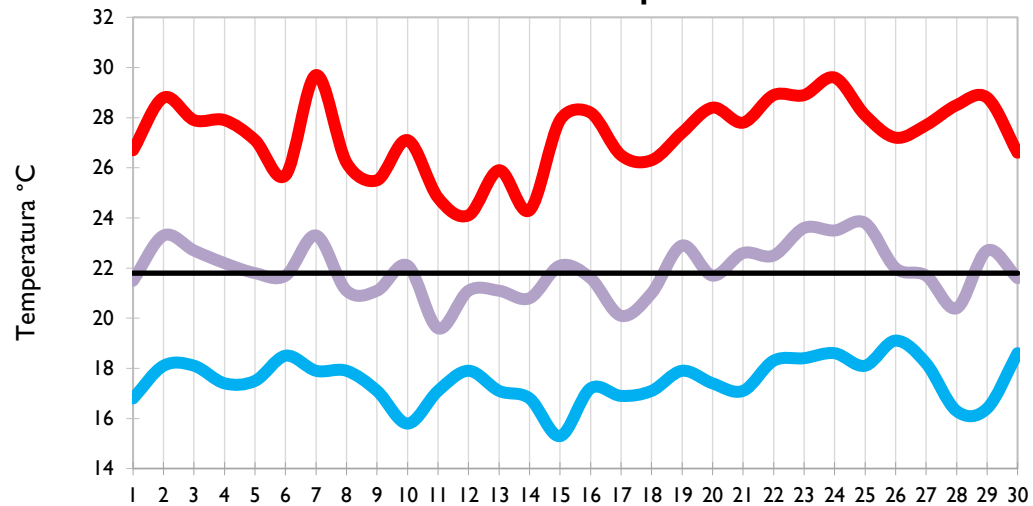


Temperatura Mínima

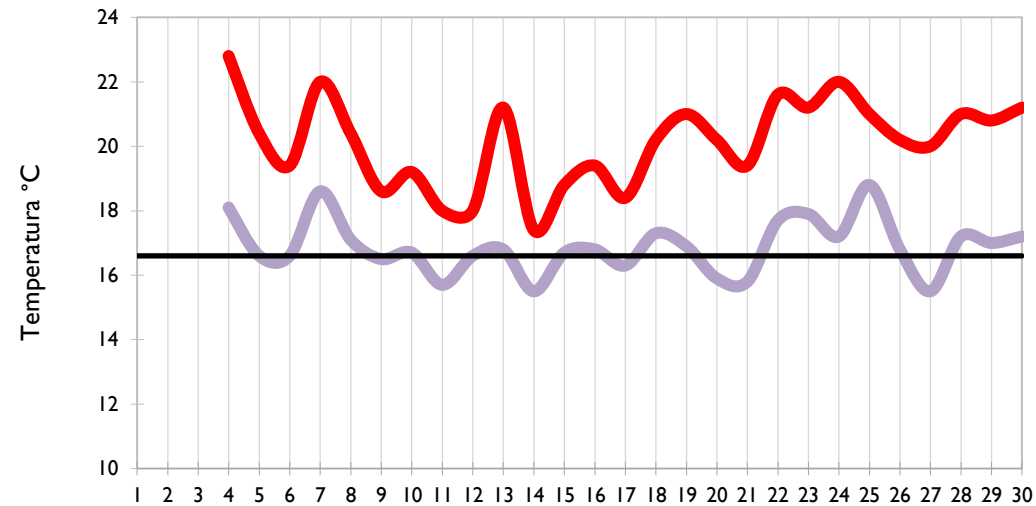
Temperatura Media

Temperatura Máxima

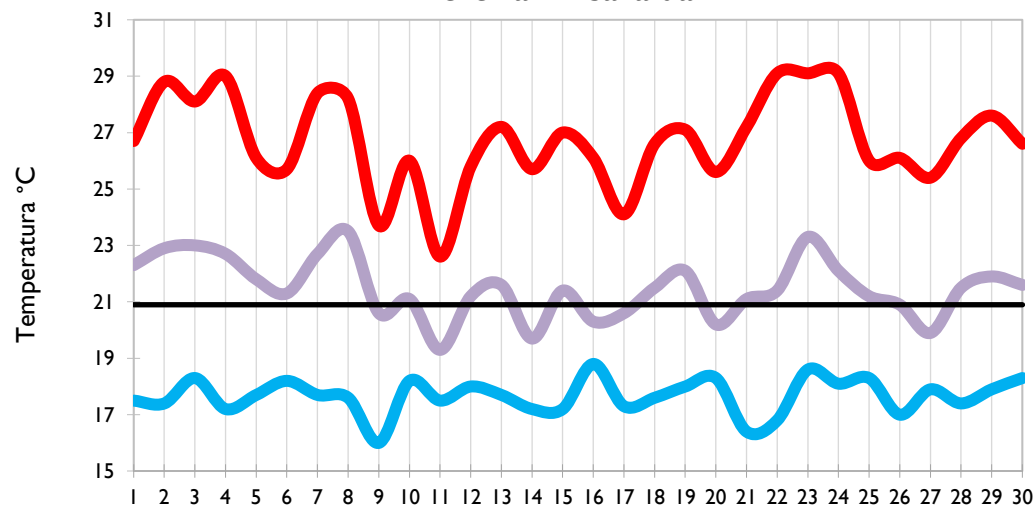
Medellín - Antioquia



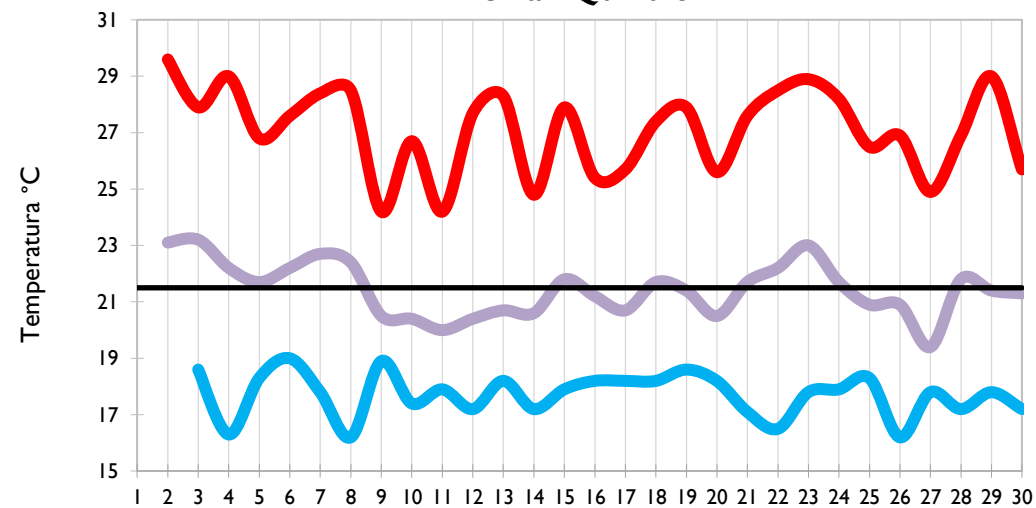
Manizales - Caldas



Pereira - Risaralda



Armenia - Quindío

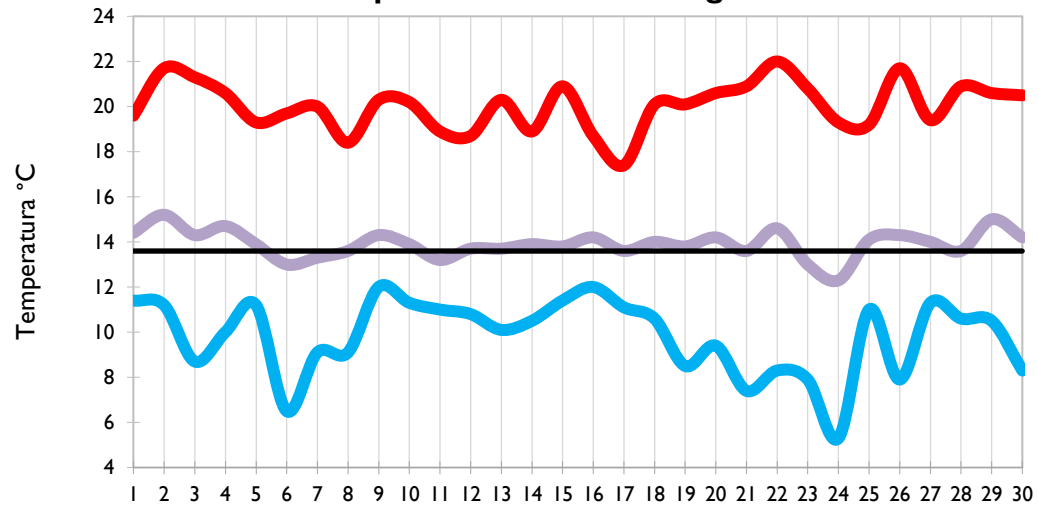


Temperatura Mínima

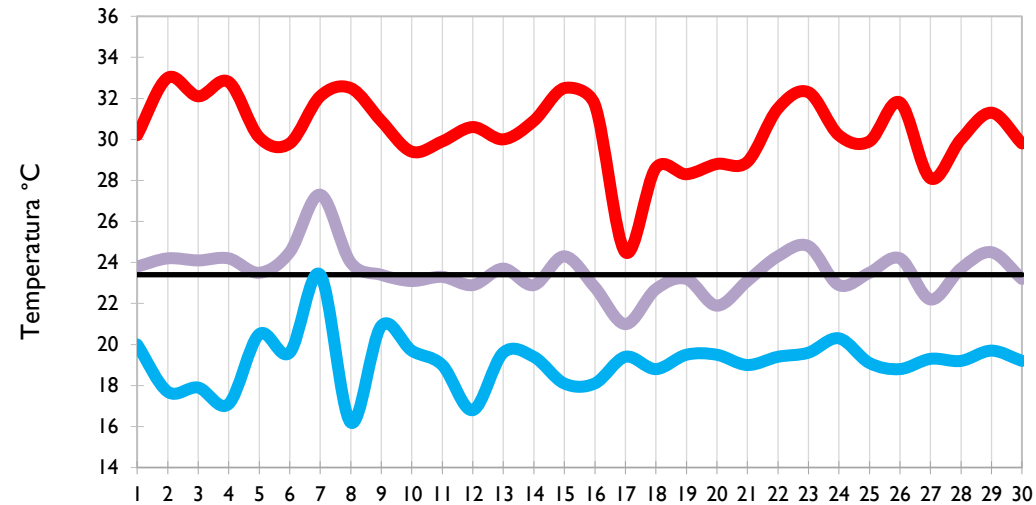
Temperatura Media

Temperatura Máxima

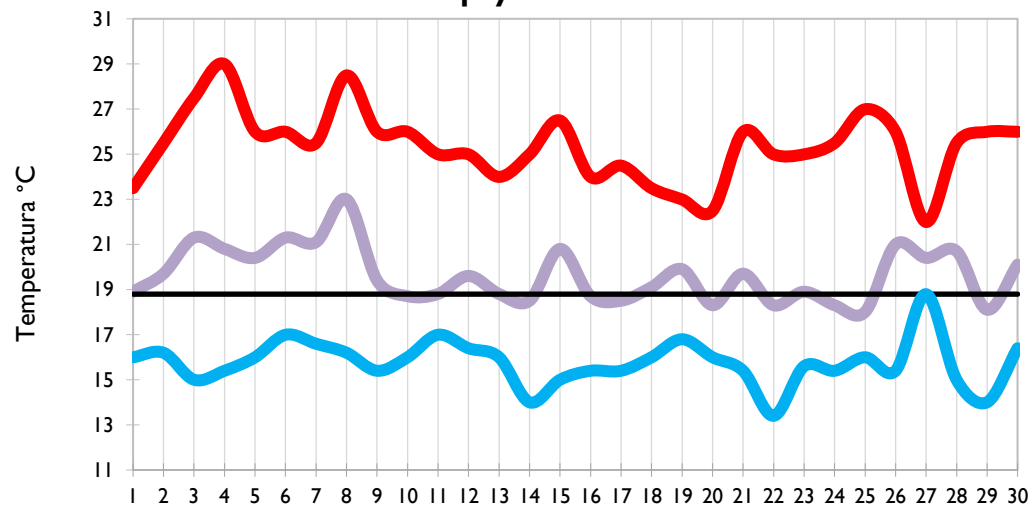
Aeropuerto El Dorado - Bogotá D. C.



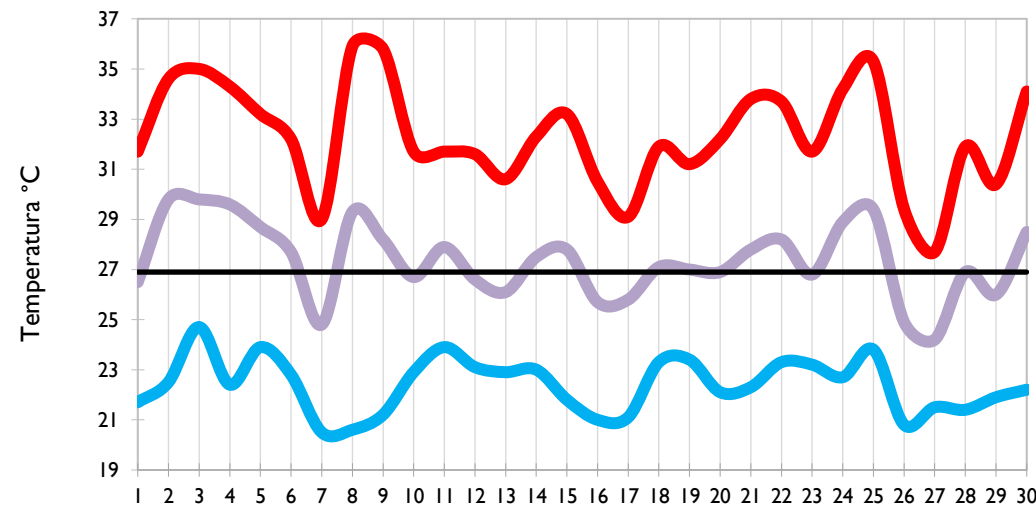
Palmira - Valle del Cauca



Popayán - Cauca



Neiva - Huila

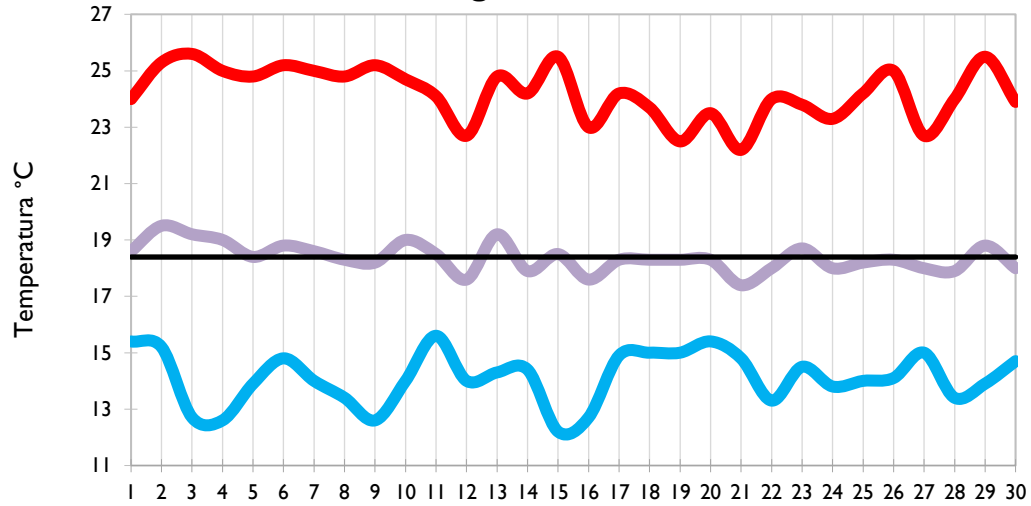


Temperatura Mínima

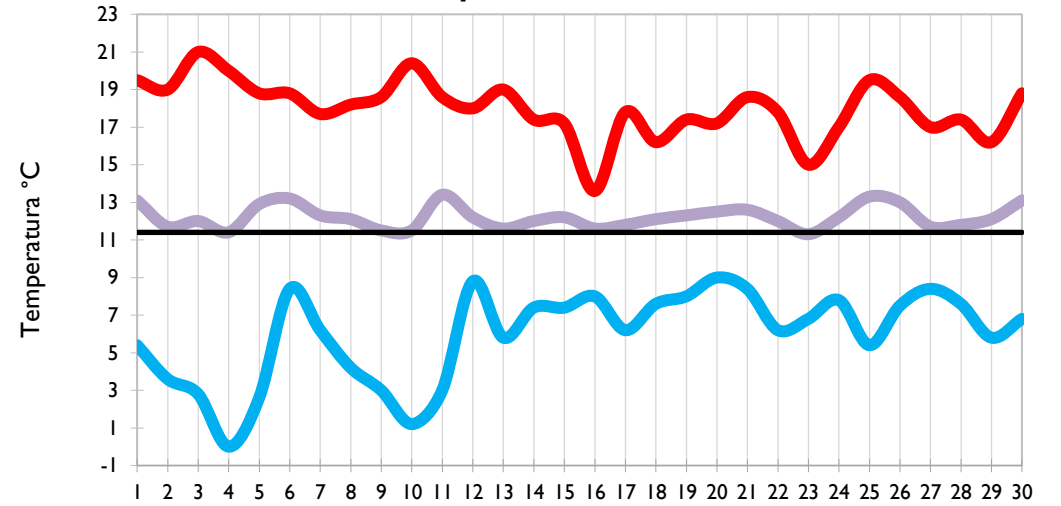
Temperatura Media

Temperatura Máxima

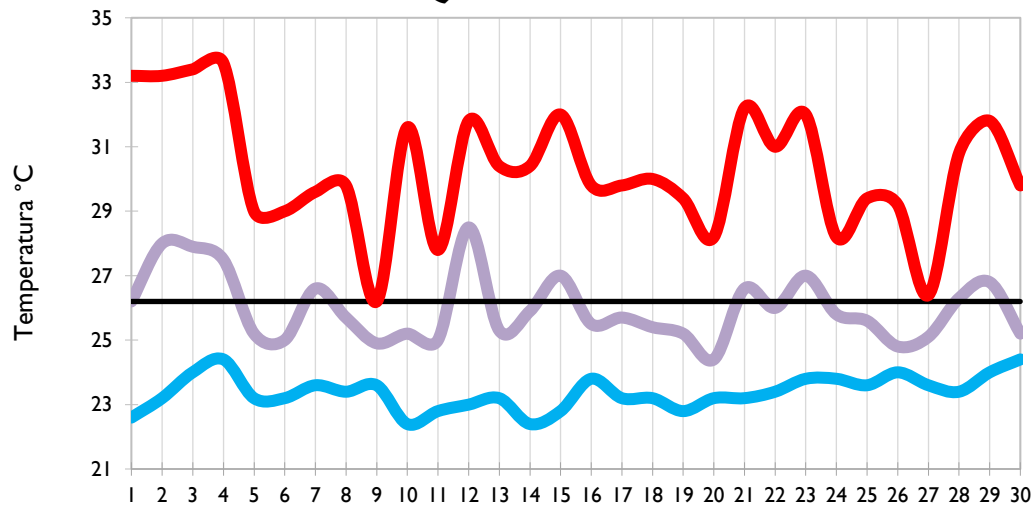
Chachagüi - Nariño



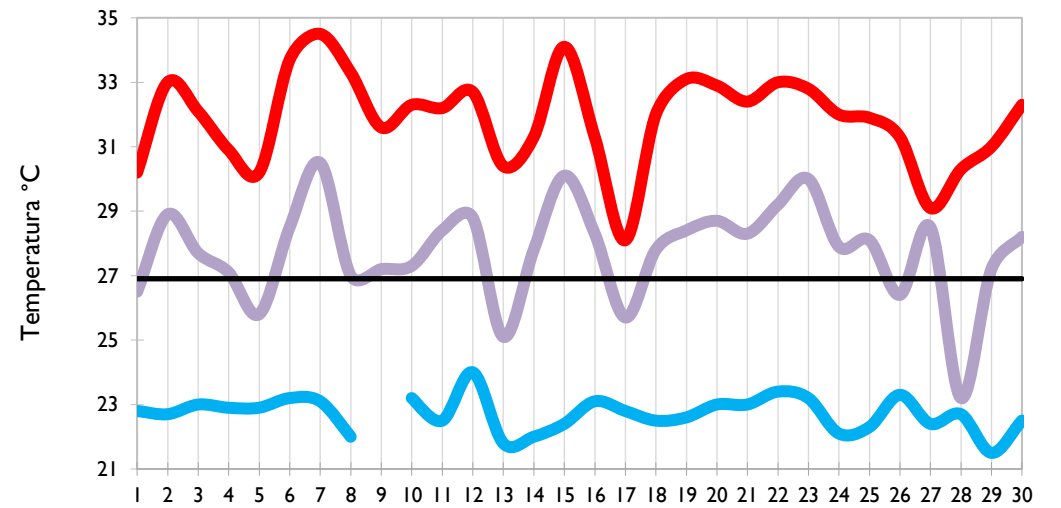
Ipiales - Nariño



Quibdó - Chocó



Arauca - Arauca

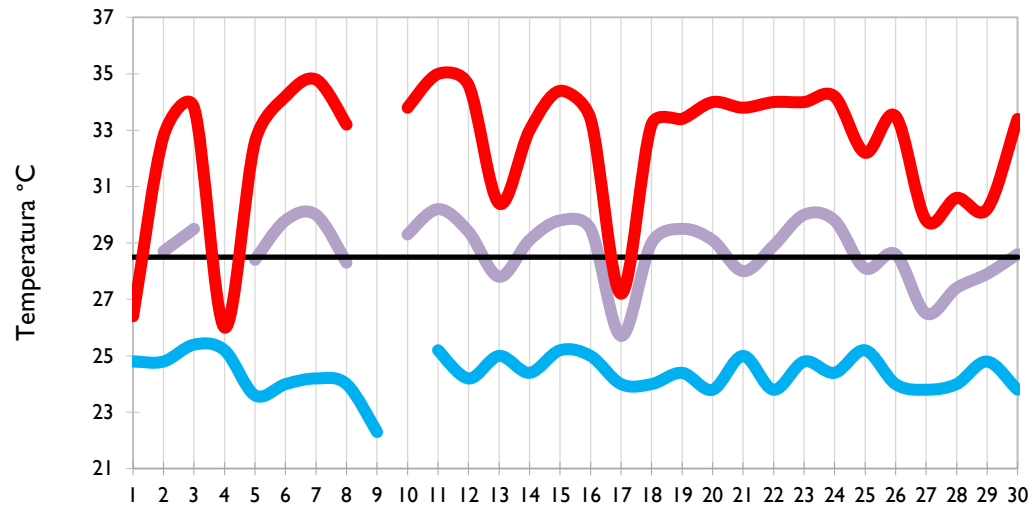


Temperatura Mínima

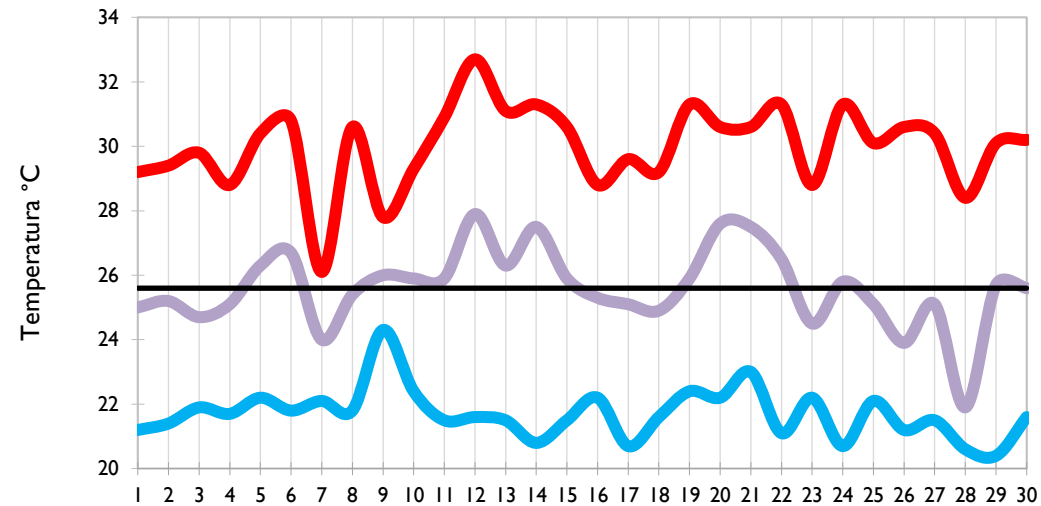
Temperatura Media

Temperatura Máxima

Puerto Carreño - Vichada



Villavicencio - Meta



Leticia - Amazonas

