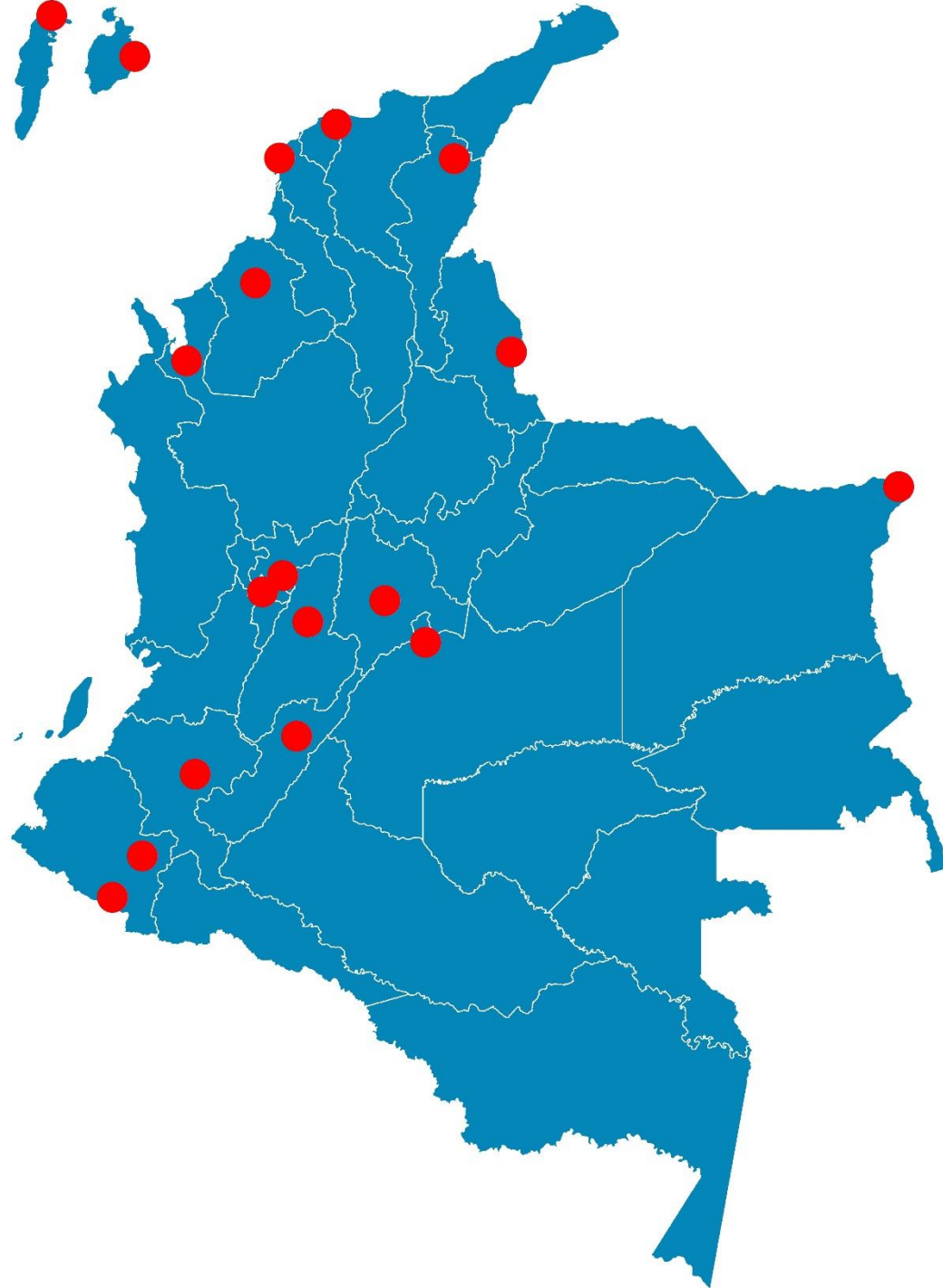


Julio
2020



Boletín Climatológico

Seguimiento Diario
de las Temperaturas Mínima, Media
y Máxima

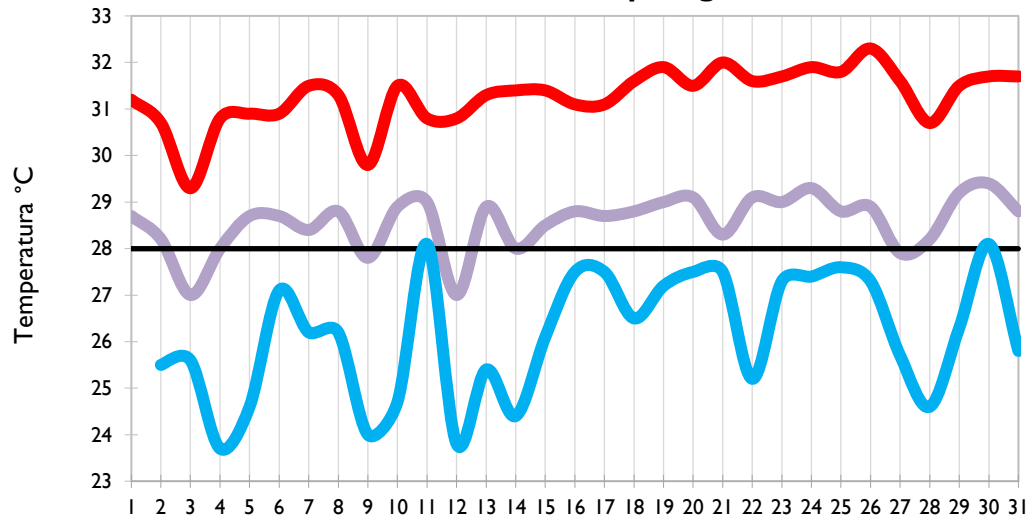
 Estaciones de
Seguimiento

Temperatura Mínima

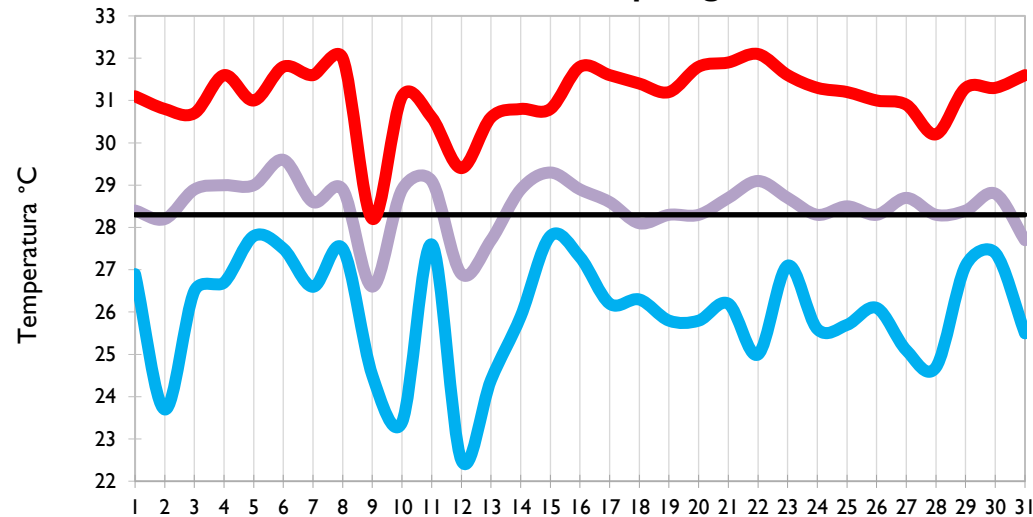
Temperatura Media

Temperatura Máxima

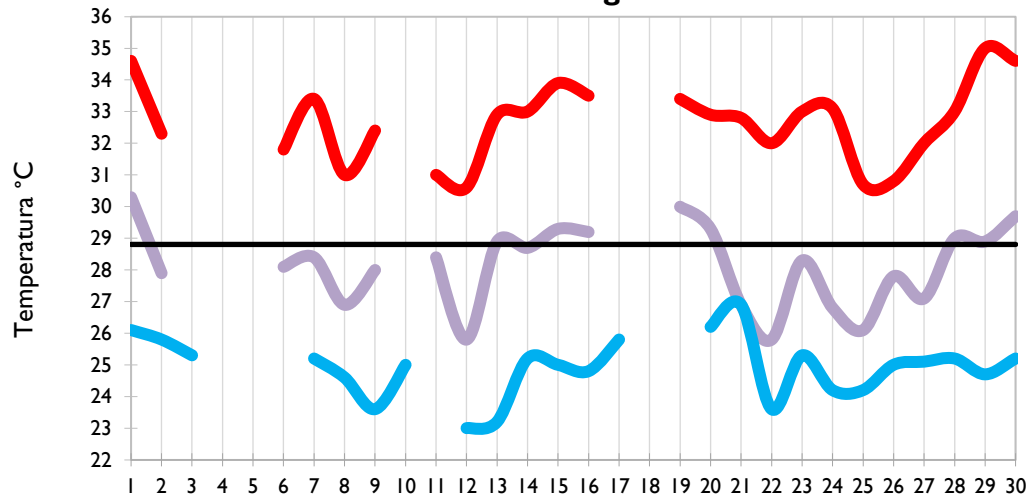
San Andrés - Archipiélago



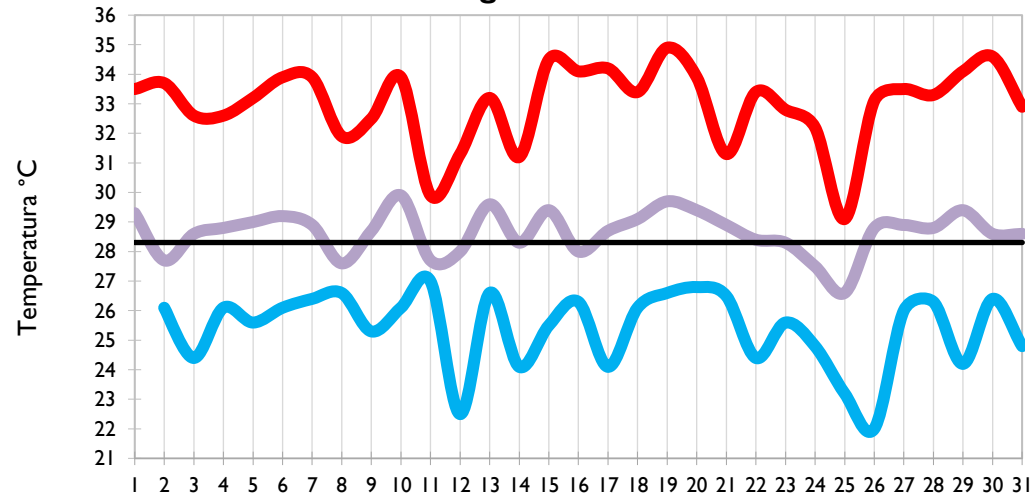
Providencia - Archipiélago



Santa Marta - Magdalena



Cartagena - Bolívar

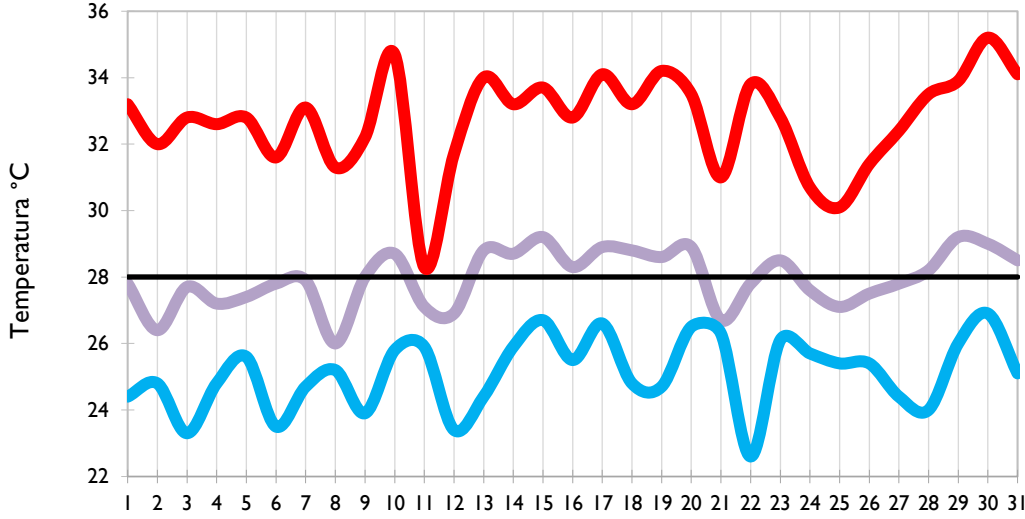


Temperatura Mínima

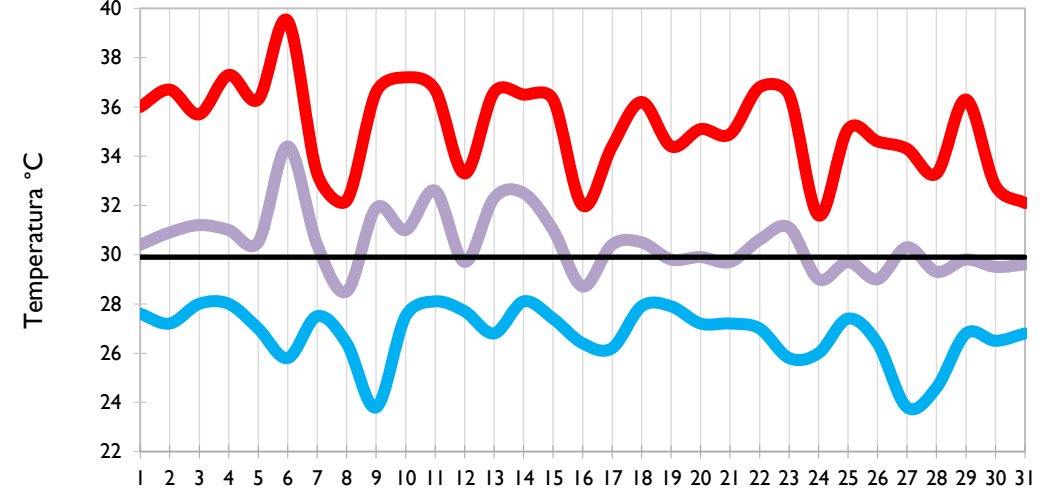
Temperatura Media

Temperatura Máxima

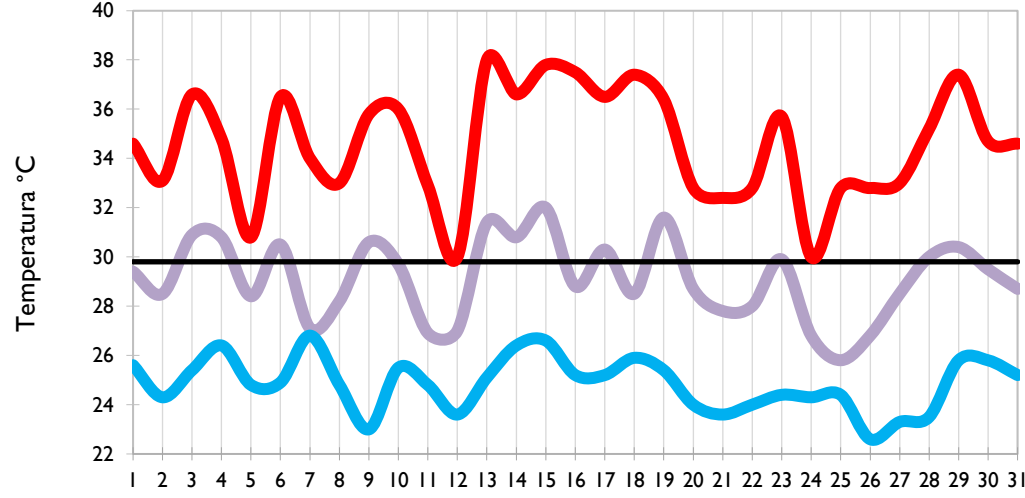
Soledad - Atlántico



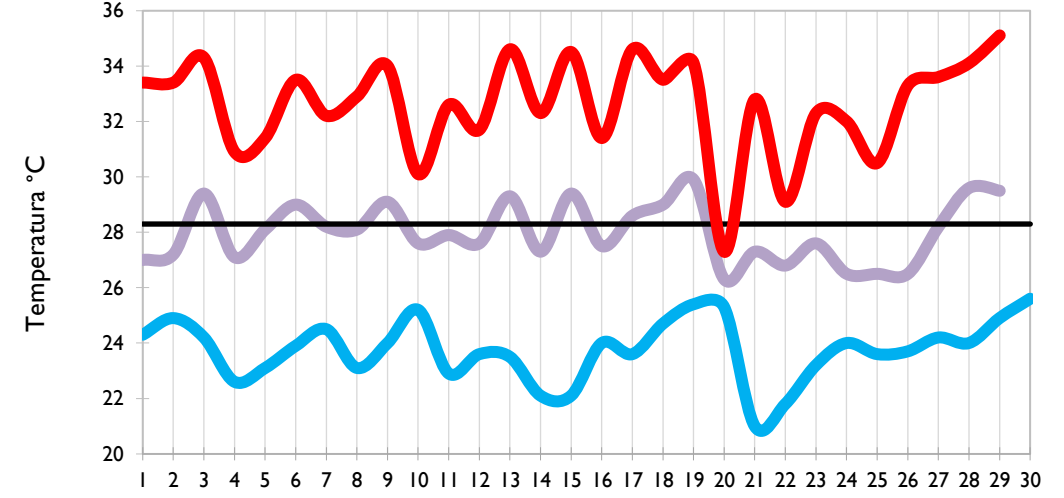
Riohacha - La Guajira



Valledupar - Cesar



Montería - Córdoba

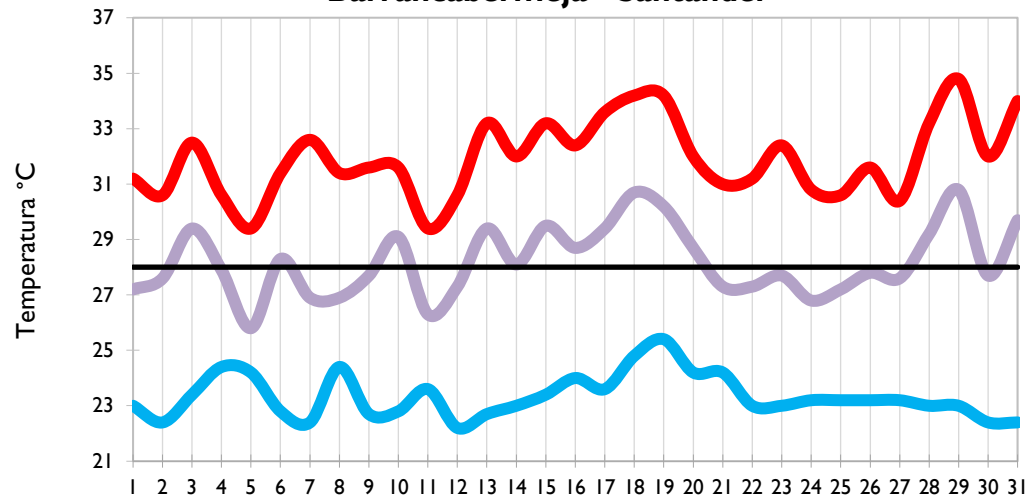


Temperatura Mínima

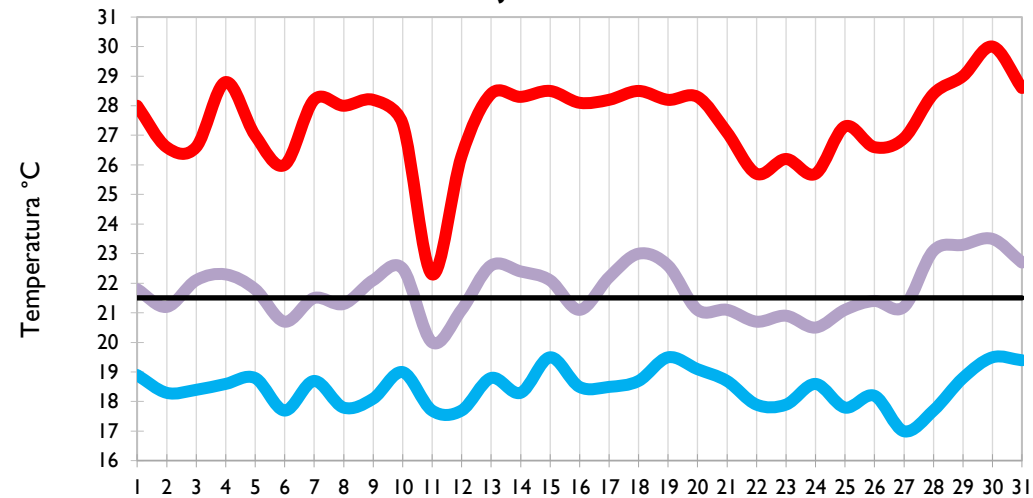
Temperatura Media

Temperatura Máxima

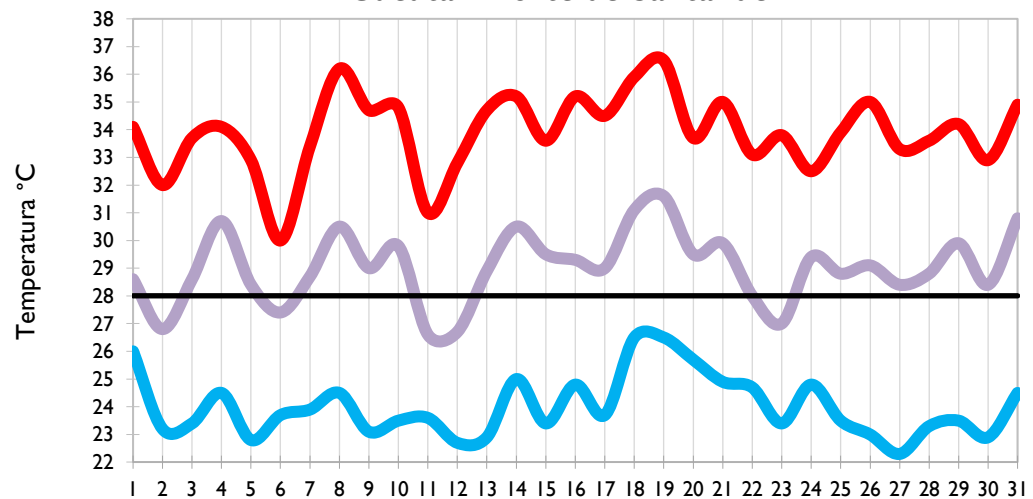
Barrancabermeja - Santander



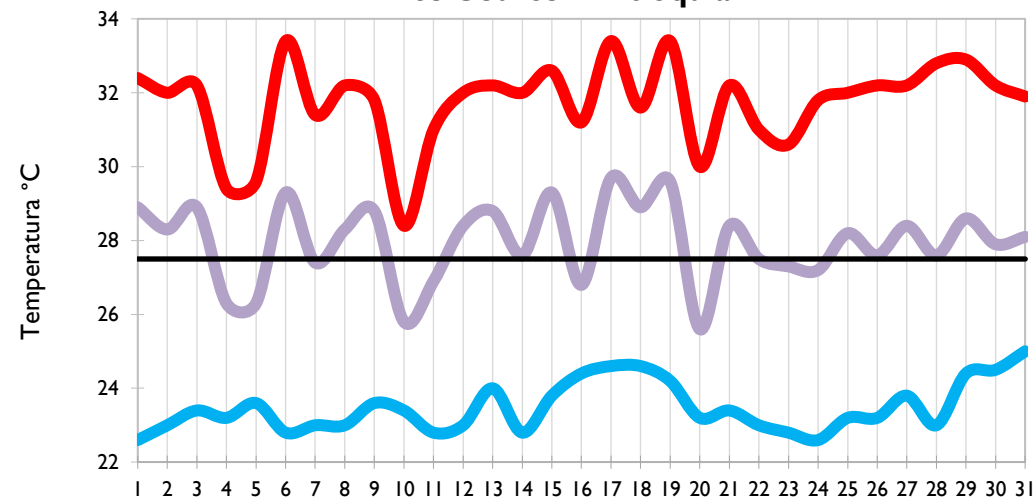
Lebrija - Santander



Cúcuta - Norte de Santander



Los Cedros - Antioquia

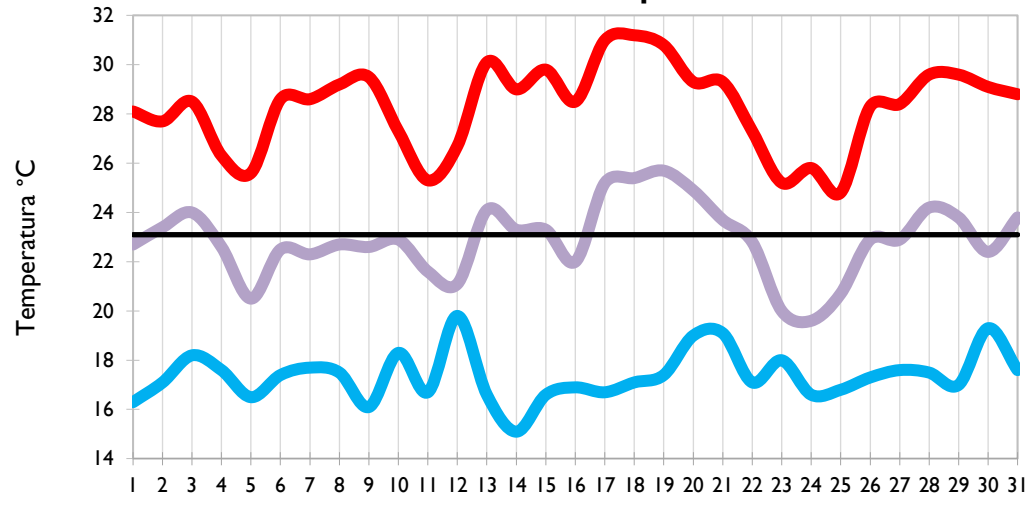


Temperatura Mínima

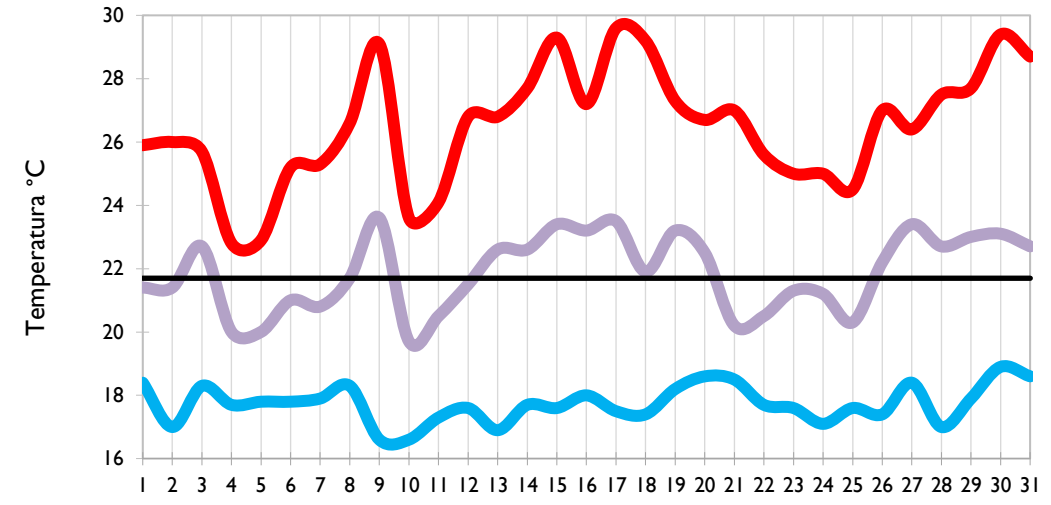
Temperatura Media

Temperatura Máxima

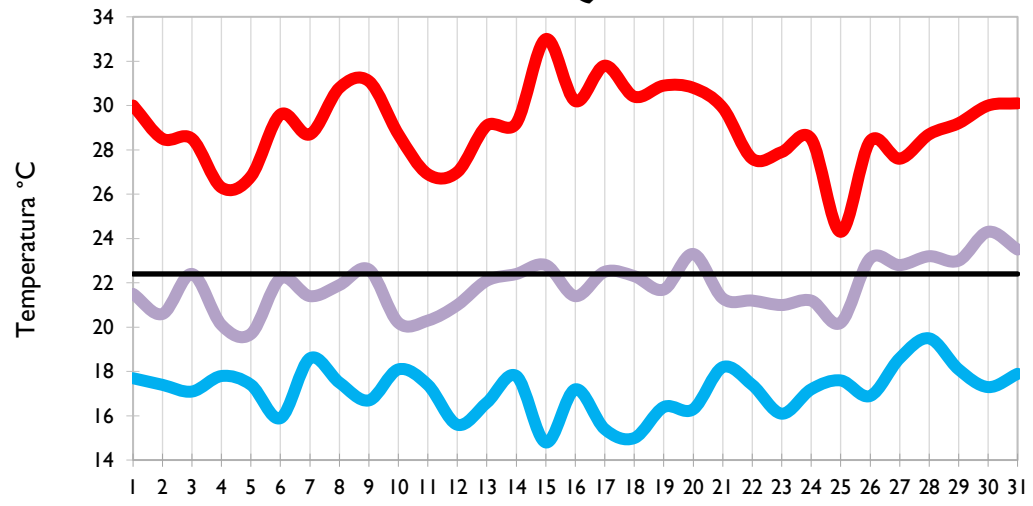
Medellín - Antioquia



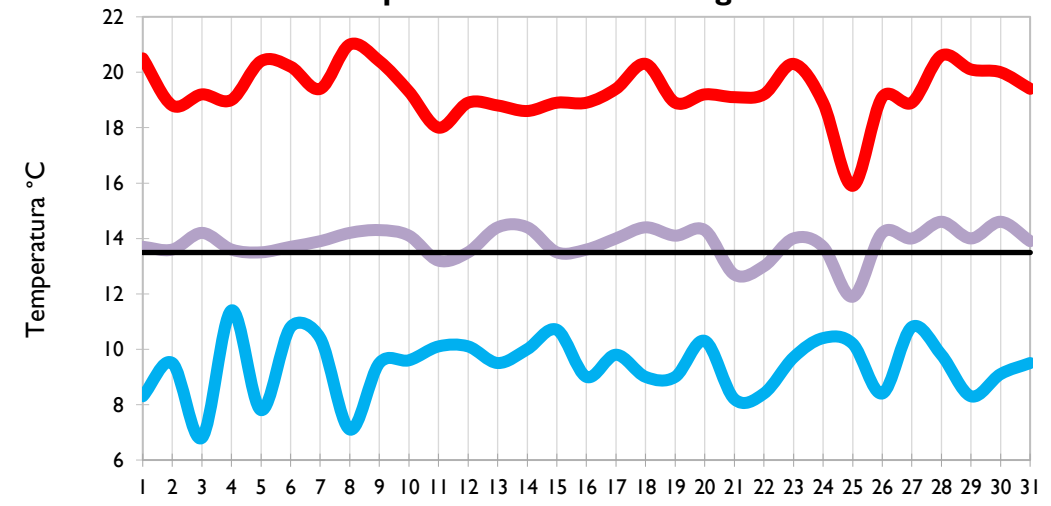
Pereira - Risaralda



Armenia - Quindío



Aeropuerto El Dorado - Bogotá D. C.

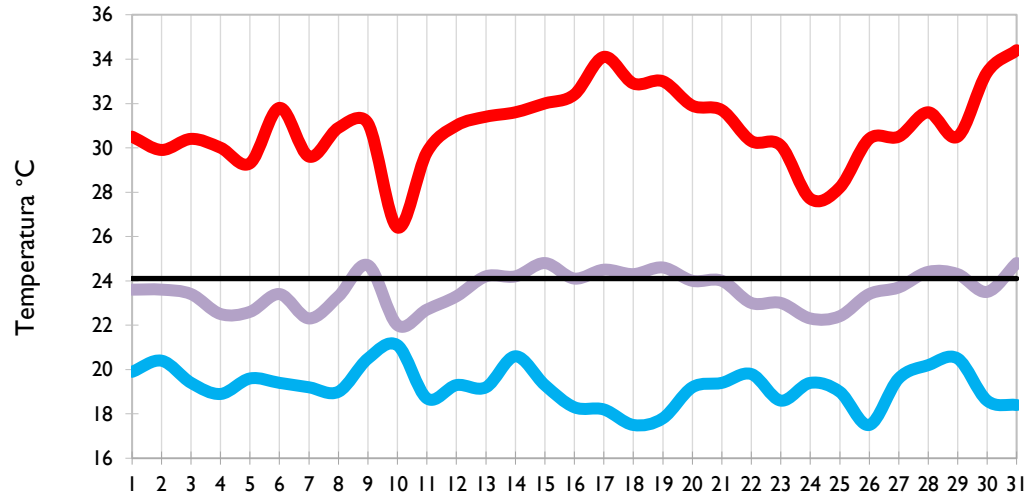


Temperatura Mínima

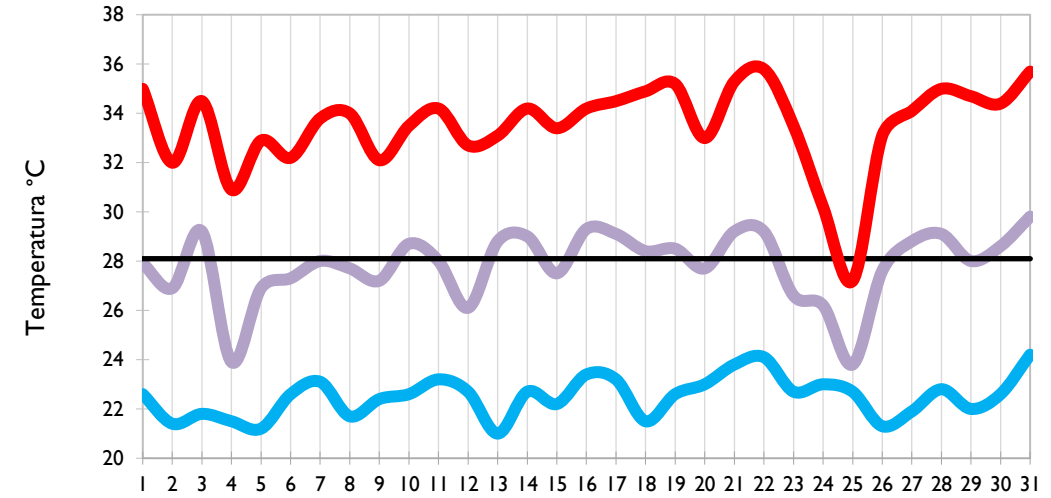
Temperatura Media

Temperatura Máxima

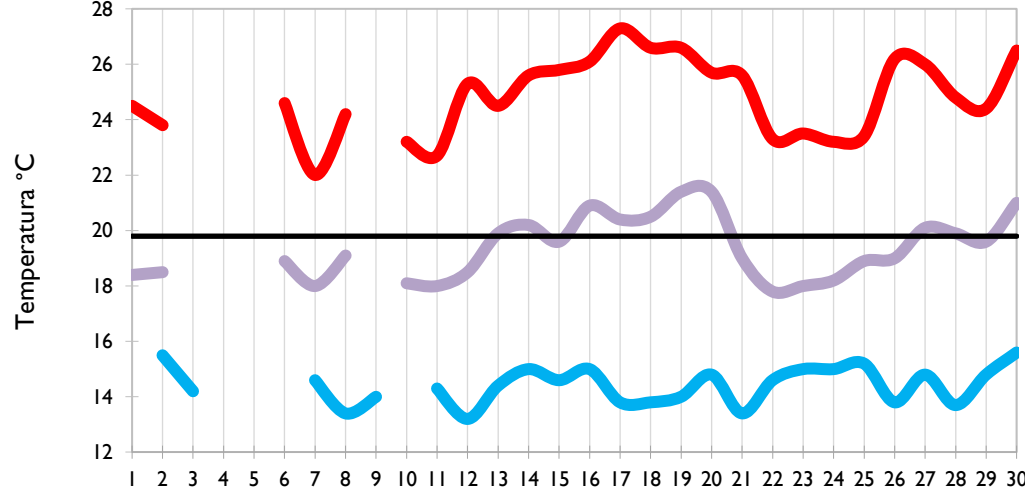
Palmira - Valle del Cauca



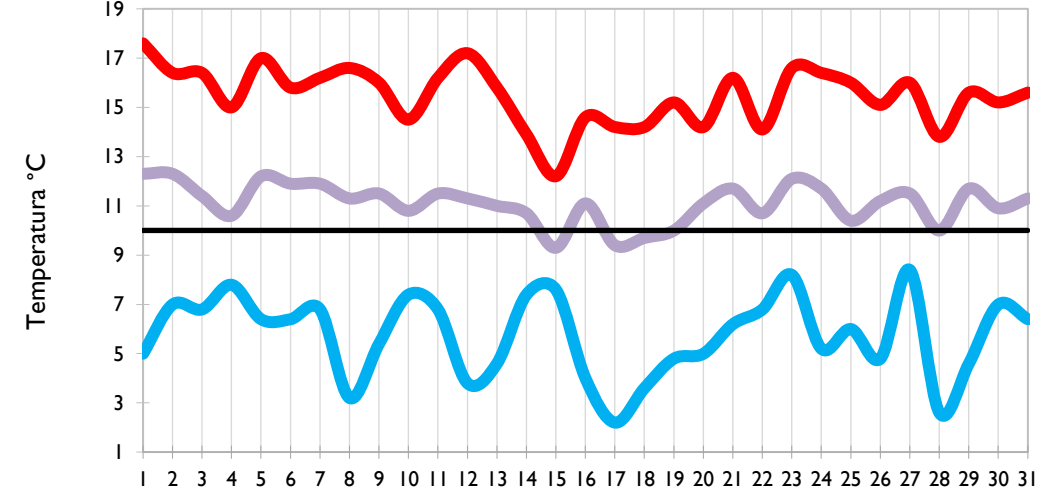
Neiva - Huila



Chachagüi - Nariño



Ipiales - Nariño

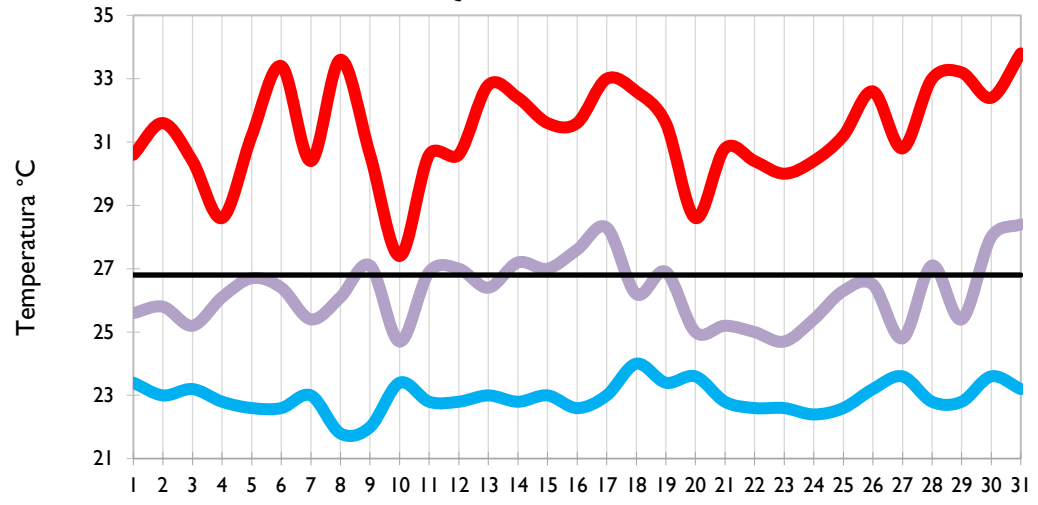


Temperatura Mínima

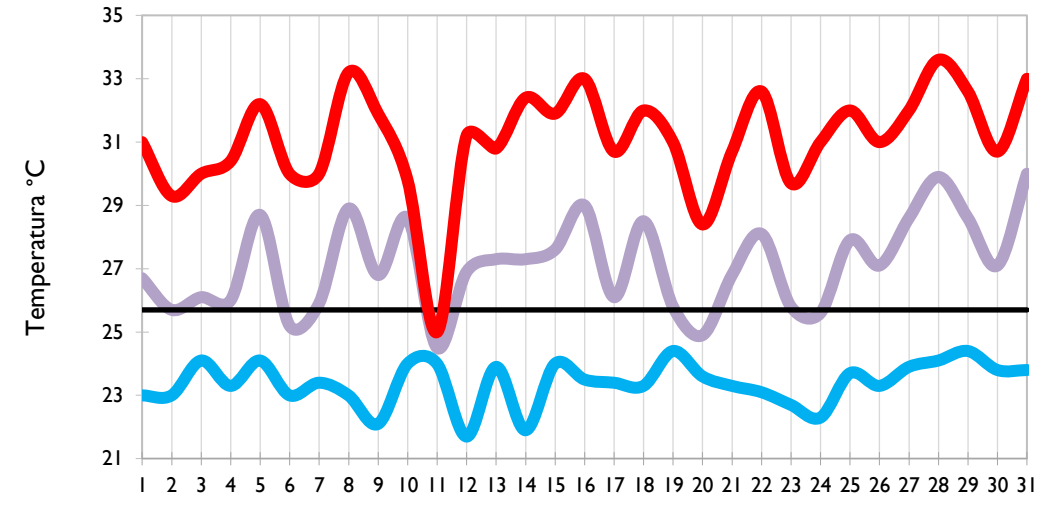
Temperatura Media

Temperatura Máxima

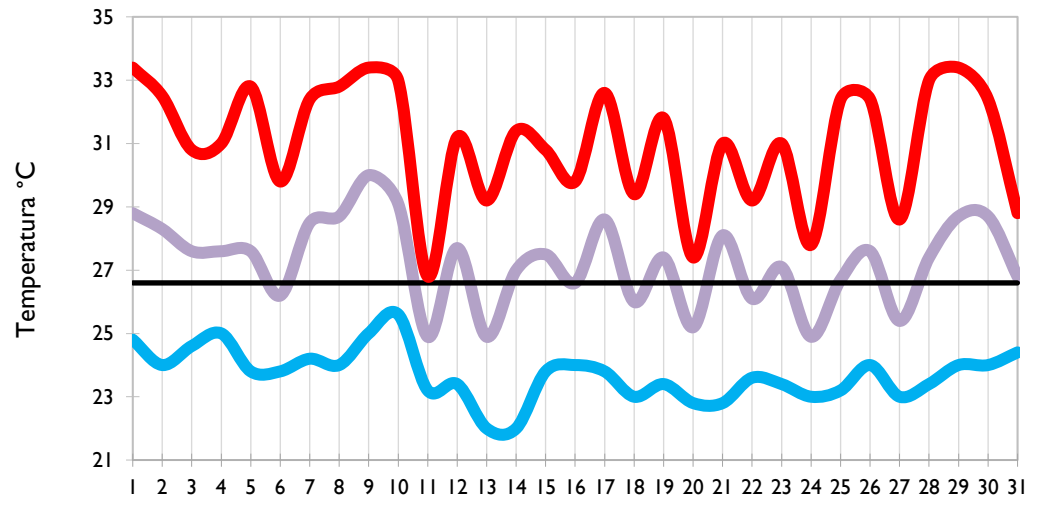
Quibdó - Chocó



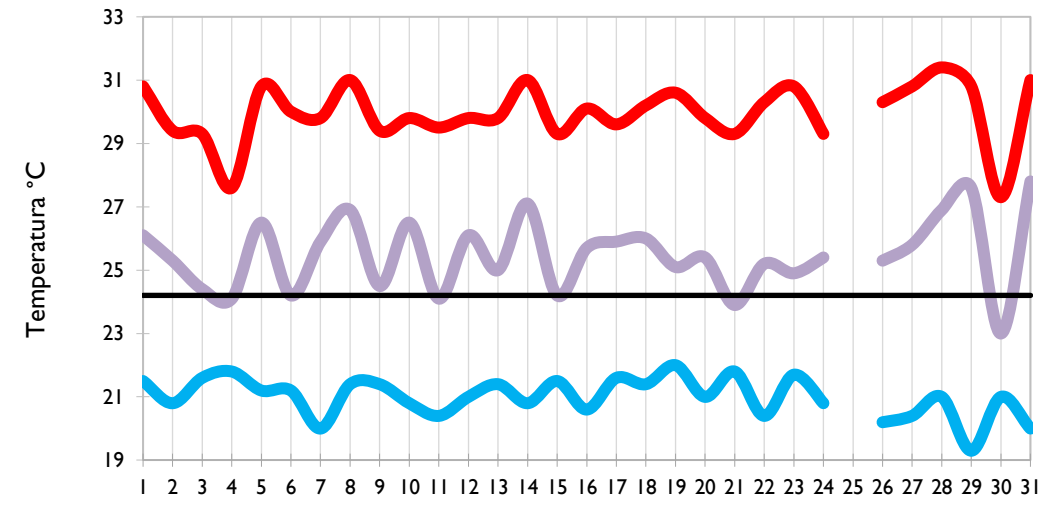
Arauca - Arauca



Puerto Carreño - Vichada



Villavicencio - Meta



Temperatura Mínima

Temperatura Media

Temperatura Máxima

Leticia - Amazonas

