

Enero
2020



Boletín Climatológico

Seguimiento Mensual
de la Precipitación

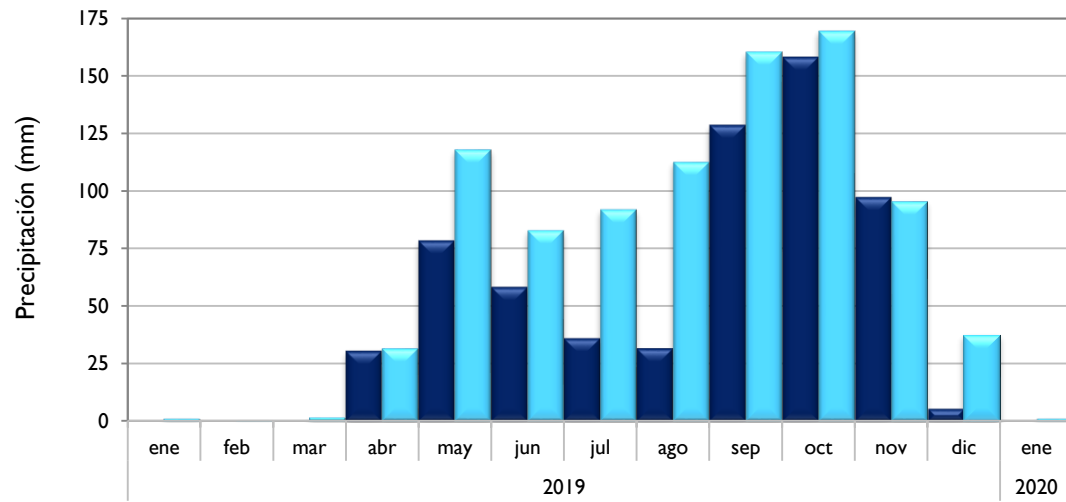
 Estaciones de
Seguimiento

■ Observado 2018

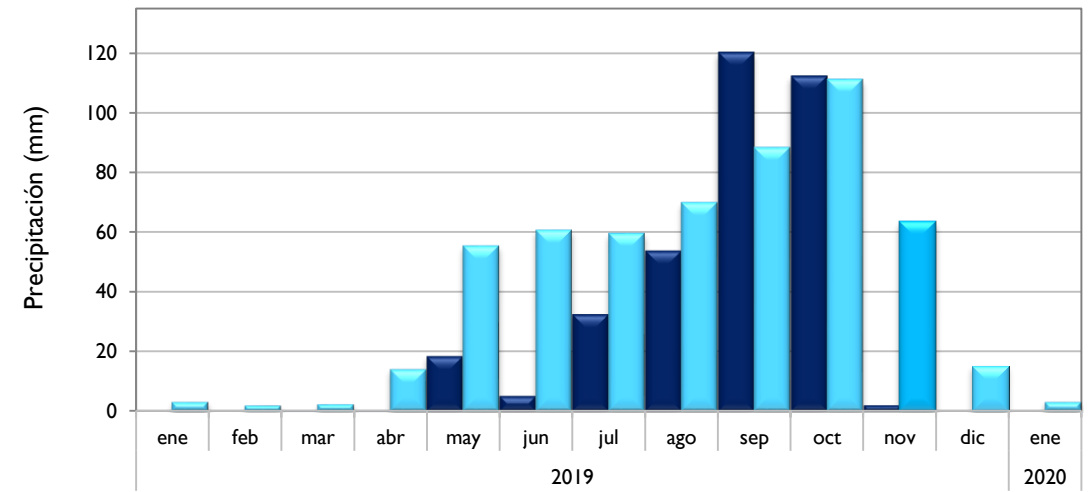
■ Observado 2020

■ Climatología

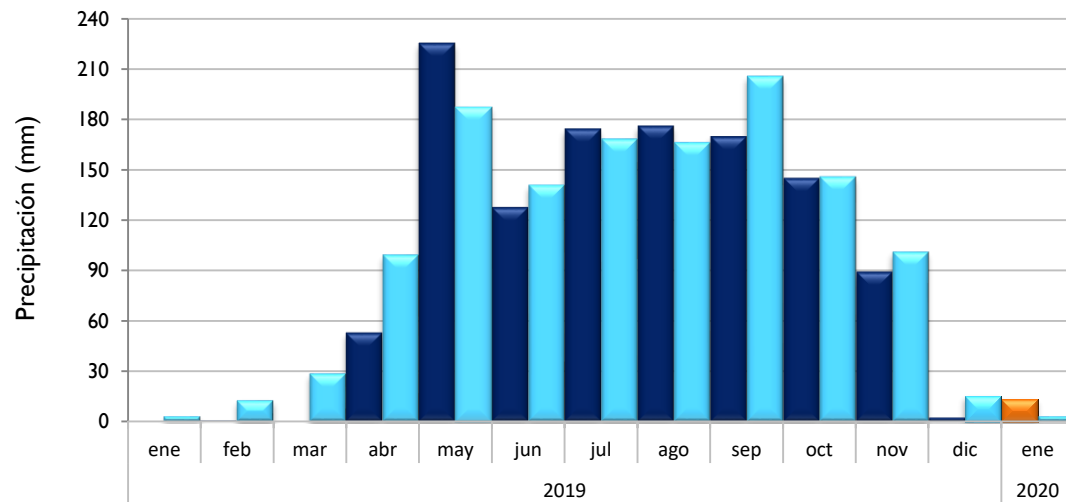
Soledad - Atlántico



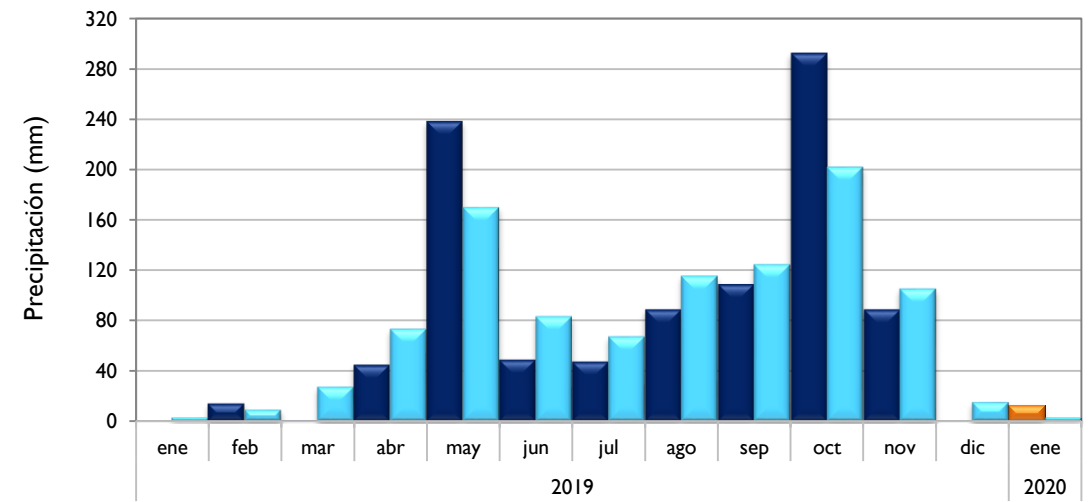
Santa Marta - Magdalena



Montería - Córdoba



Valledupar - Cesar

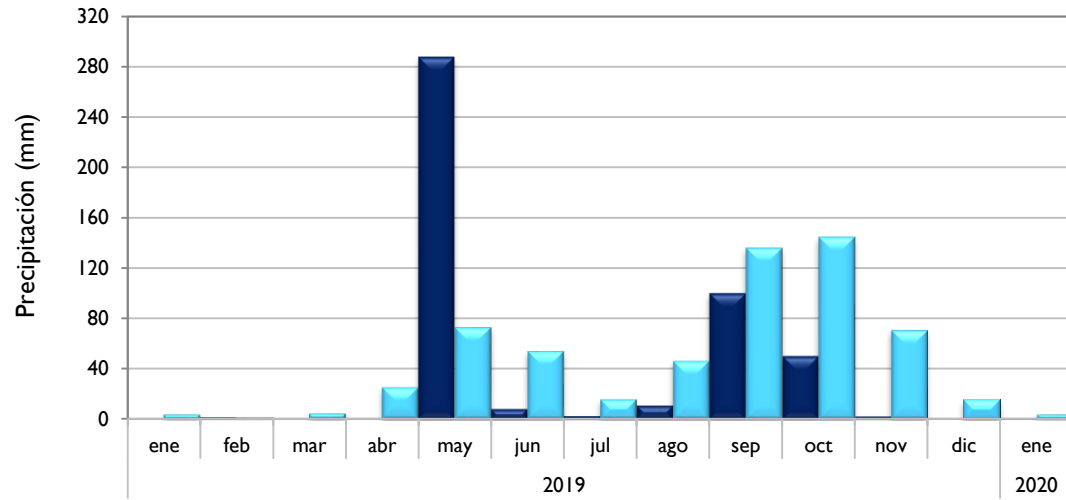


■ Observado 2018

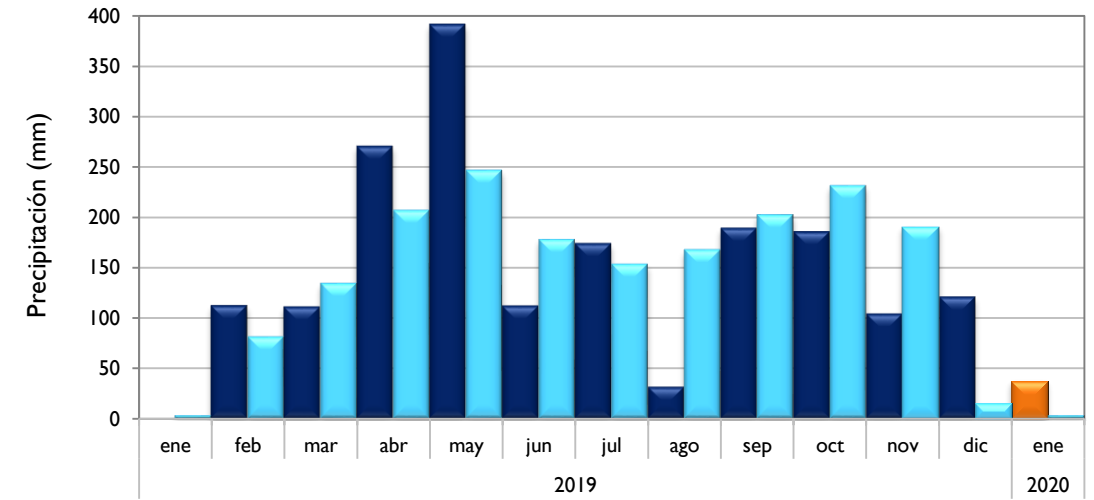
■ Observado 2020

■ Climatología

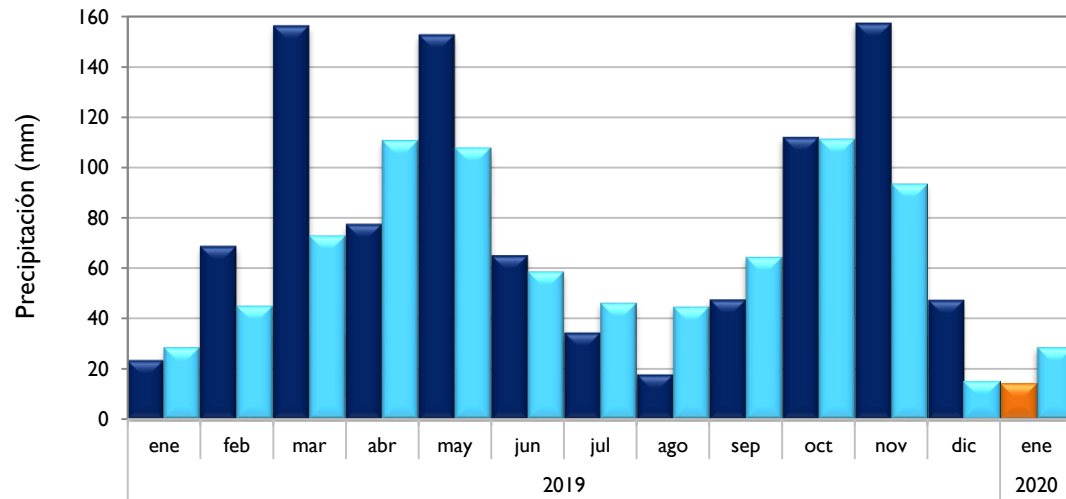
Riohacha - La Guajira



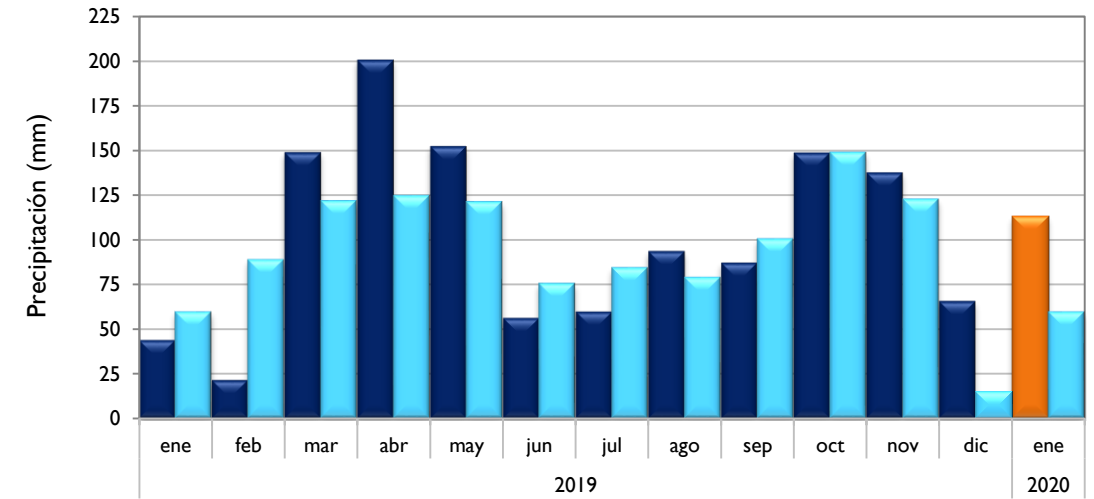
Rionegro - Antioquia



Aeropuerto El Dorado - Bogotá D. C.



Lebrija - Santander

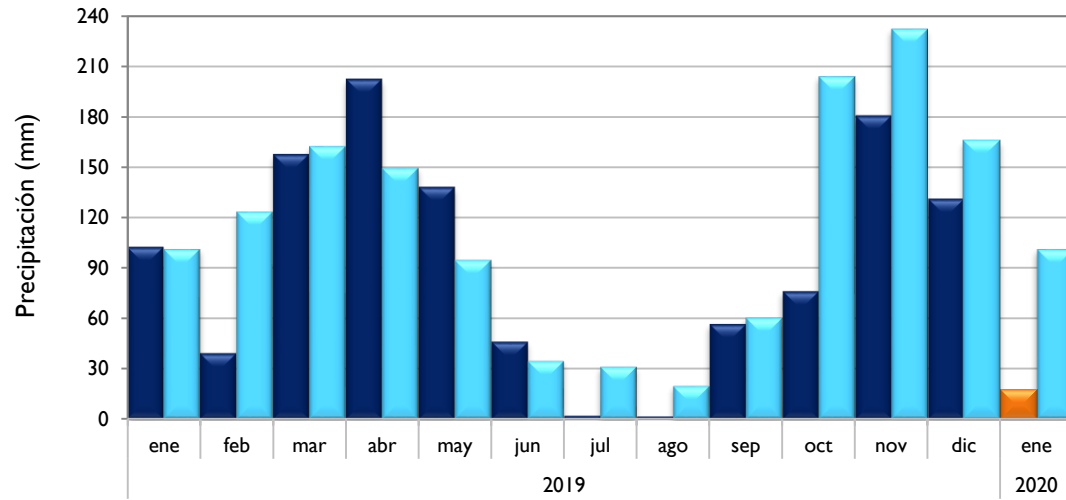


■ Observado 2018

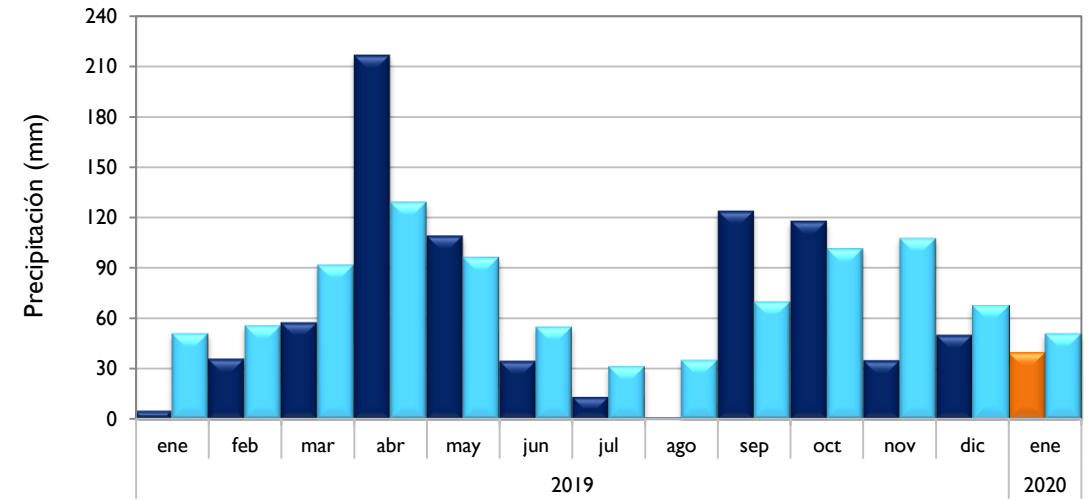
■ Observado 2020

■ Climatología

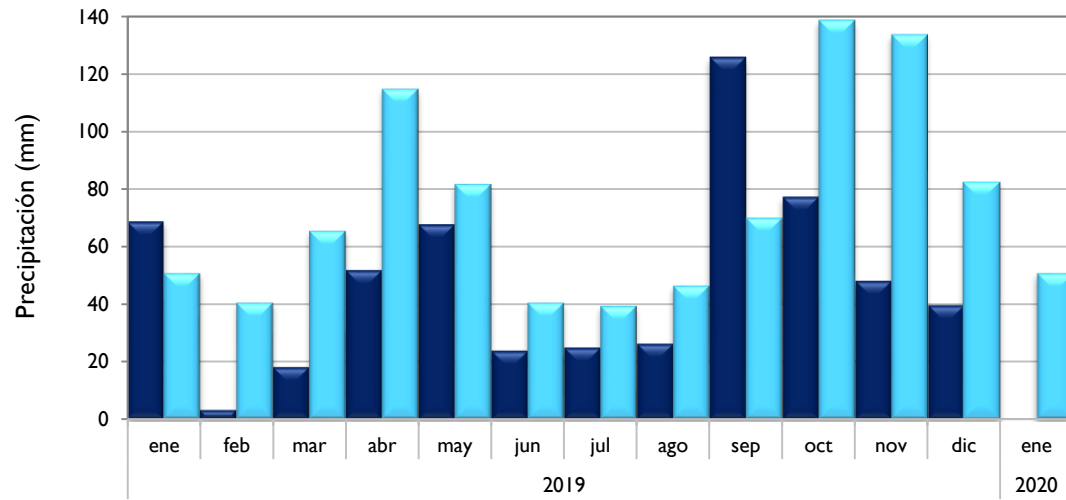
Neiva - Huila



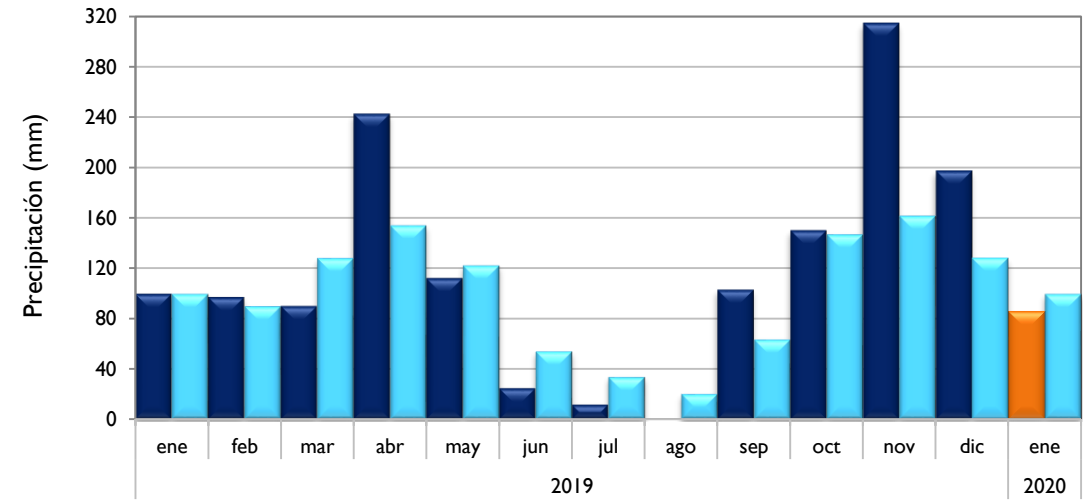
Palmira - Valle del Cauca



Cúcuta - Norte de Santander



Chachagüí - Nariño

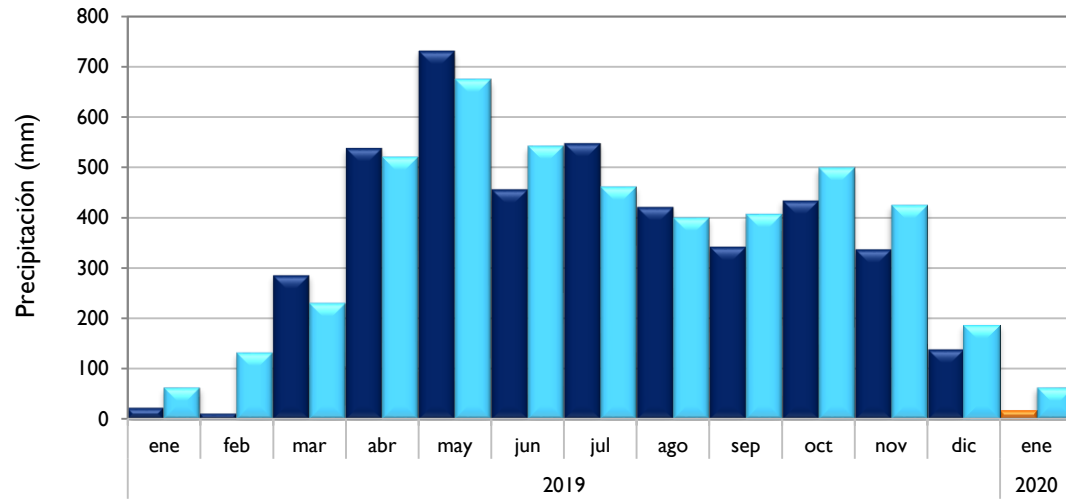


■ Observado 2018

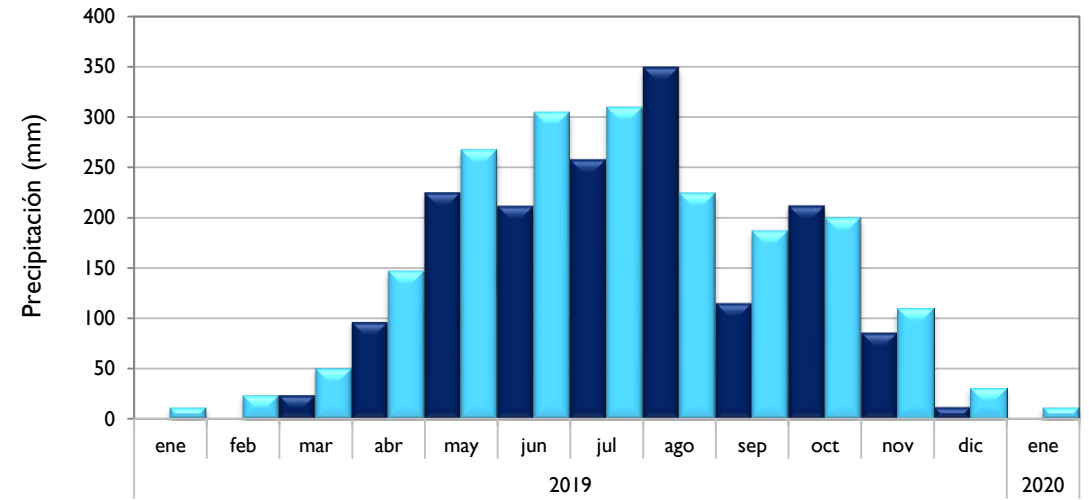
■ Observado 2020

■ Climatología

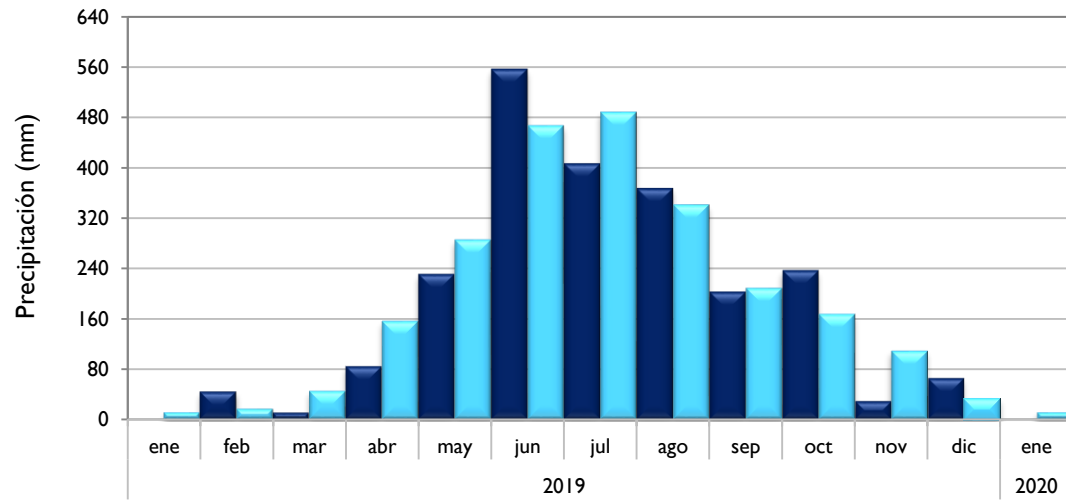
Villavicencio - Meta



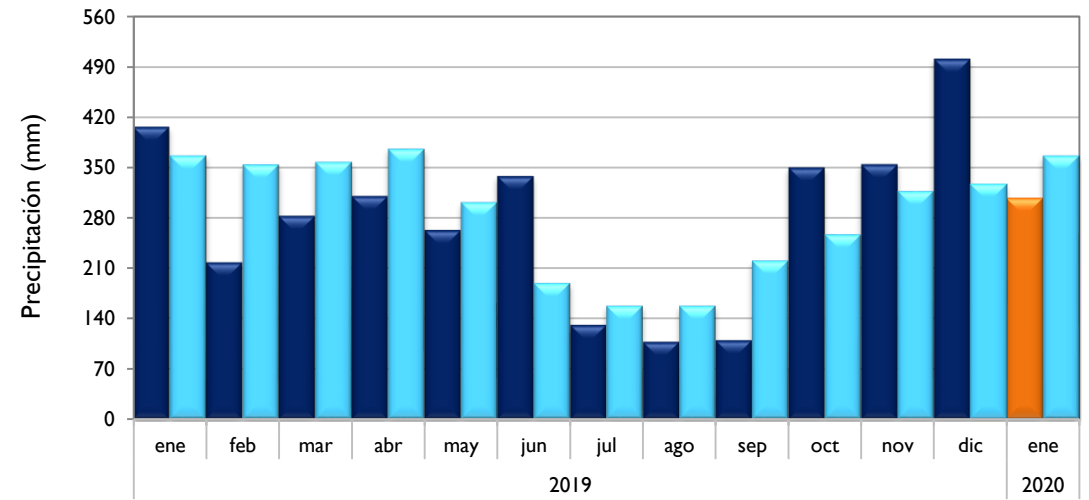
Arauca - Arauca



Puerto Carreño - Vichada



Leticia - Amazonas

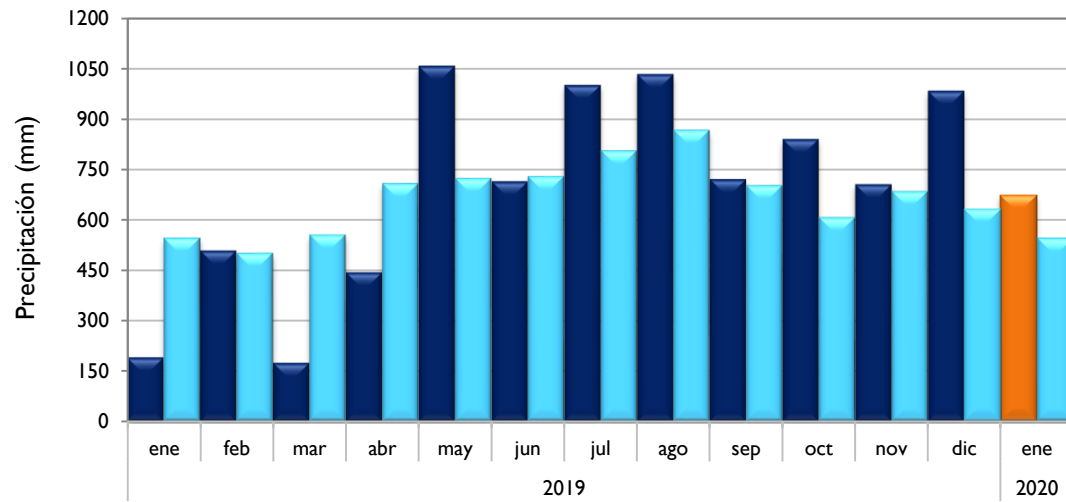


■ Observado 2018

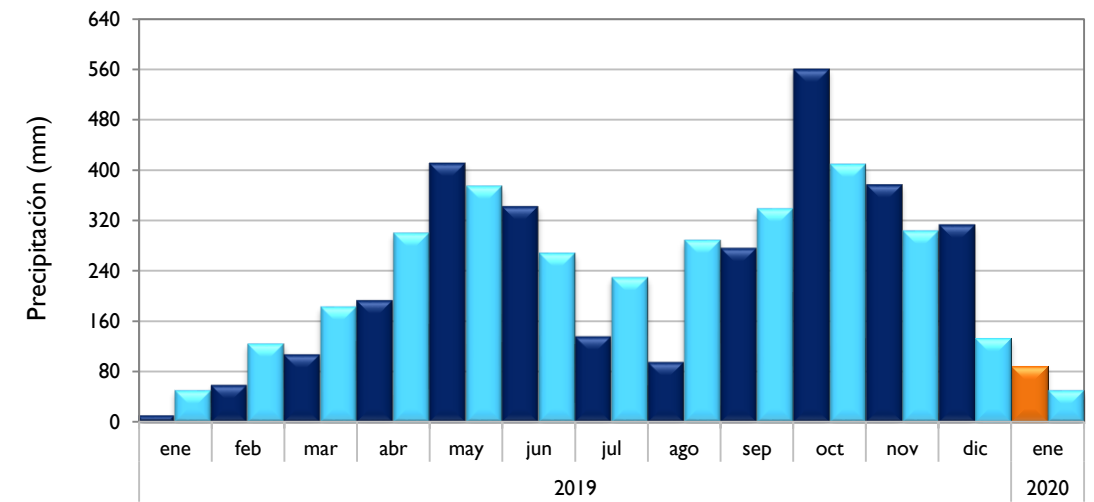
■ Observado 2020

■ Climatología

Quibdó - Chocó



Barrancabermeja - Santander



Armenia - Quindío

