

Diciembre
2020



Boletín Climatológico

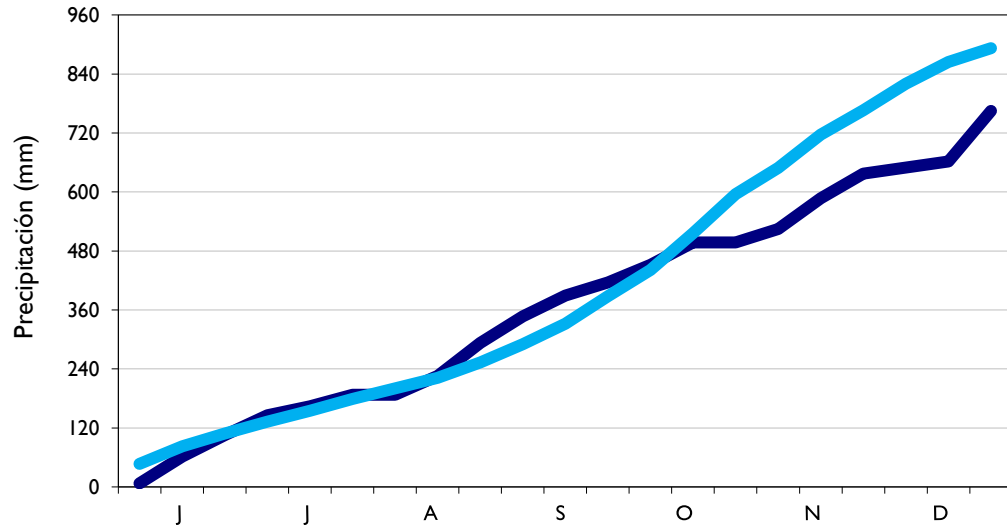
Seguimiento Decadal
de la Precipitación

 Estaciones de
Seguimiento

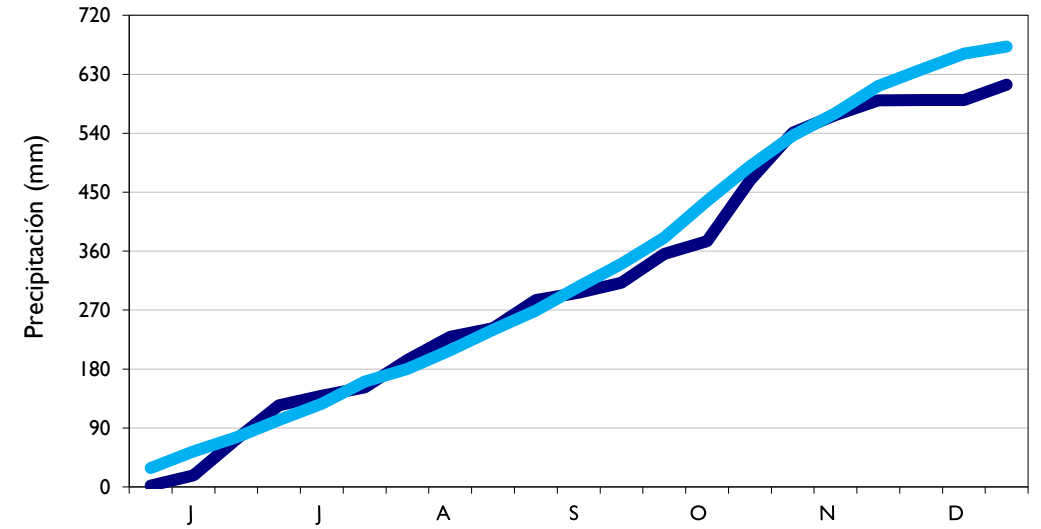
■ Observado

■ Climatología

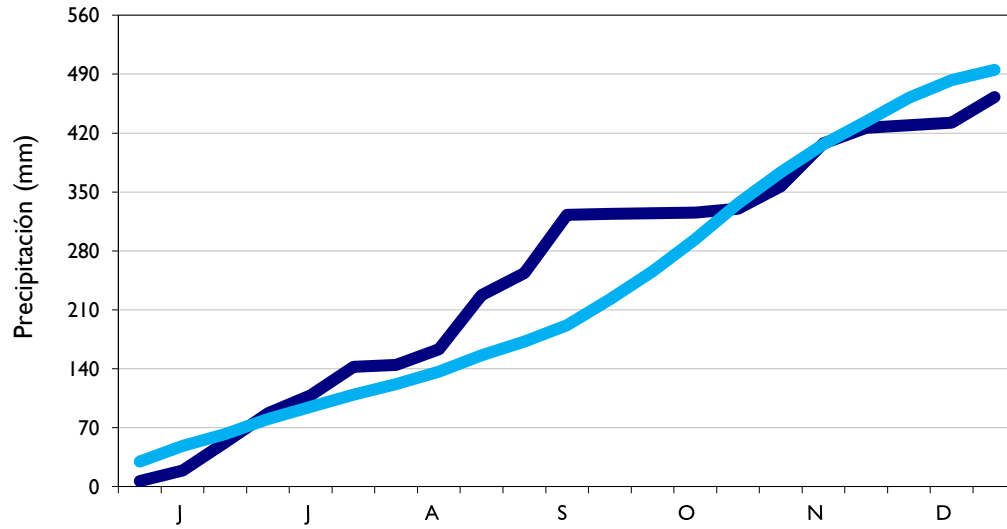
Manizales - Caldas



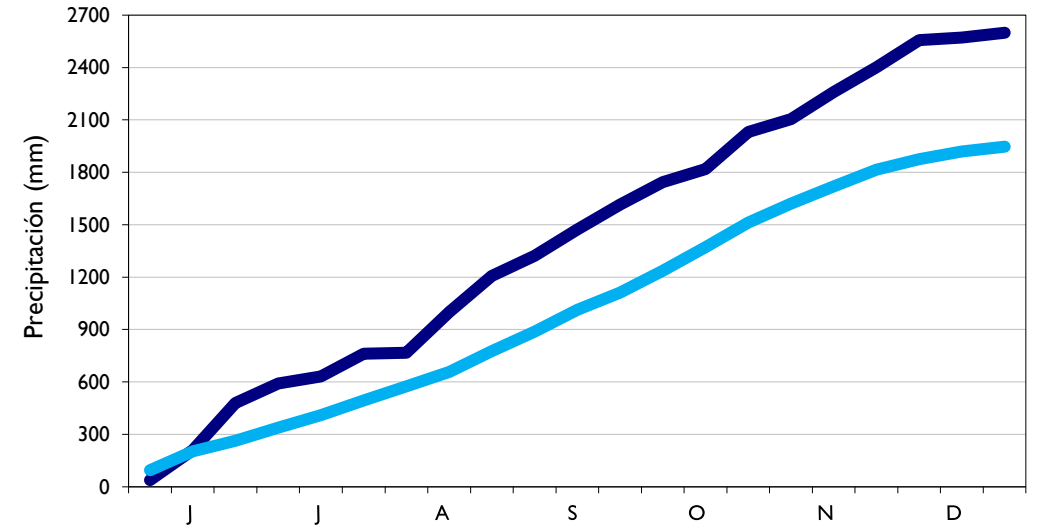
Lebrija - Santander



Aeropuerto El Dorado - Bogotá D.C.



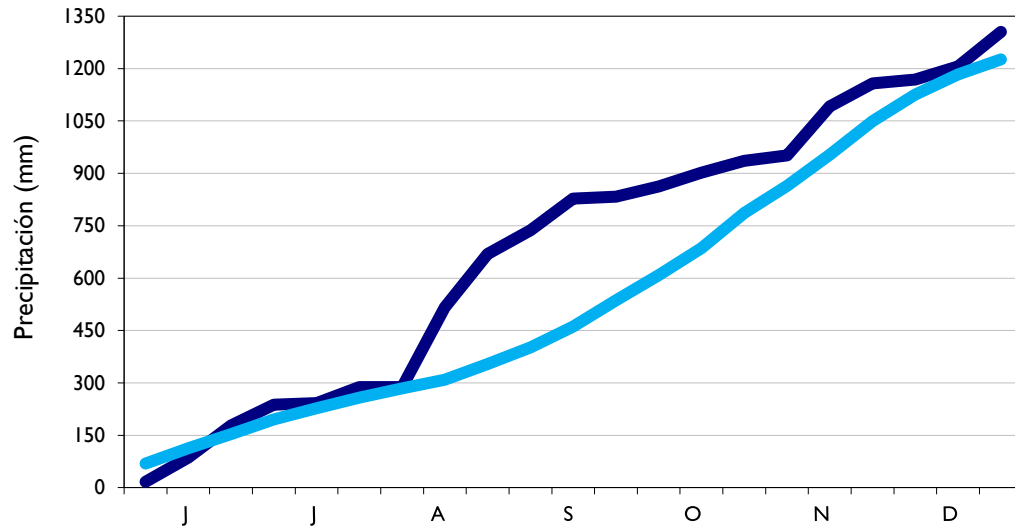
Barrancabermeja - Santander



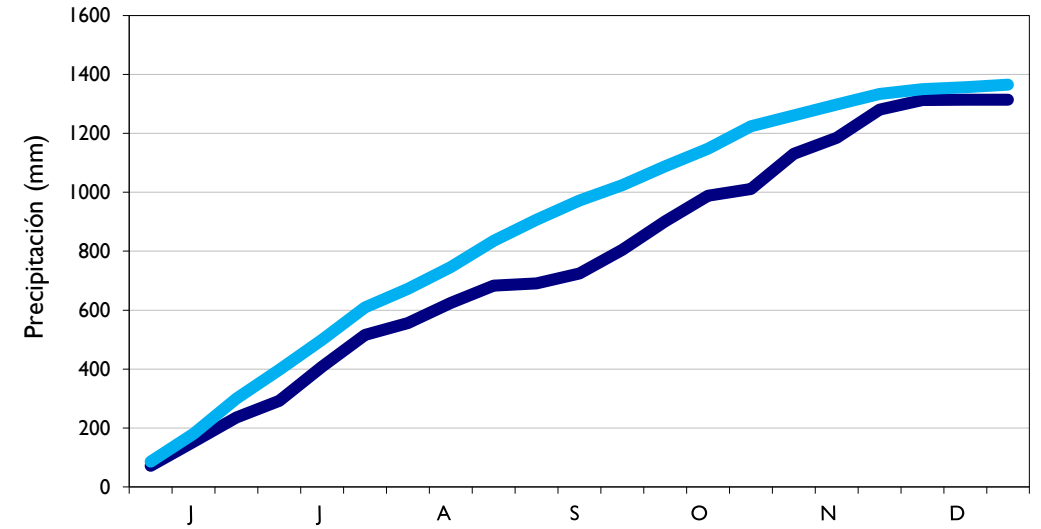
■ Observado

■ Climatología

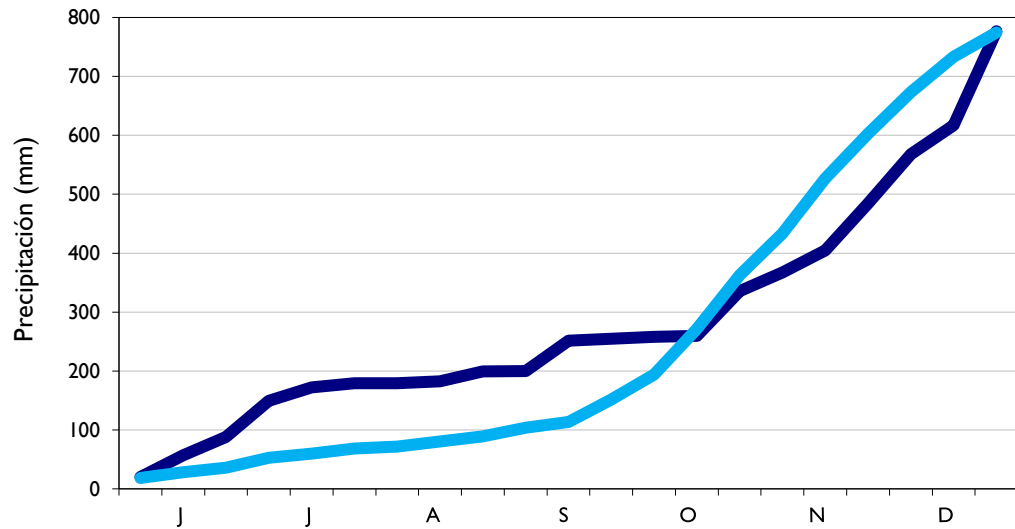
Armenia - Quindío



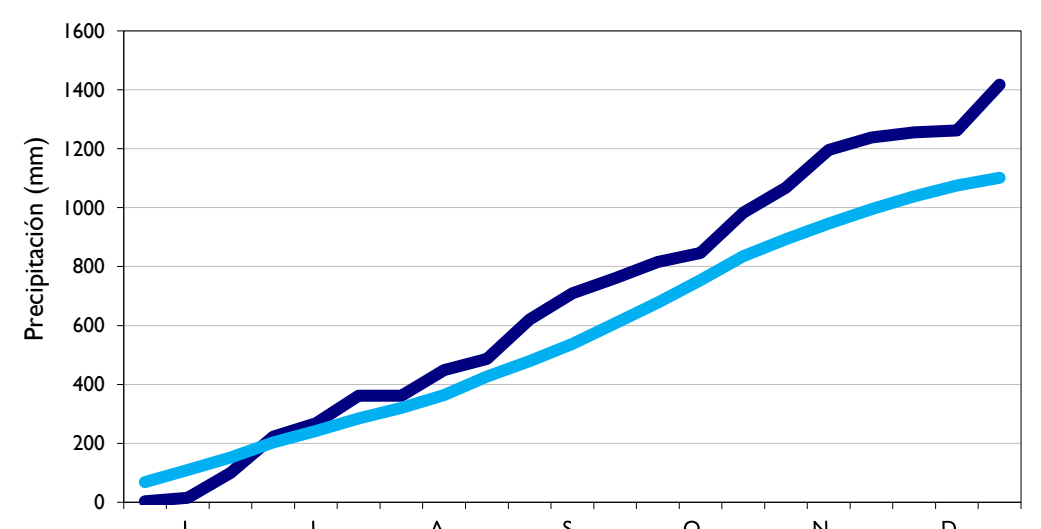
Arauca - Arauca



Neiva - Huila



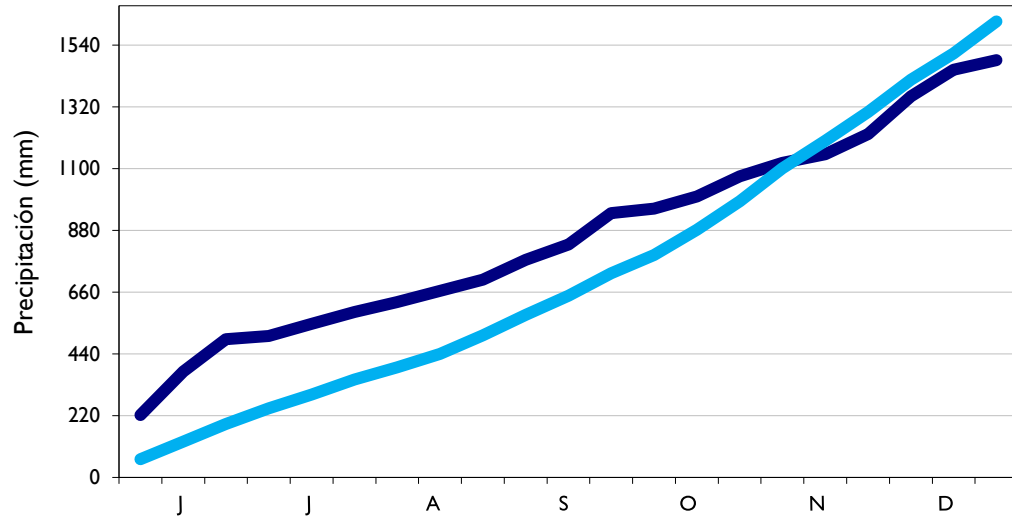
Medellín - Antioquia



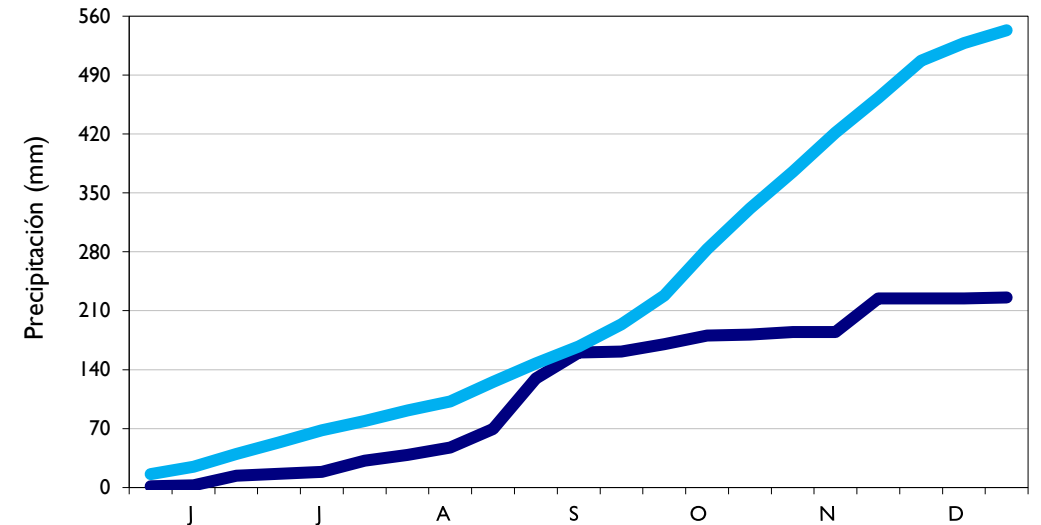
■ Observado

■ Climatología

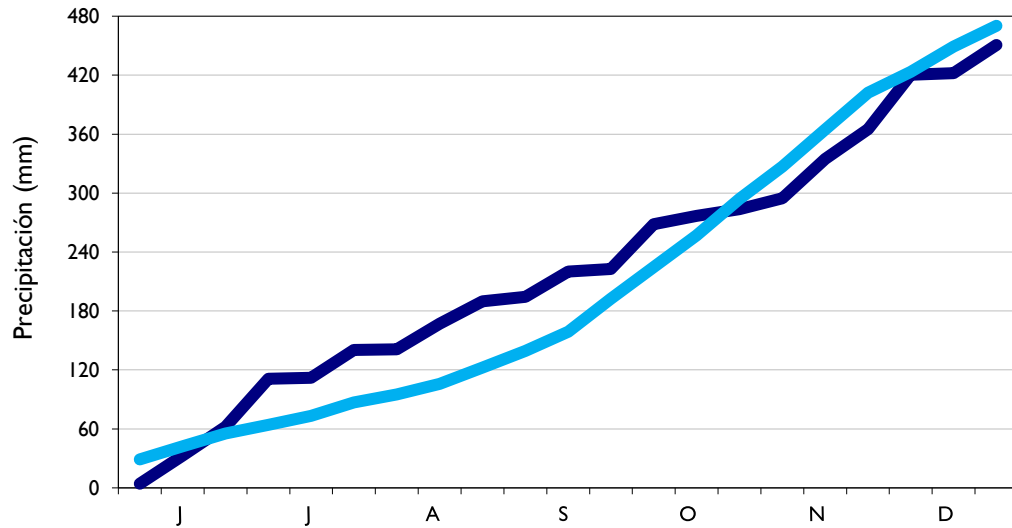
Leticia - Amazonas



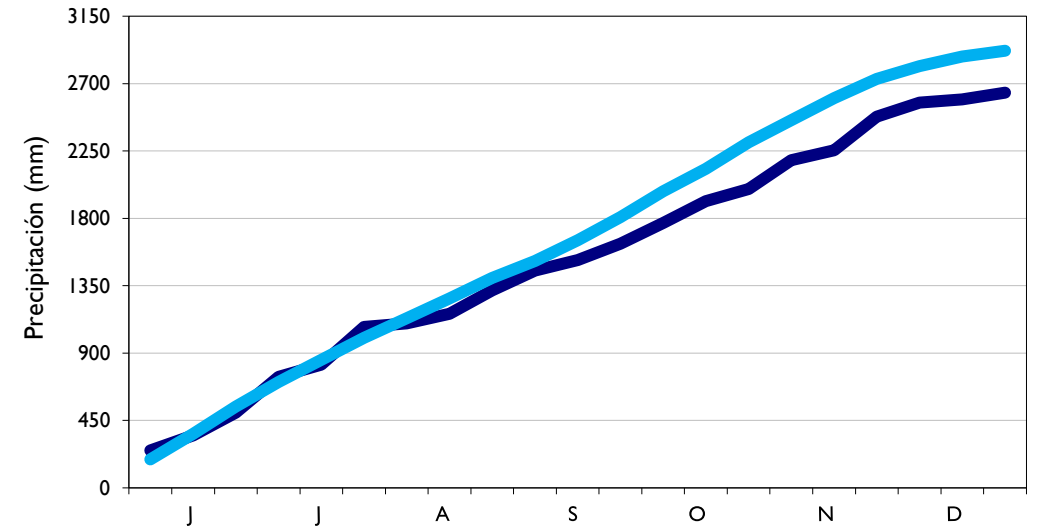
Cúcuta - Norte Santander



Palmira - Valle del Cauca



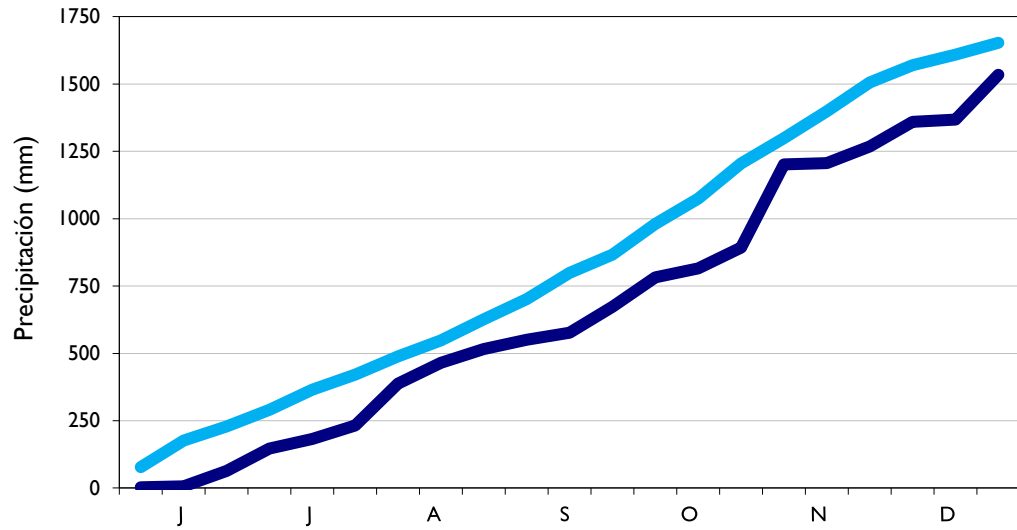
Villavicencio - Meta



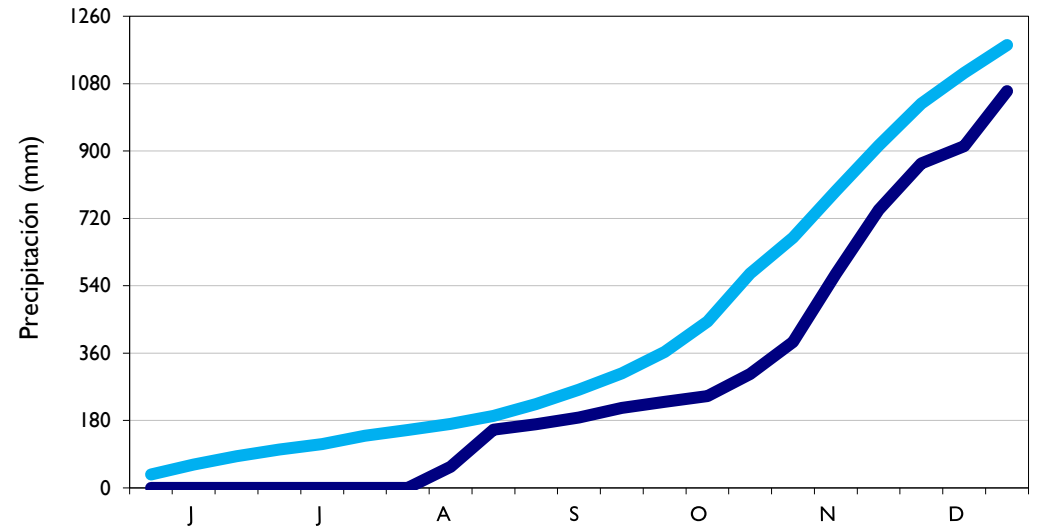
■ Observado

■ Climatología

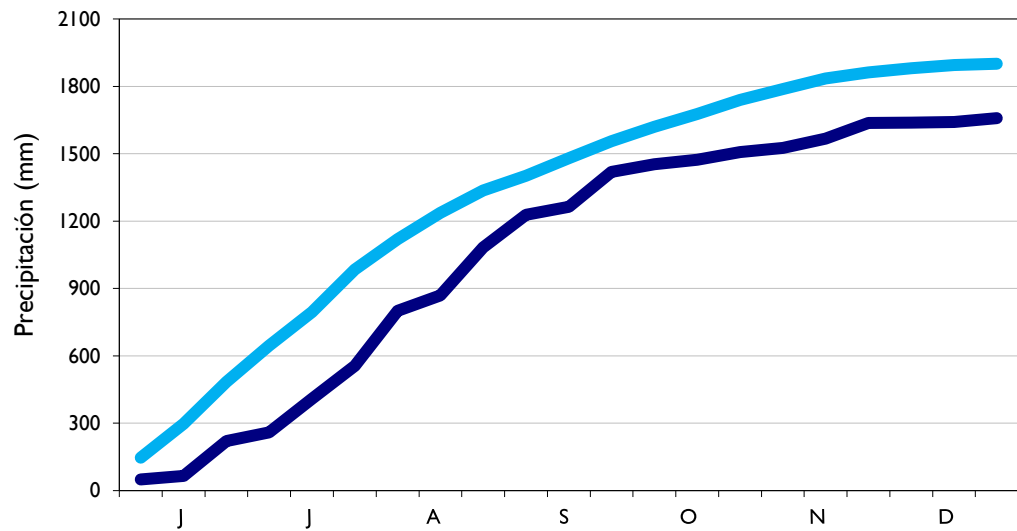
San Andrés - Archipiélago



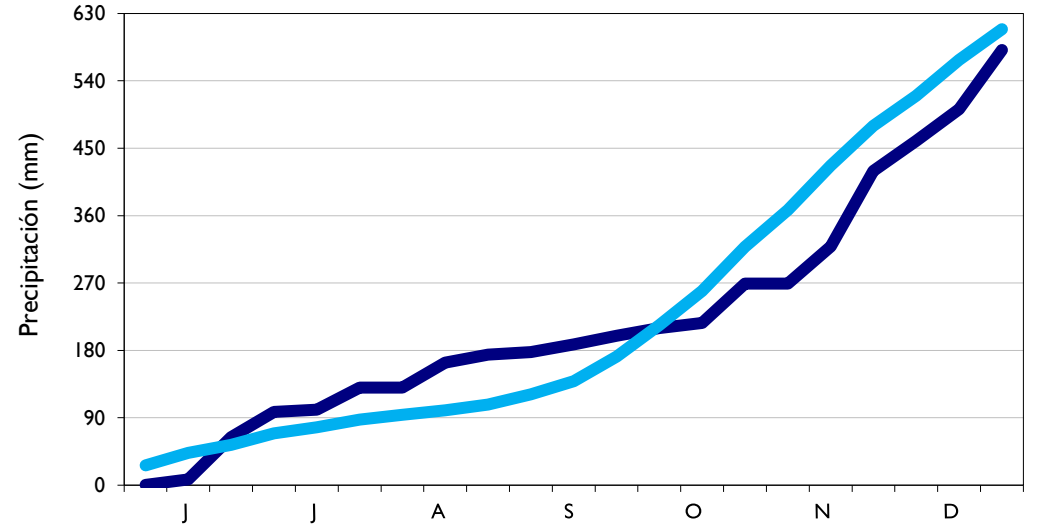
Popayán - Cauca



Puerto Carreño - Vichada



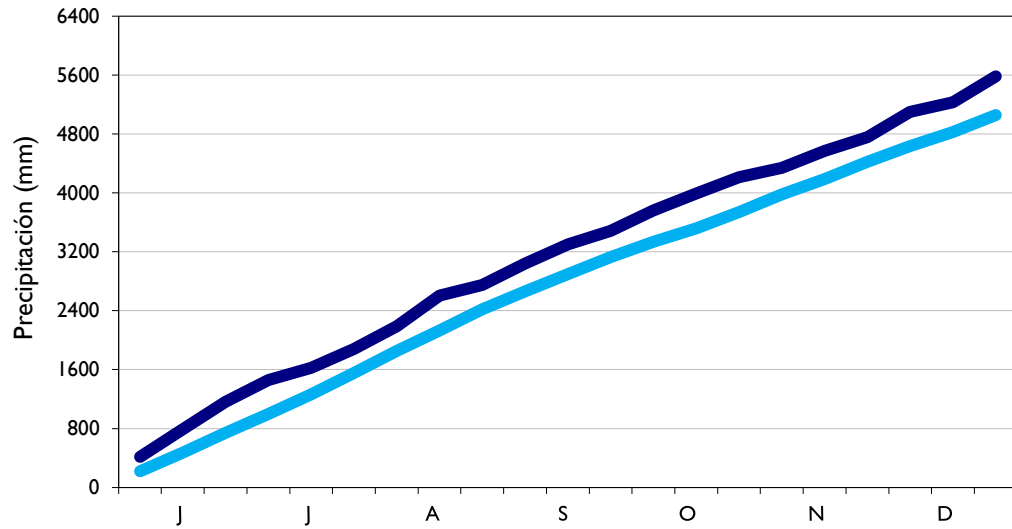
Chachagüí - Nariño



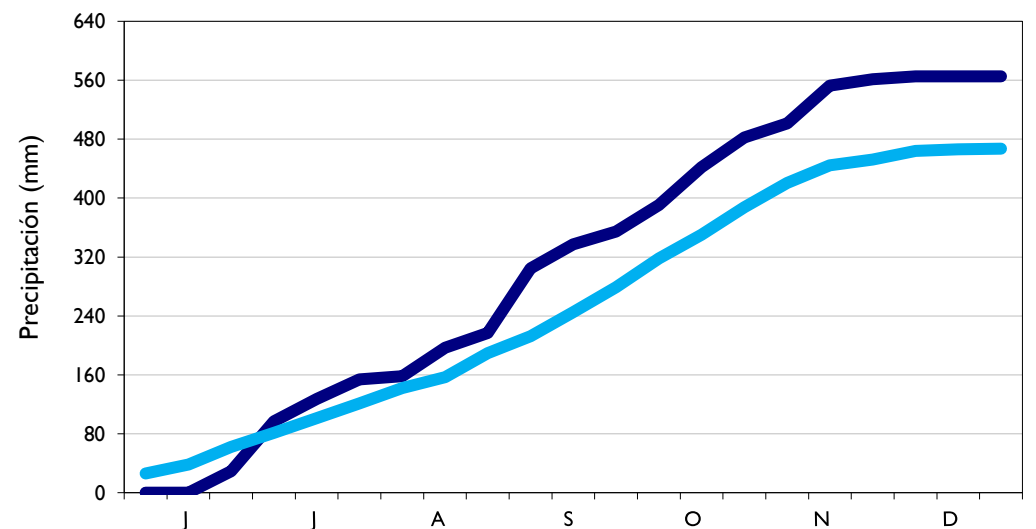
■ Observado

■ Climatología

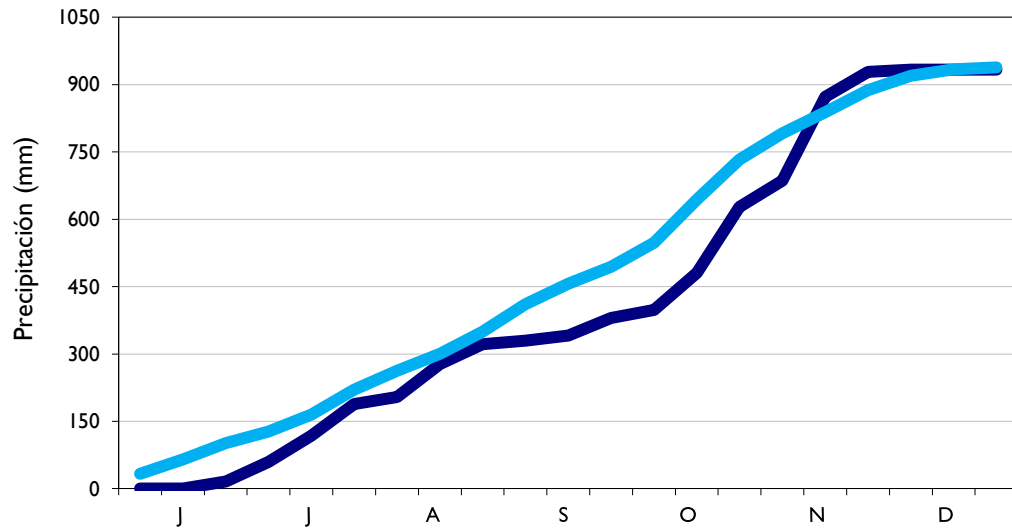
Quibdó - Chocó



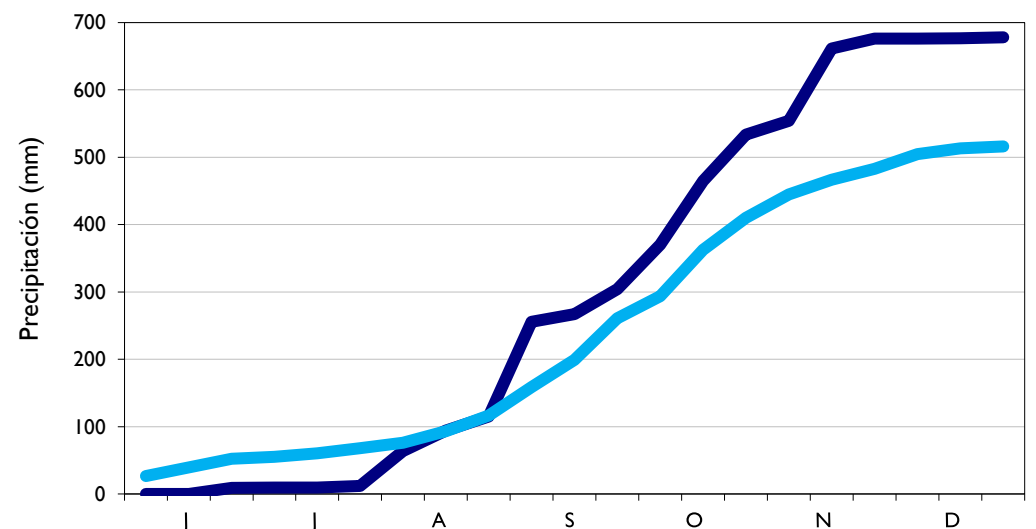
Santa Marta - Magdalena



Cartagena - Bolívar



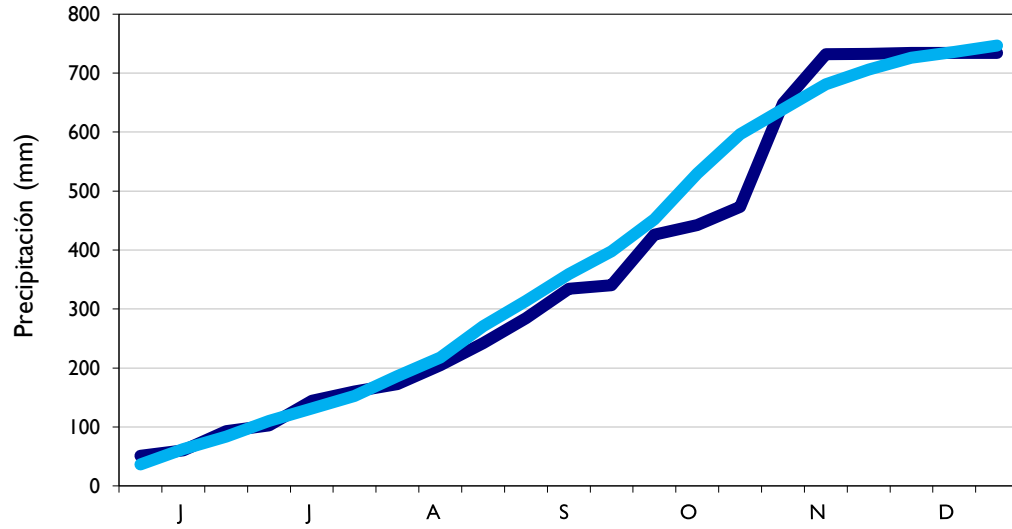
Riohacha - La Guajira



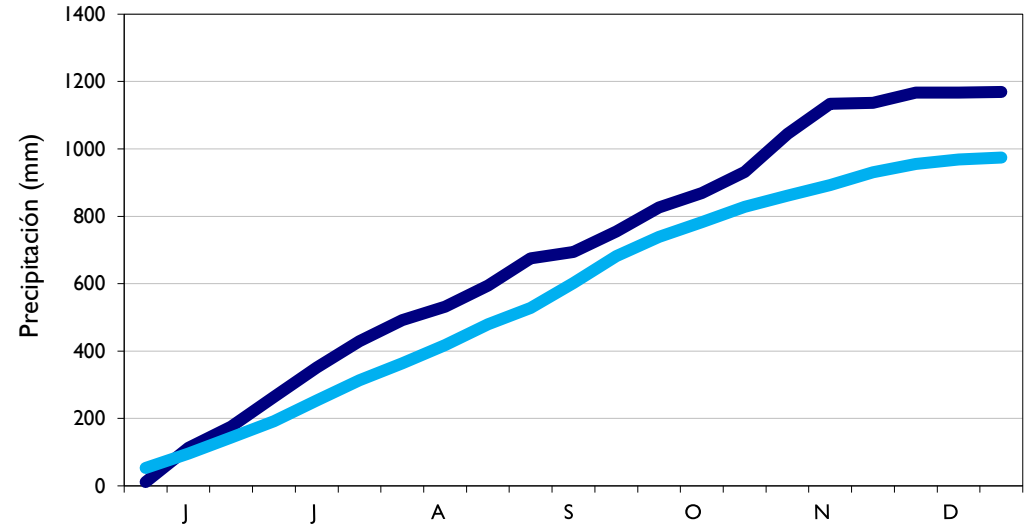
■ Observado

■ Climatología

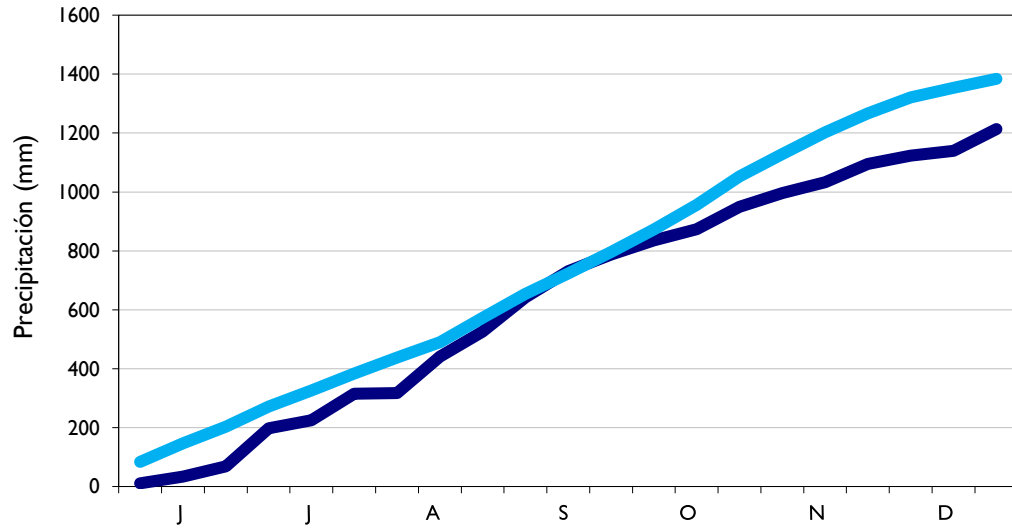
Valledupar - Cesar



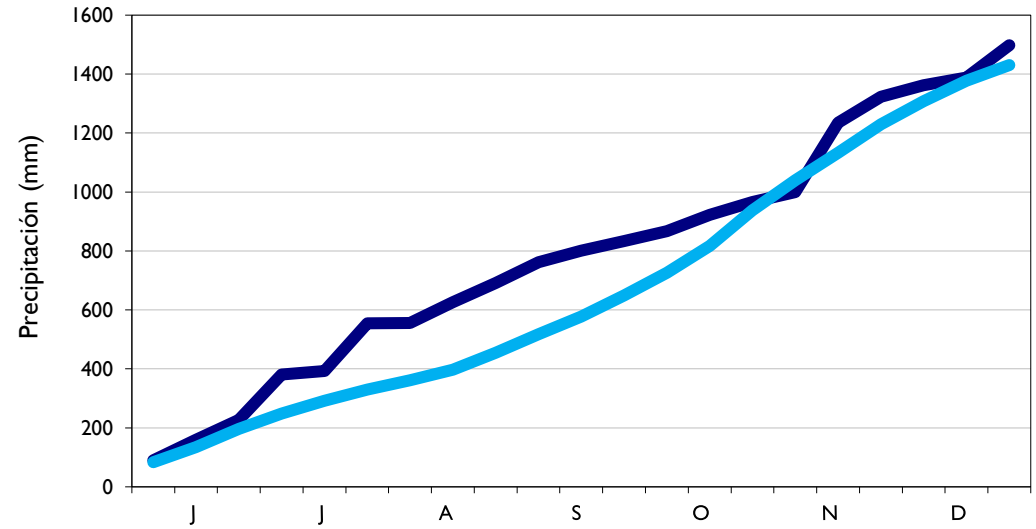
Montería - Córdoba



Rionegro - Antioquia



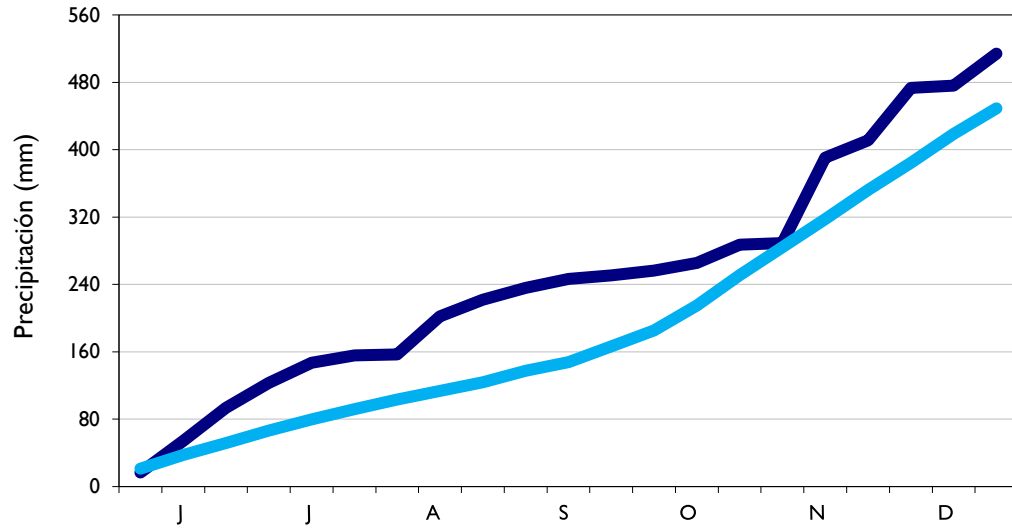
Pereira - Risaralda



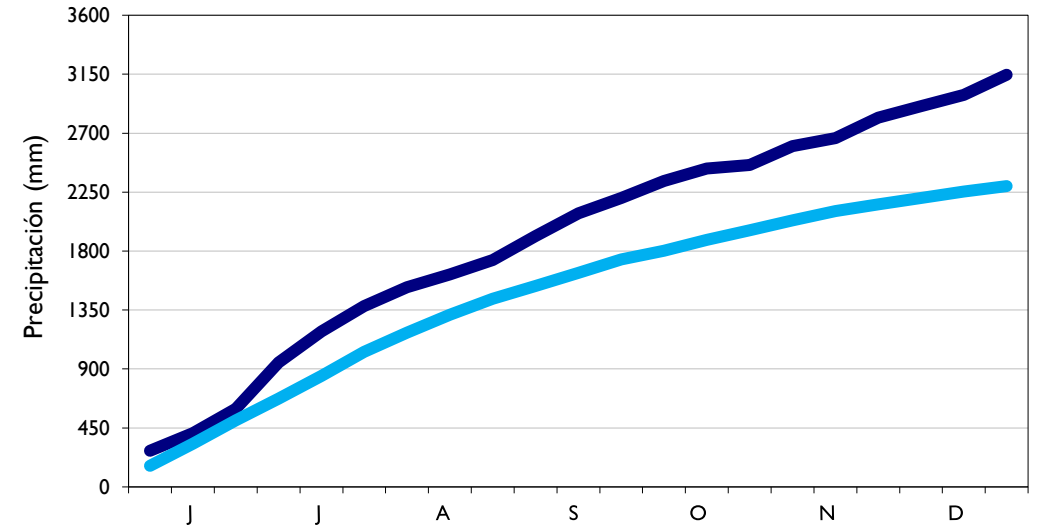
Observado

Climatología

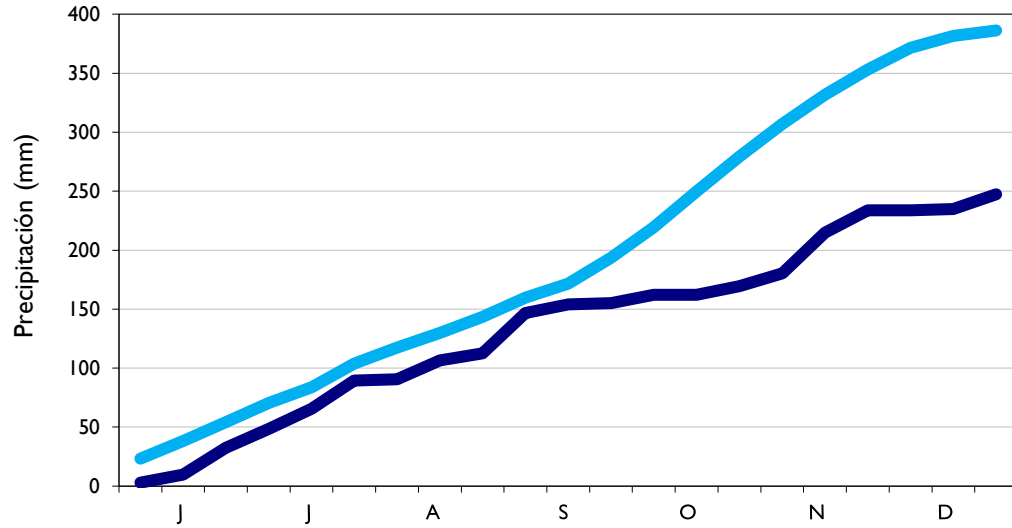
Aldana - Nariño



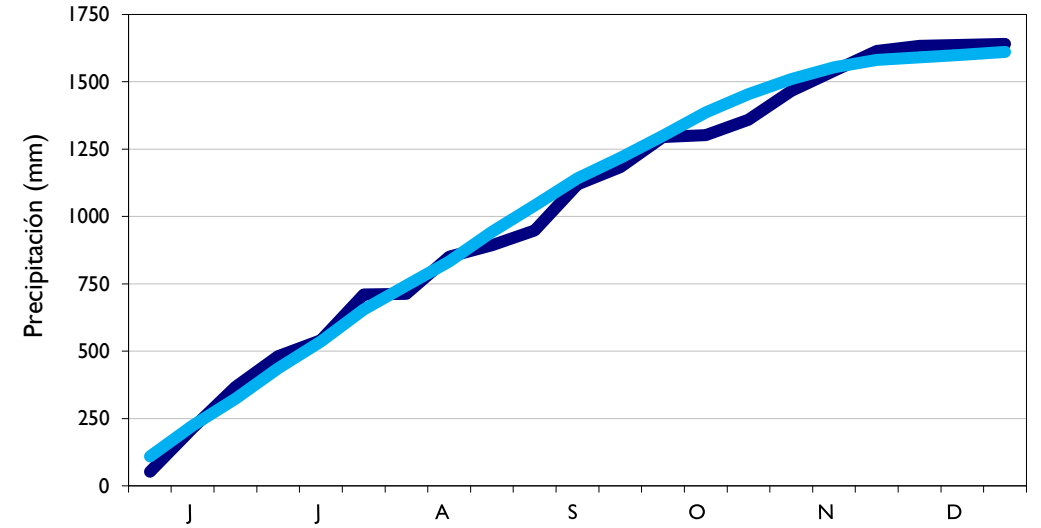
Inírida - Guainía



Tunja - Boyaca



Yopal - Casanare



■ Observado

■ Climatología

Jardín Botánico - Bogotá D. C.

